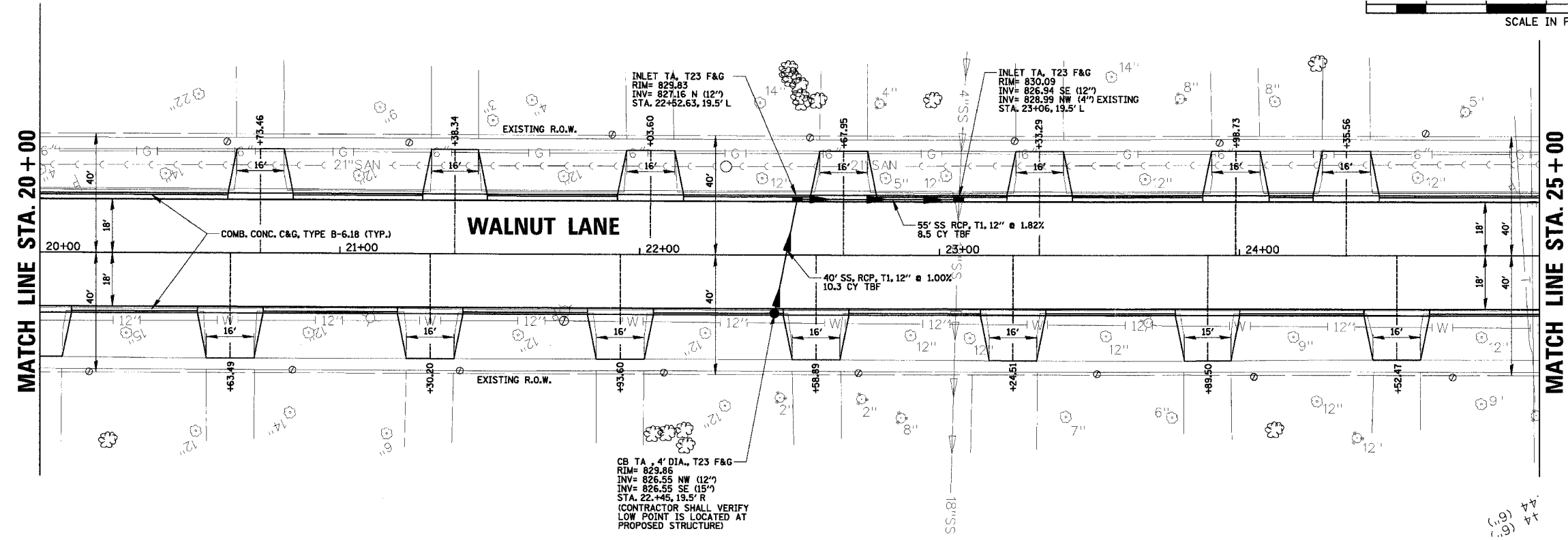
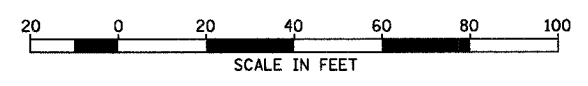
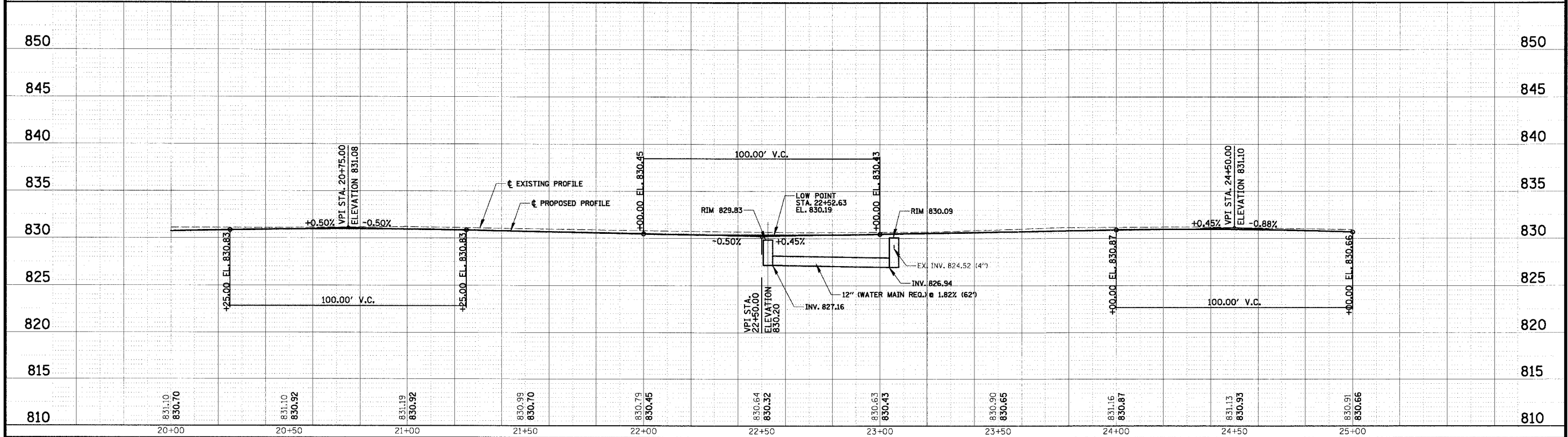


F.A.U. NO.	SECTION	COUNTY	TOTAL SHEETS	SHEET NO.
2556	00-00070-00-PP	COOK	98	20
FED. ROAD DIST. NO. 1		ILLINOIS	FED. AID PROJECT	
<b>CONTRACT No. 83799</b>				



NOTE:  
ALL DRIVEWAY ARE PCC DRIVEWAY  
PAVEMENT 7", EXCEPT AS NOTED.



**CHRISTOPHER B. BURKE ENGINEERING LTD.**  
9575 West Higgins Road, Suite 600  
Rosemont, Illinois 60018  
(847) 823-0500

CLIENT: **VILLAGE OF SCHAUMBURG**  
Engineering Department  
101 Schaumburg Court  
Schaumburg, IL. 60193-7806

NO.	DATE	NATURE OF REVISION	CHKD.
1	04/05/2005	DESIGN	GS
2		DWN.	GS
3		CHKD.	JCS
SCALE:		1" = 20' HOR.	
		1" = 5' VERT.	
FILE NAME	N:\SCHAUMBURG\01-434\DESIGN\PR_434_03.rpp		

TITLE: **WALNUT LANE PLAN AND PROFILE**  
**STA. 20+00 TO STA. 25+00**  
**C-91-108-04**

PROJECT NO. 01-434  
SHEET 20 OF 98  
DRAWING NO. **20**