

FOR INDEX OF SHEETS SEE SHEET NO. 2

STATE OF ILLINOIS
DEPARTMENT OF TRANSPORTATION
DIVISION OF HIGHWAYS

PLANS FOR PROPOSED FEDERAL AID HIGHWAY

F.A.U. ROUTE 1195(PINE STREET)

KIRK ROAD TO RADDANT ROAD

SECTION: 05-00064-00-RS

PROJECT NO. M-8003(480)

RESURFACING

KANE COUNTY

JOB NO: C-91-134-05

F.A.U. RTE.	SECTION	COUNTY	TOTAL SHEETS	SHEET NO.
1195	05-00064-00-RS	KANE	15	1

CONTRACT NUMBER 83795

TRAFFIC DATA

ADT (2005) = 4,800
POSTED SPEED 30 MPH
DESIGN SPEED 35 MPH

J.U.L.I.E.
JOINT UTILITY LOCATION FOR EXCAVATION
1-800-892-0123



CITY OF BATAVIA
APPROVED: 4/12 20 05
Thel A. By, P.E.
CITY ENGINEER

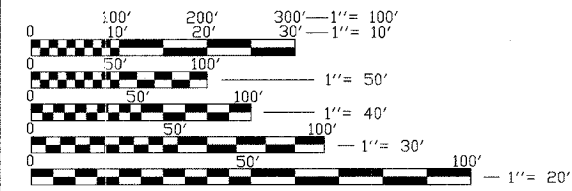
STATE OF ILLINOIS
DEPARTMENT OF TRANSPORTATION
PASSED: APRIL 14 20 05
[Signature]
BUREAU CHIEF OF LOCAL ROADS AND STREETS
APPROVED: APRIL 18 20 05
[Signature]
DISTRICT ENGINEER

PRINTED BY THE AUTHORITY
OF THE STATE OF ILLINOIS

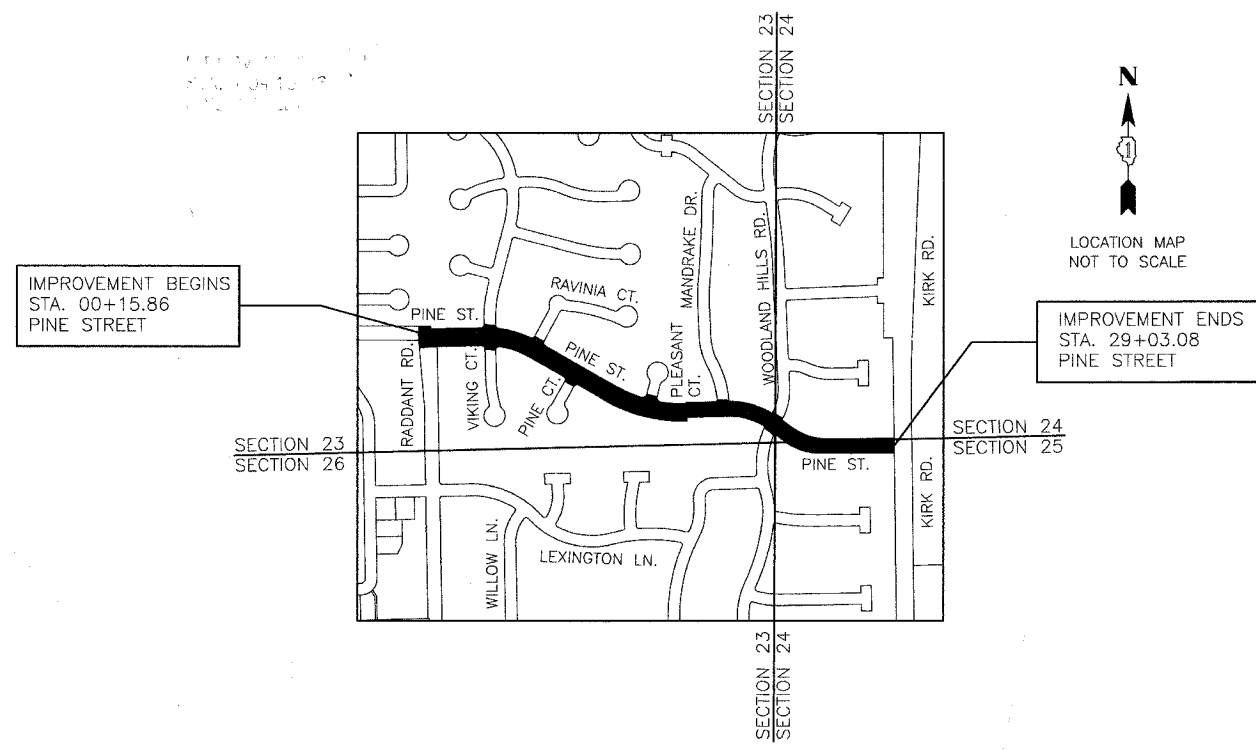


Karen R. Young, P.E.
REGISTERED P.E., STATE OF ILLINOIS
4/12/05
EXPIRATION DATE

FEDERAL AID DESIGN ENGINEER: CHAD RIDDLE, P.E. (847) 705-4406 SCHAUMBURG, IL
MUNICIPAL ENGINEER: KAREN R. YOUNG, P.E. CITY OF BATAVIA



FULL SIZE PLANS HAVE BEEN PREPARED USING STANDARD ENGINEERING SCALES. REDUCED SIZED PLANS WILL NOT CONFORM TO STANDARD SCALES. IN MAKING MEASUREMENTS ON REDUCED PLANS, THE ABOVE SCALES MAY BE USED.



LOCATION MAP
TOWNSHIP 39 NORTH, RANGE 8 EAST, BATAVIA TOWNSHIP
GROSS & NET PROJECT LENGTHS = 2,900 FT. OR 0.55 MILE

CONTRACT NO. 83795