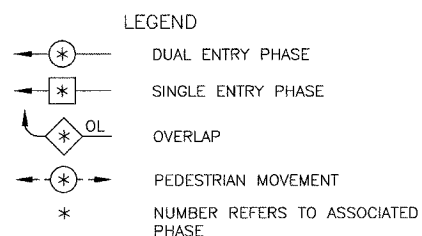
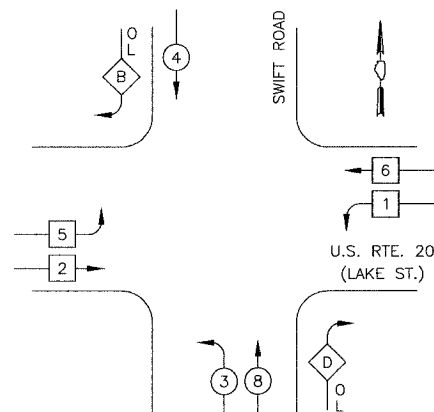


FAP. NO.	SECTION	COUNTY	TOTAL SHEETS	SHEET NO.
345	00-00086-00-TL	DUPAGE	58	31
STA.		TO STA.		
FED. ROAD DISTRICT	ILLINOIS	FED. AID PROJECT		
CONTRACT NO. 83794				

PROPOSED CONTROLLER SEQUENCE

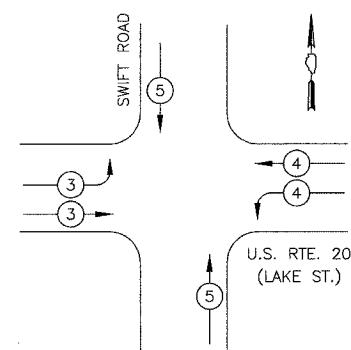


PHASE DESIGNATION DIAGRAM

RIGHT TURN OVERLAP PHASE DESIGNATION

OVERLAP LETTER	PERMISSIVE PHASE	PROTECTED PHASE
B	= 4	+ 5
D	= 8	+ 1

EXISTING AND PROPOSED EMERGENCY VEHICLE PREEMPTION SEQUENCE



PROPOSED EMERGENCY VEHICLE PREEMPTORS			
EMERGENCY VEHICLE PREEMPTOR	3	4	5
MOVEMENT			

TRAFFIC SIGNAL SCHEDULE OF QUANTITIES

DESCRIPTION	UNIT	QNTY.
RELOCATE SIGN PANEL - TYPE 1	SQ FT	39
GROUNDING EXISTING HANDHOLE FRAME AND COVER	EACH	1
CONDUIT IN TRENCH, 2" DIA., GALVANIZED STEEL	FOOT	29
CONDUIT IN TRENCH, 2 1/2" DIA., GALVANIZED STEEL	FOOT	332
CONDUIT IN TRENCH, 4" DIA., GALVANIZED STEEL	FOOT	47
CONDUIT IN TRENCH, 5" DIA., GALVANIZED STEEL	FOOT	10
CONDUIT PUSHED, 2" DIA., GALVANIZED STEEL	FOOT	73
CONDUIT PUSHED, 4" DIA., GALVANIZED STEEL	FOOT	364
HANDHOLE	EACH	2
HEAVY-DUTY HANDHOLE	EACH	1
DOUBLE HANDHOLE	EACH	2
TRENCH AND BACKFILL FOR ELECTRICAL WORK	FOOT	371
ELECTRIC CABLE IN CONDUIT, SIGNAL, NO. 14 3C	FOOT	632
ELECTRIC CABLE IN CONDUIT, SIGNAL, NO. 14 5C	FOOT	3064
ELECTRIC CABLE IN CONDUIT, SIGNAL, NO. 14 7C	FOOT	829
ELECTRIC CABLE IN CONDUIT, LEAD-IN, NO. 14 1 PAIR	FOOT	4561
ELECTRIC CABLE IN CONDUIT, SERVICE NO. 6 2C	FOOT	37
STEEL MAST ARM ASSEMBLY AND POLE, 50 FT.	EACH	1
CONCRETE FOUNDATION, TYPE A	FOOT	8
CONCRETE FOUNDATION, TYPE D	FOOT	4
CONCRETE FOUNDATION, TYPE E 36-INCH DIAMETER	FOOT	15
CONCRETE FOUNDATION, TYPE E 36-INCH DIAMETER (SPECIAL)	FOOT	15
DRILL EXISTING HANDHOLE	EACH	1
INDUCTIVE LOOP DETECTOR	EACH	2
DETECTOR LOOP, TYPE I	FOOT	971
TEMPORARY TRAFFIC SIGNAL INSTALLATION	EACH	1
RELOCATE EXISTING TRAFFIC SIGNAL POST	EACH	2
RELOCATE EXISTING MAST ARM ASSEMBLY AND POLE	EACH	1
RELOCATE EXISTING EMERGENCY VEHICLE PRIORITY SYSTEM, DETECTOR UNIT	EACH	2
MODIFY EXISTING CONTROLLER	EACH	1
REMOVE EXISTING TRAFFIC SIGNAL EQUIPMENT	EACH	1
REMOVE EXISTING HANDHOLE	EACH	4
REMOVE EXISTING CONCRETE FOUNDATION	EACH	5
SERVICE INSTALLATION, POLE MOUNT	EACH	1
ELECTRIC CABLE IN CONDUIT, GROUNDING, NO. 6 1C	FOOT	587
ELECTRIC CABLE IN CONDUIT, NO. 20 3C, TWISTED, SHIELDED	FOOT	632
SIGNAL HEAD, L.E.D., 1-FACE, 3-SECTION, MAST ARM MOUNTED	EACH	7
SIGNAL HEAD, L.E.D., 1-FACE, 5-SECTION, MAST ARM MOUNTED	EACH	3
SIGNAL HEAD, L.E.D., 2-FACE, 3-SECTION, BRACKET MOUNTED	EACH	2
SIGNAL HEAD, L.E.D., 2-FACE, 5-SECTION, BRACKET MOUNTED	EACH	1
SIGNAL HEAD, L.E.D., 2-FACE, 1-3 SECTION, 1-5 SECTION, BRACKET MOUNTED	EACH	1
RELOCATE EXISTING TRAFFIC SIGNAL CONTROLLER AND CABINET, COMPLETE	EACH	1

THE TRAFFIC SIGNAL CONTROL EQUIPMENT FOR THIS PROJECT SHALL BE "ECONOLITE" BRAND TO MATCH THE EXISTING ADJACENT SYSTEM.

REVISIONS	
NAME	DATE

VILLAGE OF ADDISON
TRAFFIC SIGNAL SEQUENCES AND SCHEDULE OF QUANTITIES
 U.S. RTE. 20 (LAKE ST.) & SWIFT ROAD

SCALE: NOT TO SCALE
 DATE: 4/1/2005

DRAWN BY: BRD
 DESIGNED BY: BRD
 CHECKED BY: KMM