

FED. AID DISTRICT	SECTION	COUNTY	TOTAL SHEETS	SHEET NO.
345	00-00066-00-TL	DUPAGE	58	21
STA. 133+00		TO STA. 138+25		
FED. ROAD DISTRICT		FED. AID PROJECT		
CONTRACT NO. 83794				

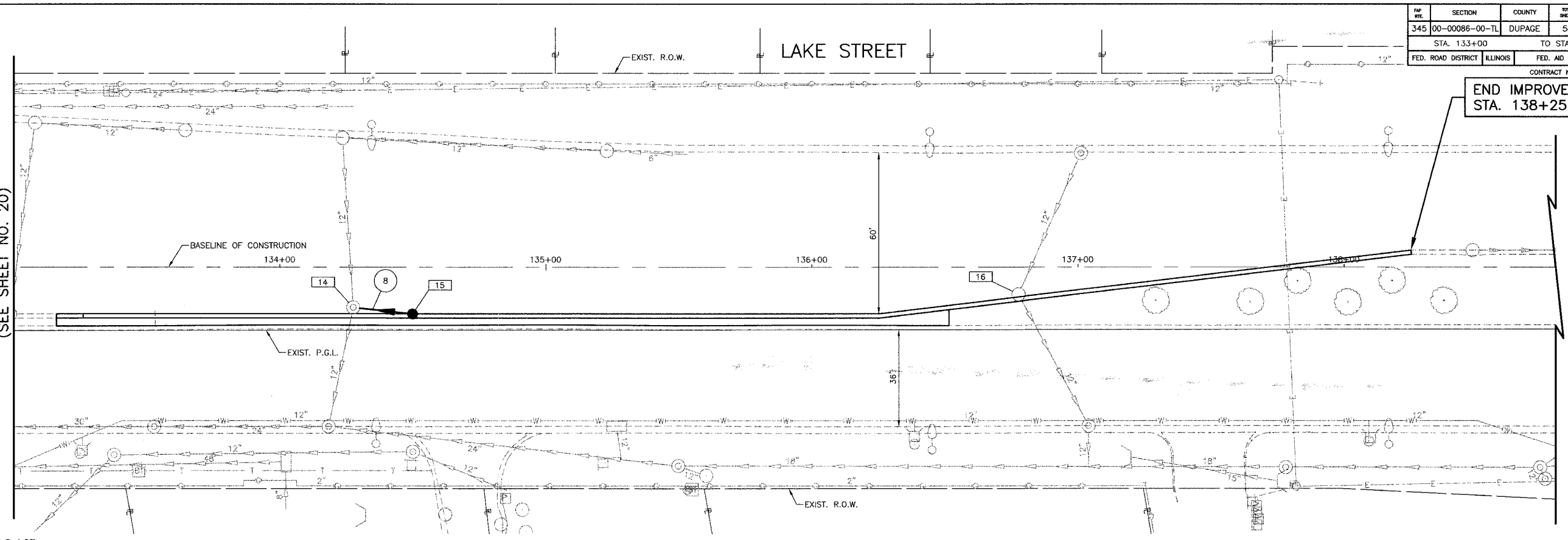
14 STA. 134+28, 15' RT.
EXISTING MH
EX. RIM = 735.49
EX. INV = 728.94 (N.)
EX. INV = 728.44 (S.)
PR. INV = 731.97 (E.)
ADJUST WITH NEW
TYPE 1 FR., C.L.
PR. RIM = 734.97

15 STA. 134+50, 17.50' RT.
CB T-C
TYPE 23 F & G
RIM = 735.16
INV = 732.16 (W.)

16 STA. 136+78, 11.22' RT.
EXISTING CB
EX. RIM = 739.93
EX. INV = 734.72 (NE.)
EX. INV = 734.48 (SE.)
ADJUST WITH NEW
TYPE 23 F & G

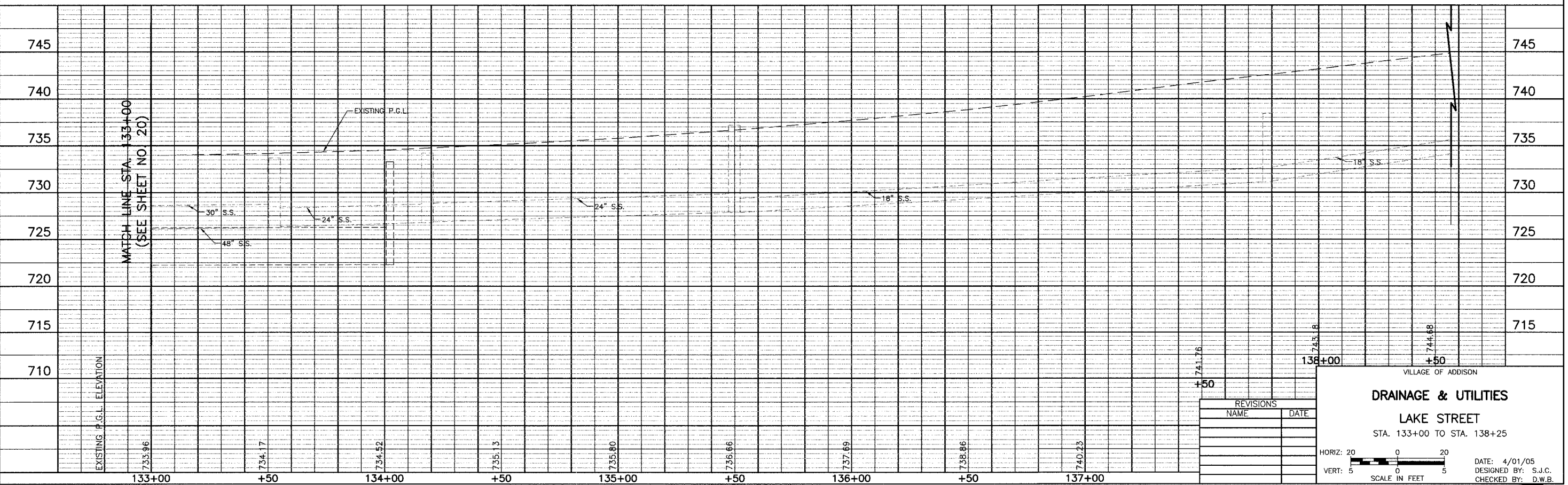
8 19" - 12" SS., CL. A, T-1 @ 1.0%
T.B.F. = 0.9 CU. YD.

MATCH LINE STA. 133+00
(SEE SHEET NO. 20)



END IMPROVEMENT
STA. 138+25

R = REMOVE STRUCTURE
ADJ = ADJUST



REVISIONS	
NAME	DATE

VILLAGE OF ADDISON

DRAINAGE & UTILITIES

LAKE STREET

STA. 133+00 TO STA. 138+25

HORIZ: 20 0 20
VERT: 5 0 5
SCALE IN FEET

DATE: 4/01/05
DESIGNED BY: S.J.C.
CHECKED BY: D.W.B.