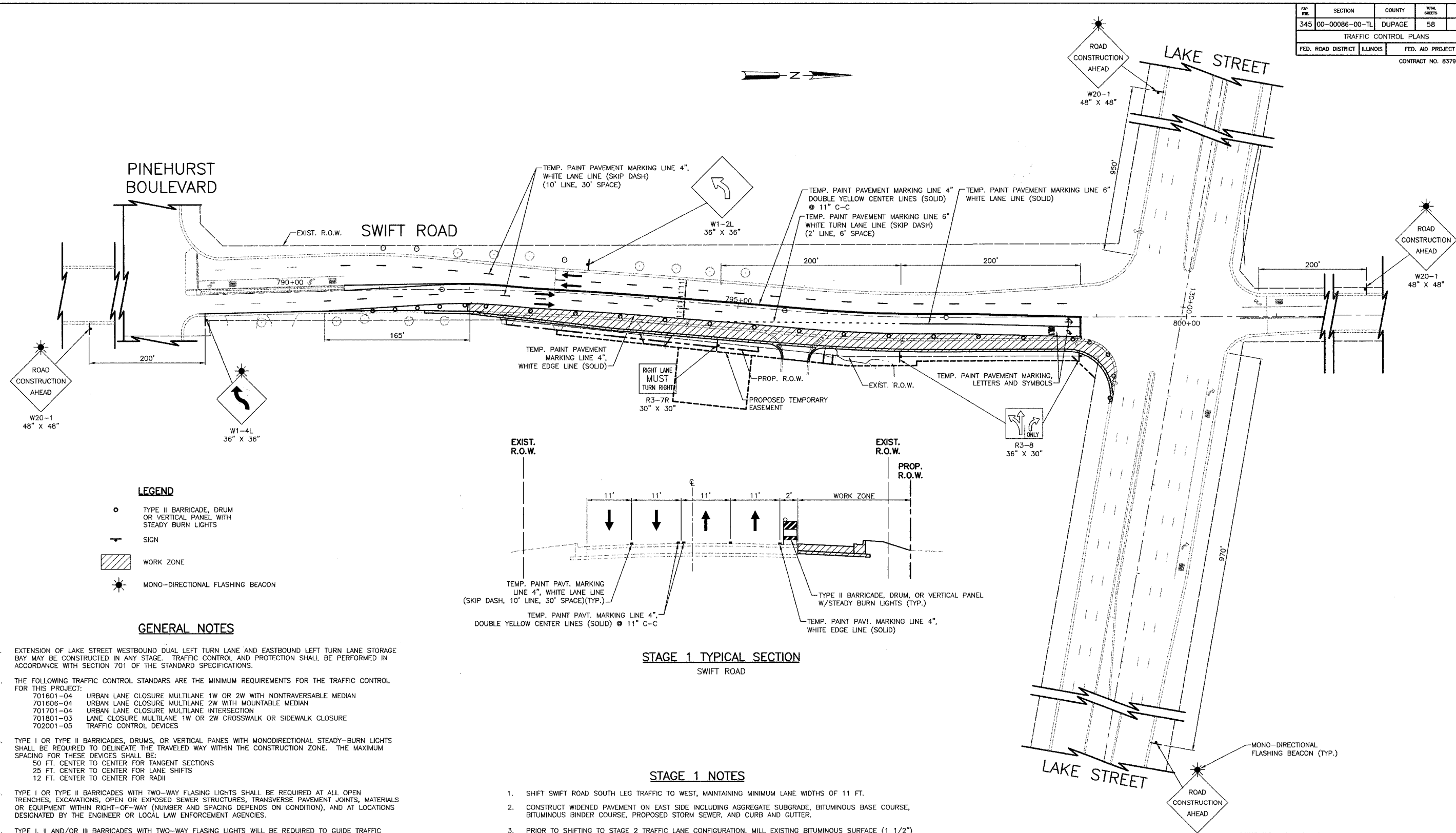


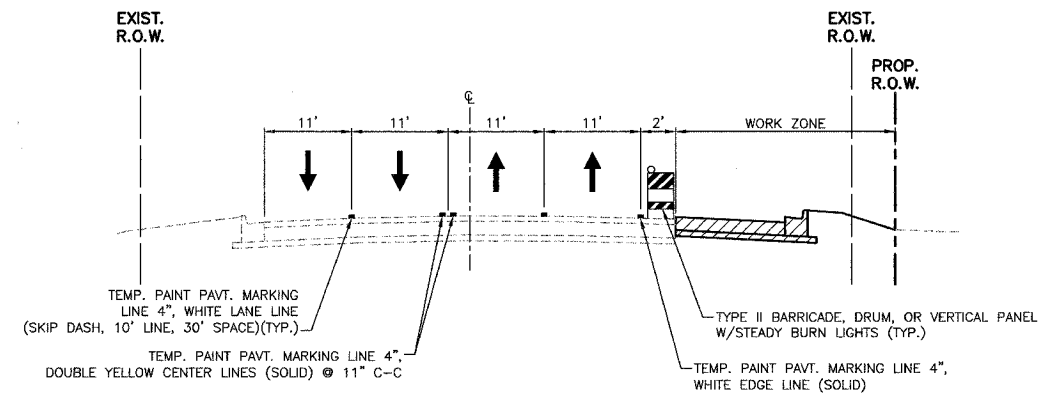
DP NO.	SECTION	COUNTY	TOTAL SHEETS	SHEET NO.
345	00-00086-00-TL	DUPAGE	58	10
TRAFFIC CONTROL PLANS				
FED. ROAD DISTRICT		ILLINOIS	FED. AID PROJECT	
CONTRACT NO. 83794				



- LEGEND**
- TYPE II BARRICADE, DRUM OR VERTICAL PANEL WITH STEADY BURN LIGHTS
 - SIGN
 - ▨ WORK ZONE
 - ★ MONO-DIRECTIONAL FLASHING BEACON

GENERAL NOTES

- EXTENSION OF LAKE STREET WESTBOUND DUAL LEFT TURN LANE AND EASTBOUND LEFT TURN LANE STORAGE BAY MAY BE CONSTRUCTED IN ANY STAGE. TRAFFIC CONTROL AND PROTECTION SHALL BE PERFORMED IN ACCORDANCE WITH SECTION 701 OF THE STANDARD SPECIFICATIONS.
- THE FOLLOWING TRAFFIC CONTROL STANDARDS ARE THE MINIMUM REQUIREMENTS FOR THE TRAFFIC CONTROL FOR THIS PROJECT:
 - 701801-04 URBAN LANE CLOSURE MULTILANE 1W OR 2W WITH NONTRAVERSABLE MEDIAN
 - 701806-04 URBAN LANE CLOSURE MULTILANE 2W WITH MOUNTABLE MEDIAN
 - 701701-04 URBAN LANE CLOSURE MULTILANE INTERSECTION
 - 701801-03 LANE CLOSURE MULTILANE 1W OR 2W CROSSWALK OR SIDEWALK CLOSURE
 - 702001-05 TRAFFIC CONTROL DEVICES
- TYPE I OR TYPE II BARRICADES, DRUMS, OR VERTICAL PANES WITH MONODIRECTIONAL STEADY-BURN LIGHTS SHALL BE REQUIRED TO DELINEATE THE TRAVELED WAY WITHIN THE CONSTRUCTION ZONE. THE MAXIMUM SPACING FOR THESE DEVICES SHALL BE:
 - 50 FT. CENTER TO CENTER FOR TANGENT SECTIONS
 - 25 FT. CENTER TO CENTER FOR LANE SHIFTS
 - 12 FT. CENTER TO CENTER FOR RADII
- TYPE I OR TYPE II BARRICADES WITH TWO-WAY FLASHING LIGHTS SHALL BE REQUIRED AT ALL OPEN TRENCHES, EXCAVATIONS, OPEN OR EXPOSED SEWER STRUCTURES, TRANSVERSE PAVEMENT JOINTS, MATERIALS OR EQUIPMENT WITHIN RIGHT-OF-WAY (NUMBER AND SPACING DEPENDS ON CONDITION), AND AT LOCATIONS DESIGNATED BY THE ENGINEER OR LOCAL LAW ENFORCEMENT AGENCIES.
- TYPE I, II AND/OR III BARRICADES WITH TWO-WAY FLASHING LIGHTS WILL BE REQUIRED TO GUIDE TRAFFIC AWAY FROM PAVEMENT AREAS CLOSED FOR CONSTRUCTION.
- THE COST OF SUPPLYING, ERECTING, AND MAINTAINING BARRICADES, WARNING LIGHTS, AND SIGNS WILL BE INCLUDED IN THE CONTRACT LUMP SUM PRICE FOR TRAFFIC CONTROL AND PROTECTION.
- PLACE DRIVEWAY ENTRANCE SIGNS (WHITE LETTERS ON GREEN SIGN) AT COMMERCIAL AND RESIDENTIAL ENTRANCES THROUGHOUT THE PROJECT DURING EACH STAGE OF CONSTRUCTION. THIS SHALL BE INCLUDED IN THE CONTRACT LUMP SUM PRICE FOR TRAFFIC CONTROL AND PROTECTION.
- IT IS ANTICIPATED THAT NORTHBOUND AND SOUTHBOUND TRAFFIC MAY AT TIMES NEED TO BE REDUCED TO A SINGLE LANE IN ORDER TO CONSTRUCT EACH STAGE. THE DAILY LANE CLOSURES SHALL BE IN ACCORDANCE WITH TRAFFIC CONTROL STANDARDS AS LISTED IN ITEM NUMBER 2 IN THESE TRAFFIC CONTROL GENERAL NOTES.



STAGE 1 TYPICAL SECTION
SWIFT ROAD

STAGE 1 NOTES

- SHIFT SWIFT ROAD SOUTH LEG TRAFFIC TO WEST, MAINTAINING MINIMUM LANE WIDTHS OF 11 FT.
- CONSTRUCT WIDENED PAVEMENT ON EAST SIDE INCLUDING AGGREGATE SUBGRADE, BITUMINOUS BASE COURSE, BITUMINOUS BINDER COURSE, PROPOSED STORM SEWER, AND CURB AND GUTTER.
- PRIOR TO SHIFTING TO STAGE 2 TRAFFIC LANE CONFIGURATION, MILL EXISTING BITUMINOUS SURFACE (1 1/2") 22 FT. LEFT OF PROPOSED WIDENING AND PAVE LEVEL BINDER AND BITUMINOUS BINDER COURSE.

REVISIONS	
NAME	DATE

VILLAGE OF ADDISON
TRAFFIC CONTROL PLANS
STAGE 1
LAKE STREET/SWIFT ROAD

SCALE IN FEET

DATE: 4/01/05
DESIGNED BY: S.J.C.
CHECKED BY: D.W.B.