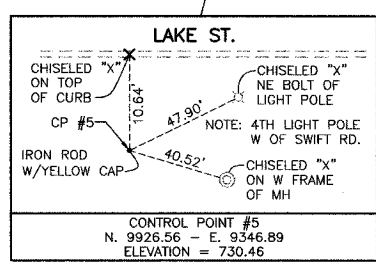
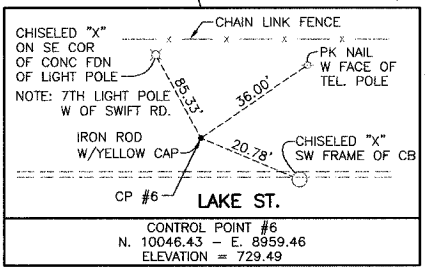
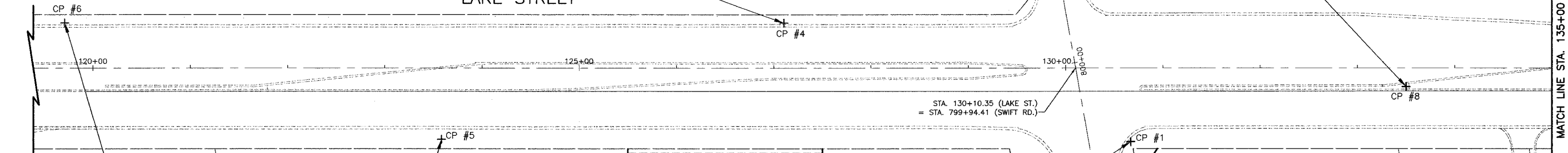
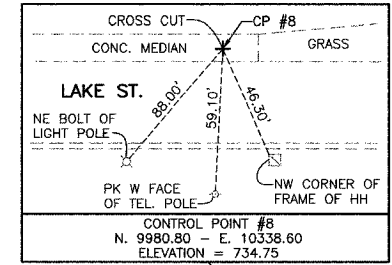
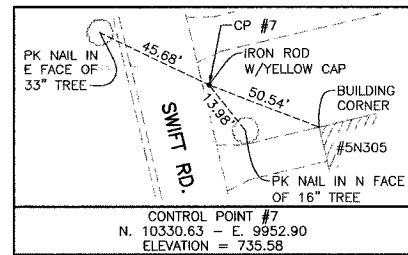
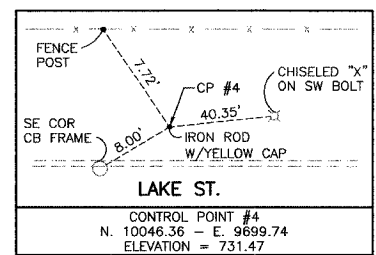


PROP. NO.	SECTION	COUNTY	TOTAL SHEETS	SHEET NO.
345	00-00086-00-TL	DUPAGE	58	9
ALIGNMENT, TIES AND BENCHMARKS				
FED. ROAD DISTRICT	ILLINOIS	FED. AID PROJECT	CONTRACT NO. 83794	

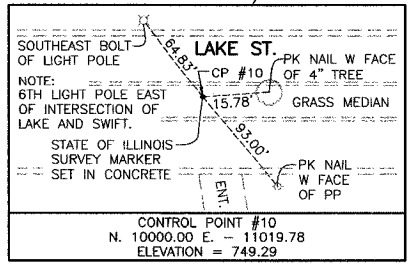
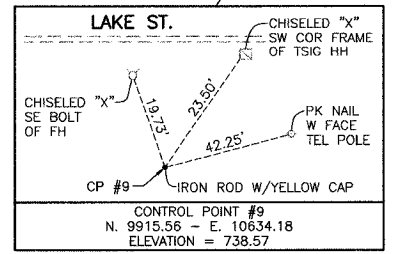
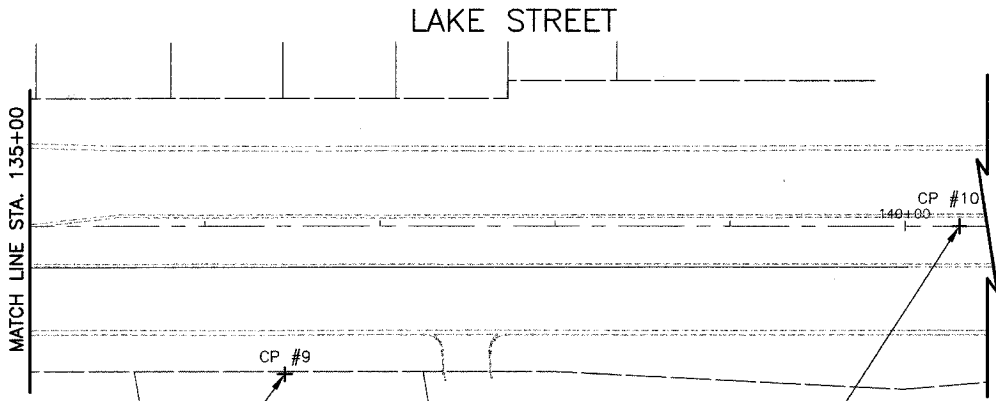
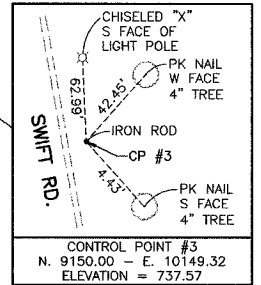
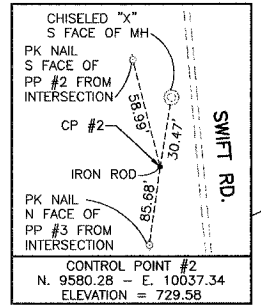
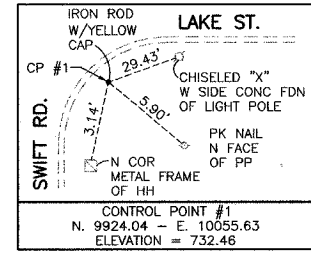
BENCHMARKS

- BM #1 RAILROAD SPIKE IN POWER POLE. STA. 142+97.76' RT. U.S. ROUTE 20. ELEV. 747.72
- BM #2 RAILROAD SPIKE IN POWER POLE. STA. 805+23.25' LT. SWIFT RD. ELEV. 741.43
- TBM #3 CONTROL POINT #3. IRON ROD SET ON EAST SIDE OF SWIFT ROAD APPROXIMATELY 900 FEET SOUTH OF LAKE/SWIFT INTERSECTION AND 8.5' EAST OF EAST E.O.P. OF SWIFT RD. ELEV. 737.57
- TBM #4 CONTROL POINT #9. IRON ROD SET ON SOUTH SIDE OF LAKE ST. APPROXIMATELY 625' EAST OF LAKE/SWIFT INTERSECTION AND 25' SOUTH OF SOUTH E.O.P. OF LAKE ST. ELEV. 738.57
- TBM #5 CONTROL POINT #1. IRON ROD SET ON SOUTHEAST CORNER OF LAKE/SWIFT INTERSECTION. ELEV. 749.29



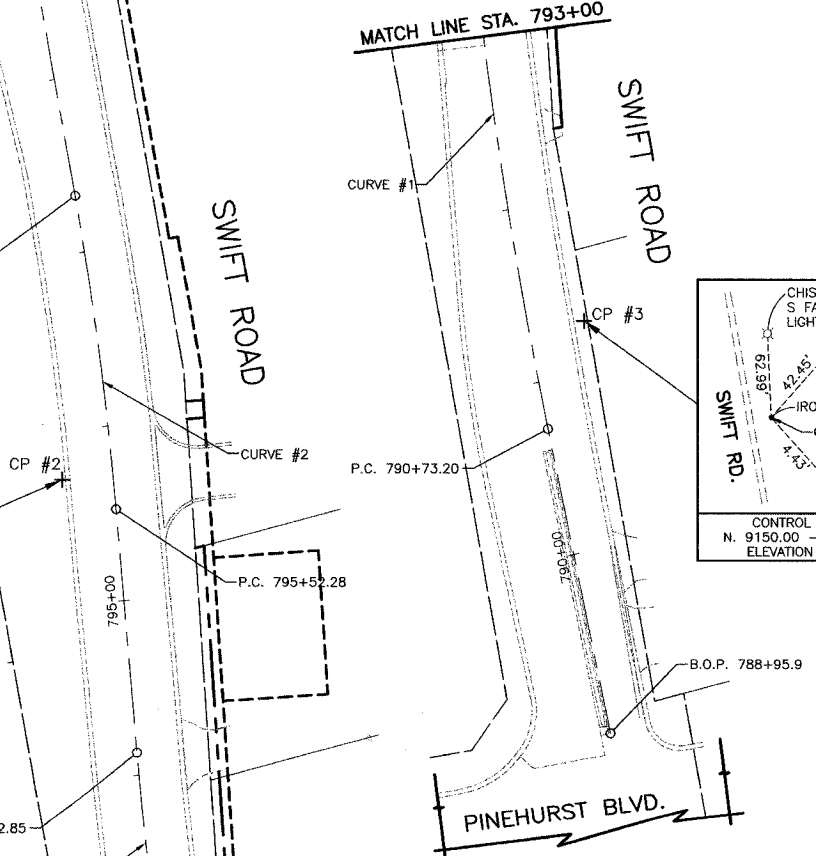
CURVE #1
 $\Delta = 06^\circ-42'-38''$
 $T = 170.02'$
 $R = 2900.00'$
 $L = 339.65'$
 $C = 339.45'$
 $E = 4.98'$
 P.C. STA. = 790+73.20
 P.T. STA. = 792+43.22
 $N = 9255.16$
 $E = 10094.58$
 P.T. STA. = 794+12.85

CURVE #2
 $\Delta = 05^\circ-09'-19''$
 $T = 90.04'$
 $R = 2000.00'$
 $L = 179.95'$
 $C = 179.89'$
 $E = 2.03'$
 P.C. STA. = 795+52.28
 P.T. STA. = 796+42.32
 $N = 9653.19$
 $E = 10060.45$
 P.T. STA. = 797+32.24

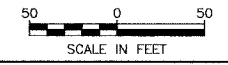


BASELINE COORDINATES - SWIFT ROAD			
STATION	DESCRIPTION	NORTHING	EASTING
788+95.9	B.O.P. (SWIFT RD.)	8914.95	10164.44
790+73.2	P.C. (CURVE #1)	9088.62	10128.77
794+12.85	P.T. (CURVE #1)	9424.56	10080.04
795+52.28	P.C. (CURVE #2)	9563.48	10068.14
797+32.24	P.T. (CURVE #2)	9741.85	10044.73
799+94.41	C-C (LAKE/SWIFT)	10000.00	9998.97
801+91.93	P.I.	10194.48	9984.49
806+00	E.O.P. (SWIFT RD.)	10595.73	9890.18
BASELINE COORDINATES - LAKE STREET			
STATION	DESCRIPTION	NORTHING	EASTING
115+00	B.O.P. (LAKE ST.)	10000.00	8488.62
130+10.35	C-C (LAKE/SWIFT)	10000.00	9998.97
140+50	E.O.P. (LAKE ST.)	10000.00	11038.62

B.O.P. = BEGINNING OF PROJECT ALIGNMENT
 P.C. = POINT OF CURVATURE
 P.T. = POINT OF TANGENCY
 E.O.P. = END OF PROJECT ALIGNMENT



REVISIONS	
NAME	DATE



VILLAGE OF ADDISON
ALIGNMENT, TIES AND BENCHMARKS
 LAKE STREET/SWIFT ROAD

DATE: 4/01/05
 DESIGNED BY: S.J.C.
 CHECKED BY: D.W.B.

