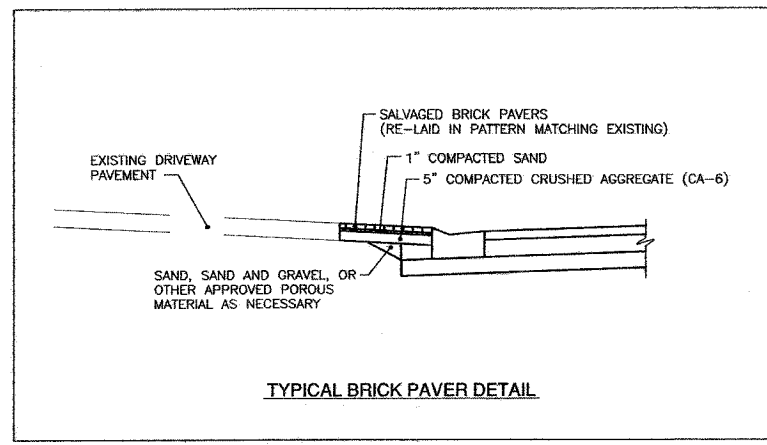
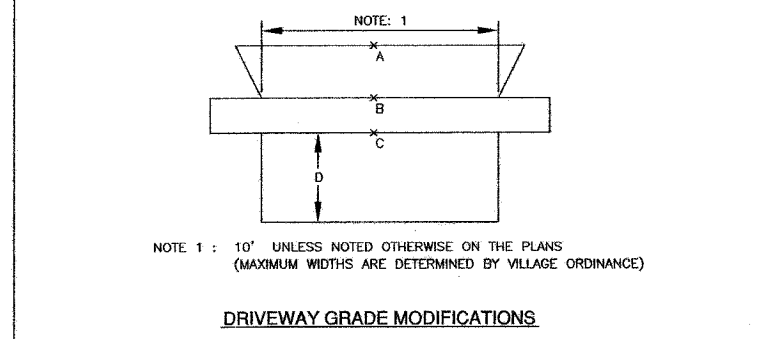


STATION	OFFSET	ADDRESS	A	B	C	D (ft)
108+75	27' RT.	# 211 W	612.55	613.29	613.39	15.0
109+76	10' RT.	# 215	612.23	612.99	613.09	10.0
112+26	10.5' LT.	# 228	611.85	612.64	612.74	10.0
112+31	10' RT.	# 231/235	611.75	612.50	612.60	8.0
112+86	10' RT.	# 236	611.61	612.13	612.23	30.0
112+89	10' LT.	# 239	611.60	612.48	612.58	30.0
113+36	10' RT.	# 243	611.40	612.23	612.33	15.0
115+70	8.5' LT.	# 256	610.73	611.76	611.86	25.0
115+77	59' RT.	# 259	610.53	611.68	611.78	30.0
116+21	10' LT.	# 260	611.03	611.95	612.05	10.0
118+24	10' RT.	# 279	611.29	612.20	612.30	25.0
119+22	10' RT.	# 283/285	610.91	611.86	611.96	25.0



M.W.R.D. GENERAL NOTES

1. THE MWRD SEWER PERMIT SECTION FIELD OFFICE MUST BE NOTIFIED AT LEAST TWO (2) DAYS PRIOR TO THE COMMENCEMENT OF WORK (CALL (708) 588-4055)
2. ELEVATION DATUM IS U.S.G.S.
3. ALL CONCRETE, REINFORCED CONCRETE AND PVC SANITARY AND STORM SEWER IN COMBINED SEWER AREA, AND SEWER PIPE JOINTS SHALL CONFORM TO:

MATERIAL	JOINT SPEC	MATERIAL	JOINT SPEC
Concrete Pipe (C-14)	C-443	PVC Gravity Sewer Pipe 6" to 15" Diameter SDR 26 D-3034	
RCP (C-76)	C-443	18" to 27" Diameter F/dy=46 F-697	
		Joints - Gasket	D-3212
		- Solvent	D-2855

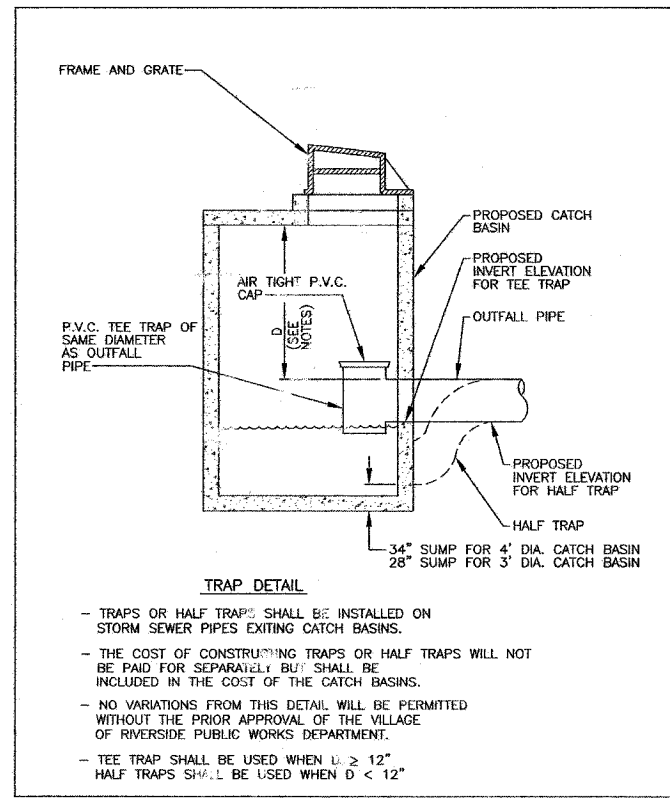
4. ALL SANITARY, AND STORM IN COMBINED SEWER AREAS, SEWER CONSTRUCTION REQUIRES STONE BEDDING 1/4" TO 1" IN SIZE, WITH A MINIMUM THICKNESS EQUAL TO 1/4 THE OUTSIDE DIAMETER OF THE SEWER PIPE, BUT NOT LESS THAN FOUR (4) INCHES NOR MORE THAN EIGHT (8) INCHES. MATERIAL SHALL BE CA-11 OR CA-13 AND SHALL BE EXTENDED AT LEAST 2" ABOVE THE TOP OF THE PIPE WHEN USING PVC.

5. "BAND-SEAL" OR SIMILAR FLEXIBLE-TYPE COUPLINGS SHALL BE USED IN THE CONNECTION OF SEWER PIPE OF DISSIMILAR MATERIALS.
6. WHEN CONNECTING TO AN EXISTING SEWER MAIN BY MEANS OTHER THAN AN EXISTING MANHOLE, ONE OF THE FOLLOWING METHODS SHALL BE USED:

- A. CIRCULAR SAW-CUT OF SEWER MAIN BY PROPER TOOLS ("SEWER-TAP" MACHINE OR SIMILAR) AND PROPER INSTALLATION OF HUB-WYE SADDLE OR HUB-TEE SADDLE.
- B. REMOVE AN ENTIRE SECTION OF PIPE (BREAKING ONLY THE TOP OF ONE BELL) AND REPLACE WITH WYE OR TEE BRANCH SECTION.
- C. WITH PIPE CUTTER, NEATLY AND ACCURATELY CUT OUT DESIRED LENGTH OF PIPE FOR INSERTION OF PROPER FITTING, USING A "BAND-SEAL" OR SIMILAR COUPLINGS TO HOLD IT FIRMLY IN PLACE.

7. WHEREVER A SEWER CROSSES UNDER A WATERMAIN, THE MINIMUM VERTICAL DISTANCE FROM THE TOP OF THE SEWER TO THE BOTTOM OF THE WATERMAIN SHALL BE 18 INCHES. FURTHERMORE, A MINIMUM HORIZONTAL DISTANCE OF 10 FEET BETWEEN SANITARY SEWERS AND WATERMANS SHALL BE MAINTAINED UNLESS: THE SEWER IS LAID IN A SEPARATE TRENCH, KEEPING A MINIMUM 18" VERTICAL SEPARATION; OR THE SEWER IS LAID IN THE SAME TRENCH WITH THE WATERMAIN LOCATED AT THE OPPOSITE SIDE ON A BENCH OF UNDISTURBED EARTH, KEEPING A MINIMUM 18 INCH VERTICAL SEPARATION. IF EITHER THE VERTICAL OR HORIZONTAL DISTANCES DESCRIBED ABOVE CANNOT BE MAINTAINED, OR THE SEWER CROSSES ABOVE THE WATERMAIN, THE SEWER SHALL BE CONSTRUCTED TO WATERMAIN STANDARDS.

8. ALL MANHOLES SHALL BE PRECAST CONSTRUCTED AND FITTED WITH RUBBER GASKETED BOOT STYLE COUPLINGS.



- TRAPS OR HALF TRAPS SHALL BE INSTALLED ON STORM SEWER PIPES EXITING CATCH BASINS.
- THE COST OF CONSTRUCTING TRAPS OR HALF TRAPS WILL NOT BE PAID FOR SEPARATELY BUT SHALL BE INCLUDED IN THE COST OF THE CATCH BASINS.
- NO VARIATIONS FROM THIS DETAIL WILL BE PERMITTED WITHOUT THE PRIOR APPROVAL OF THE VILLAGE OF RIVERSIDE PUBLIC WORKS DEPARTMENT.
- TEE TRAP SHALL BE USED WHEN D ≥ 12"
- HALF TRAPS SHALL BE USED WHEN D < 12"

REVISIONS		
NAME	DATE	
IDOT REV. #1	12/30/04	