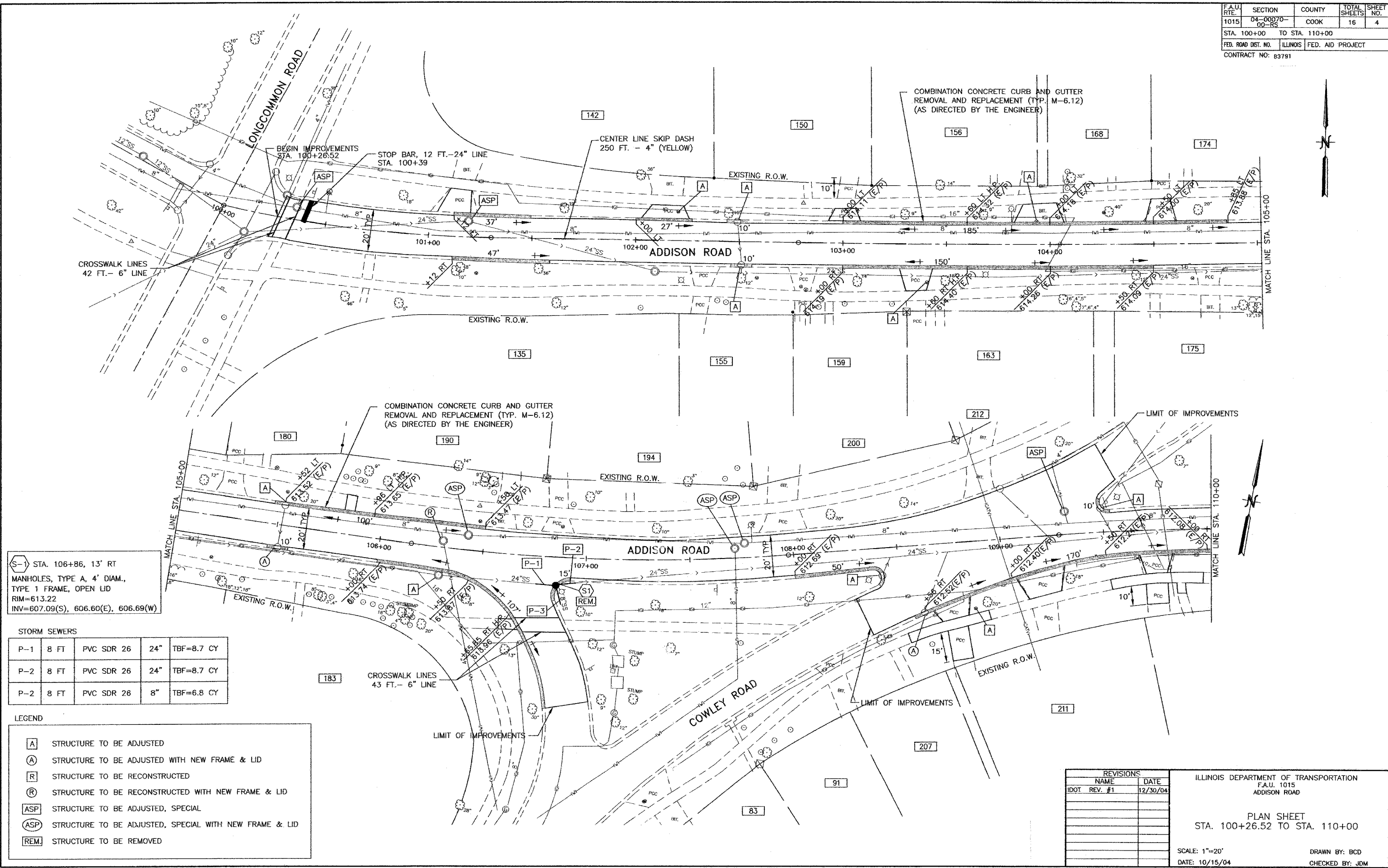


F.A.U. RTE.	SECTION	COUNTY	TOTAL SHEETS	SHEET NO.
1015	04-00070-00-RS	COOK	16	4
STA. 100+00 TO STA. 110+00				
FED. ROAD DIST. NO.	ILLINOIS	FED. AID PROJECT		
CONTRACT NO: 83791				



S-1 STA. 106+86, 13' RT
 MANHOLES, TYPE A, 4' DIAM.,
 TYPE 1 FRAME, OPEN LID
 RIM=613.22
 INV=607.09(S), 606.60(E), 606.69(W)

STORM SEWERS

P-1	8 FT	PVC SDR 26	24"	TBF=8.7 CY
P-2	8 FT	PVC SDR 26	24"	TBF=8.7 CY
P-2	8 FT	PVC SDR 26	8"	TBF=6.8 CY

LEGEND

- [A] STRUCTURE TO BE ADJUSTED
- (A) STRUCTURE TO BE ADJUSTED WITH NEW FRAME & LID
- [R] STRUCTURE TO BE RECONSTRUCTED
- (R) STRUCTURE TO BE RECONSTRUCTED WITH NEW FRAME & LID
- [ASP] STRUCTURE TO BE ADJUSTED, SPECIAL
- (ASP) STRUCTURE TO BE ADJUSTED, SPECIAL WITH NEW FRAME & LID
- [REM] STRUCTURE TO BE REMOVED

REVISIONS	
NAME	DATE
DOT REV. #1	12/30/04

ILLINOIS DEPARTMENT OF TRANSPORTATION
 F.A.U. 1015
 ADDISON ROAD

PLAN SHEET
 STA. 100+26.52 TO STA. 110+00

SCALE: 1"=20'
 DATE: 10/15/04

DRAWN BY: BCD
 CHECKED BY: JDM