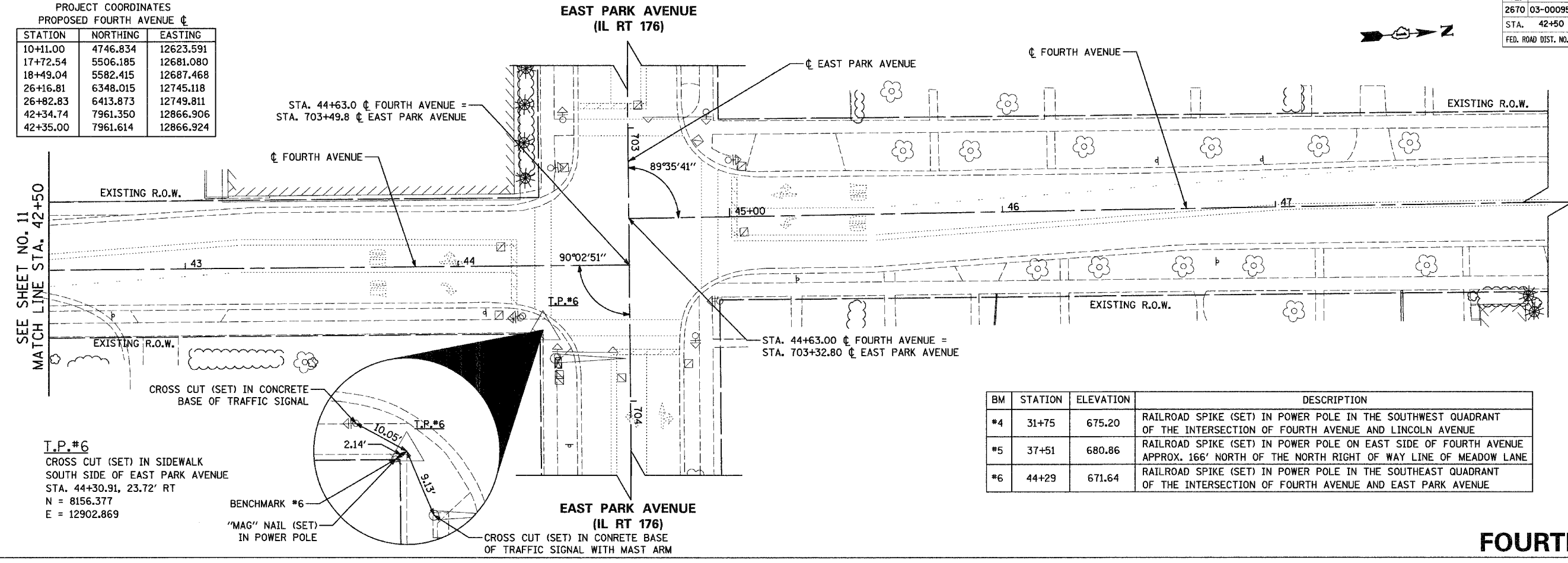


PROJECT COORDINATES  
PROPOSED FOURTH AVENUE C

STATION	NORTHING	EASTING
10+11.00	4746.834	12623.591
17+72.54	5506.185	12681.080
18+49.04	5582.415	12687.468
26+16.81	6348.015	12745.118
26+82.83	6413.873	12749.811
42+34.74	7961.350	12866.906
42+35.00	7961.614	12866.924

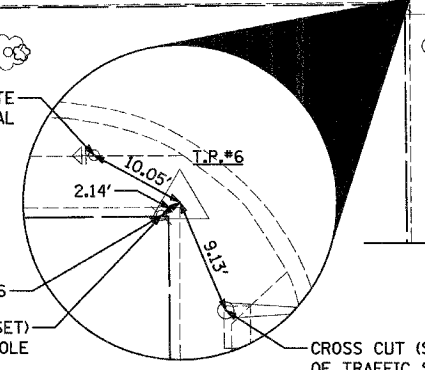
F.A. RTE.	SECTION	COUNTY	TOTAL SHEETS	SHEET NO.
2670	03-00095-00-RS	LAKE	67	12
STA. 42+50	TO STA. 48+00			
FED. ROAD DIST. NO. 1	ILLINOIS	STPM - 8003 (442)		
CONTRACT NO.: 83784				



BM	STATION	ELEVATION	DESCRIPTION
*4	31+75	675.20	RAILROAD SPIKE (SET) IN POWER POLE IN THE SOUTHWEST QUADRANT OF THE INTERSECTION OF FOURTH AVENUE AND LINCOLN AVENUE
*5	37+51	680.86	RAILROAD SPIKE (SET) IN POWER POLE ON EAST SIDE OF FOURTH AVENUE APPROX. 166' NORTH OF THE NORTH RIGHT OF WAY LINE OF MEADOW LANE
*6	44+29	671.64	RAILROAD SPIKE (SET) IN POWER POLE IN THE SOUTHEAST QUADRANT OF THE INTERSECTION OF FOURTH AVENUE AND EAST PARK AVENUE

**T.P.#6**  
CROSS CUT (SET) IN SIDEWALK  
SOUTH SIDE OF EAST PARK AVENUE  
STA. 44+30.91, 23.72' RT  
N = 8156.377  
E = 12902.869

**BENCHMARK #6**  
'MAG' NAIL (SET)  
IN POWER POLE



**FOURTH AVENUE**

**CG** Ciorba Group, Inc.  
CONSULTING ENGINEERS  
5507 North Cumberland Avenue, Suite 402, Chicago, Illinois 60656  
Tel. 773.775.4009 Fax 773.775.4014 Email chicago@ciorba.com

REVISIONS	
NAME	DATE

VILLAGE OF LIBERTYVILLE  
FOURTH AVENUE IMPROVEMENTS  
  
FOURTH AVENUE  
ALIGNMENT, TIES, & BENCHMARKS  
STA. 42+50 TO STA. 48+00

SCALE: 1"=20'  
DATE: JANUARY, 2005  
DRAWN BY: KDM  
CHECKED BY: MJL/MRJ