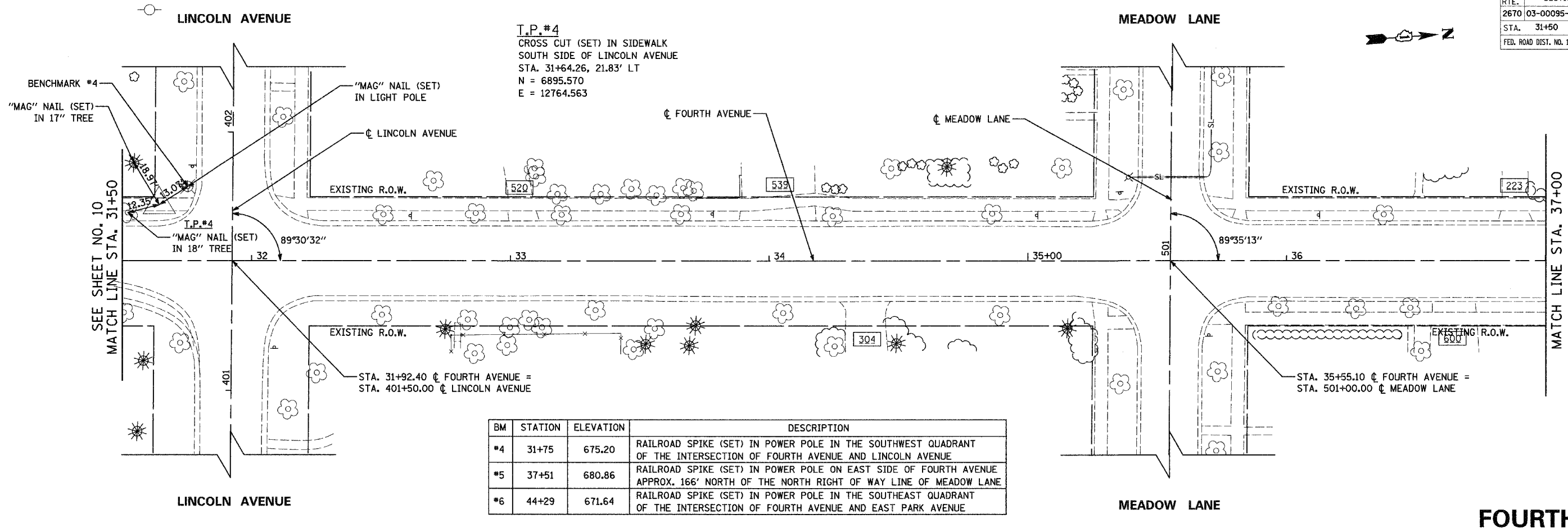
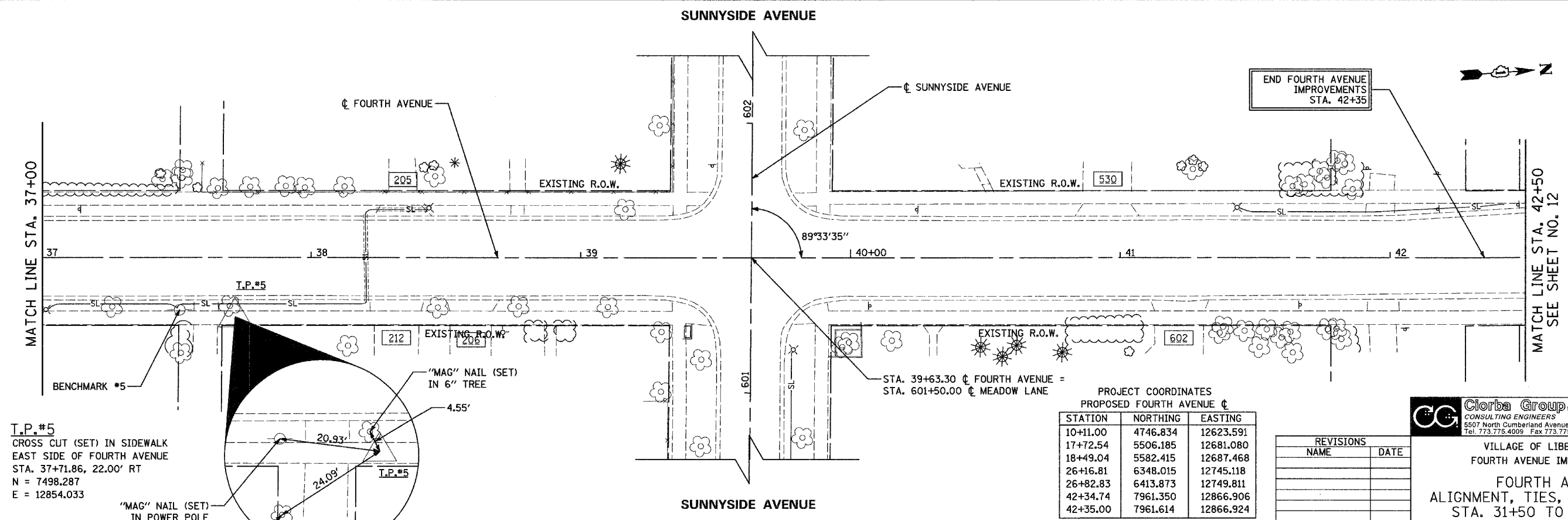


F.A. RTE.	SECTION	COUNTY	TOTAL SHEETS	SHEET NO.
2670	03-00095-00-RS	LAKE	67	11
STA. 31+50	TO STA. 42+50			
FED. ROAD DIST. NO. 1	ILLINOIS	STPM - 8003 (442)	CONTRACT NO.: 83784	



BM	STATION	ELEVATION	DESCRIPTION
#4	31+75	675.20	RAILROAD SPIKE (SET) IN POWER POLE IN THE SOUTHWEST QUADRANT OF THE INTERSECTION OF FOURTH AVENUE AND LINCOLN AVENUE
#5	37+51	680.86	RAILROAD SPIKE (SET) IN POWER POLE ON EAST SIDE OF FOURTH AVENUE APPROX. 166' NORTH OF THE NORTH RIGHT OF WAY LINE OF MEADOW LANE
#6	44+29	671.64	RAILROAD SPIKE (SET) IN POWER POLE IN THE SOUTHEAST QUADRANT OF THE INTERSECTION OF FOURTH AVENUE AND EAST PARK AVENUE



PROJECT COORDINATES
PROPOSED FOURTH AVENUE C

STATION	NORTHING	EASTING
10+11.00	4746.834	12623.591
17+72.54	5506.185	12681.080
18+49.04	5582.415	12687.468
26+16.81	6348.015	12745.118
26+82.83	6413.873	12749.811
42+34.74	7961.350	12866.906
42+35.00	7961.614	12866.924

REVISIONS	
NAME	DATE

Clorba Group, Inc.
CONSULTING ENGINEERS
5507 North Cumberland Avenue, Suite 402, Chicago, Illinois 60656
Tel. 773.775.4009 Fax 773.775.4014 Email chicago@clorba.com

VILLAGE OF LIBERTYVILLE
FOURTH AVENUE IMPROVEMENTS

FOURTH AVENUE
ALIGNMENT, TIES, & BENCHMARKS
STA. 31+50 TO STA. 42+50

SCALE: 1"=20'
DATE: JANUARY, 2005

DRAWN BY: KDM
CHECKED BY: MJL/MRJ

T.P.#5
CROSS CUT (SET) IN SIDEWALK
EAST SIDE OF FOURTH AVENUE
STA. 37+71.86, 22.00' RT
N = 7498.287
E = 12854.033

T.P.#4
CROSS CUT (SET) IN SIDEWALK
SOUTH SIDE OF LINCOLN AVENUE
STA. 31+64.26, 21.83' LT
N = 6895.570
E = 12764.563