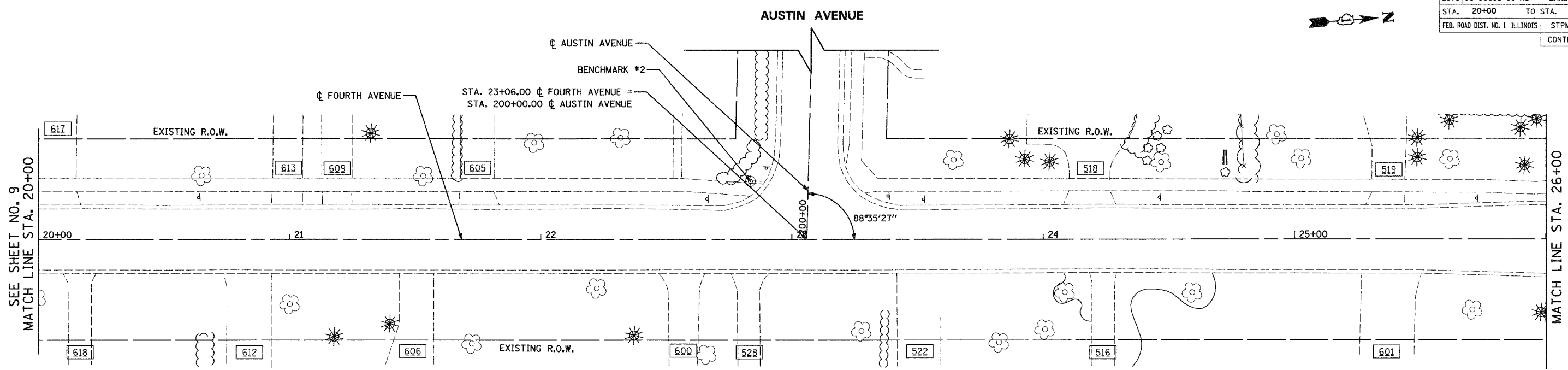
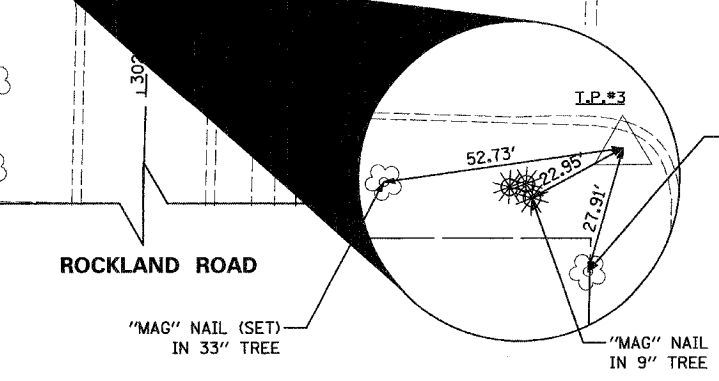
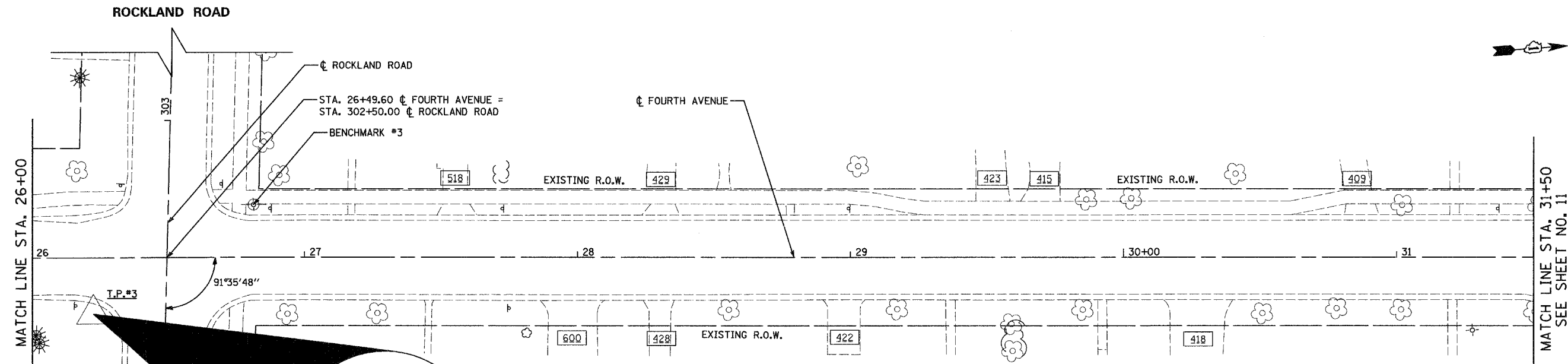


F.A. RTE.	SECTION	COUNTY	TOTAL SHEETS	SHEET NO.
2670	03-00095-00-RS	LAKE	67	10
STA. 20+00	TO STA. 31+50			
FED. ROAD DIST. NO. 1	ILLINOIS	STPM - 8003 (442)		
CONTRACT NO.: 83784				



BM	STATION	ELEVATION	DESCRIPTION
#1	11+53	683.42	RAILROAD SPIKE (SET) IN THE FIRST POWER POLE NORTH OF VALLEY PARK DRIVE ON THE EAST SIDE OF FOURTH AVENUE
#2	22+83	673.18	RAILROAD SPIKE (SET) IN POWER POLE IN THE SOUTHWEST QUADRANT OF THE INTERSECTION OF FOURTH AVENUE AND AUSTIN AVENUE
#3	26+81	687.68	RAILROAD SPIKE (SET) IN POWER POLE IN THE NORTHWEST QUADRANT OF THE INTERSECTION OF FOURTH AVENUE AND ROCKLAND ROAD

**FOURTH AVENUE**



**T.P.#3**  
 5/8" IRON ROD (SET) WITH "TRAVERSE STATION" CAP  
 SOUTH SIDE OF ROCKLAND ROAD  
 STA. 26+22.68, 20.59' RT  
 N = 6352.811  
 E = 12765.721

PROJECT COORDINATES  
 PROPOSED FOURTH AVENUE C

STATION	NORTHING	EASTING
10+11.00	4746.834	12623.591
17+72.54	5506.185	12681.080
18+49.04	5582.415	12687.468
26+16.81	6348.015	12745.118
26+82.83	6413.873	12749.811
42+34.74	7961.350	12866.906
42+35.00	7961.614	12866.924

REVISIONS	
NAME	DATE

**Giorba Group, Inc.**  
 CONSULTING ENGINEERS  
 5507 North Cumberland Avenue, Suite 402 Chicago, Illinois 60658  
 Tel. 773.775.4009 Fax 773.775.4014 Email chicago@giorba.com

VILLAGE OF LIBERTYVILLE  
 FOURTH AVENUE IMPROVEMENTS  
 FOURTH AVENUE  
 ALIGNMENT, TIES, & BENCHMARKS  
 STA. 20+00 TO STA. 31+50

SCALE: 1"=20'  
 DATE: JANUARY, 2005  
 DRAWN BY: KDM  
 CHECKED BY: MJL/MRJ

**FOURTH AVENUE**