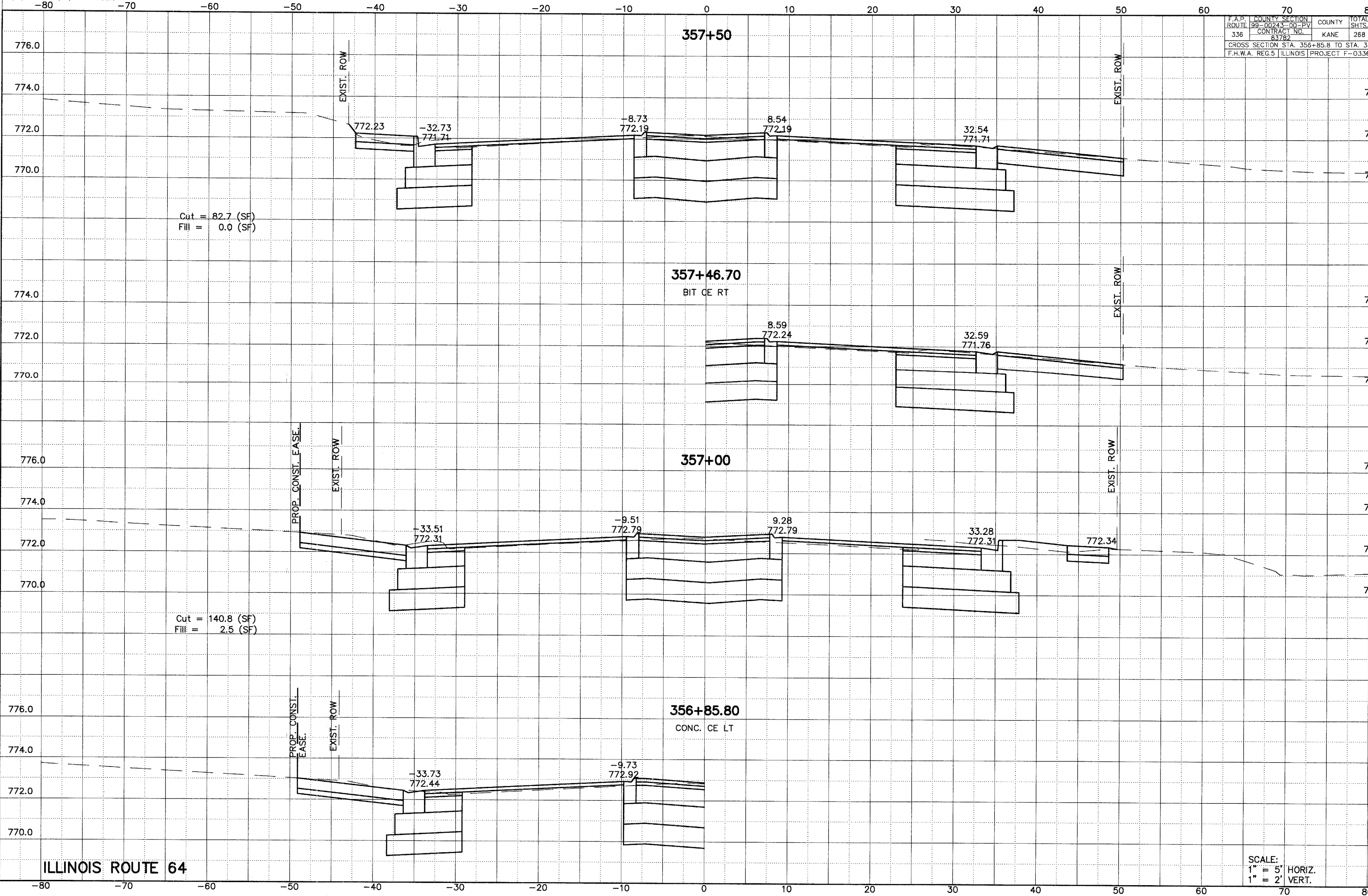


F.A.P.	COUNTY	SECTION	COUNTY	TOTAL
ROUTE 99-00243-00-PV	336	CONTRACT NO. 83782	KANE	268
CROSS SECTION STA. 356+85.8 TO STA. 357+85.8				
F.H.W.A. REG.5 ILLINOIS PROJECT F-0336				



Cut = 82.7 (SF)
Fill = 0.0 (SF)

Cut = 140.8 (SF)
Fill = 2.5 (SF)

ILLINOIS ROUTE 64

SCALE:
1" = 5' HORIZ.
1" = 2' VERT.