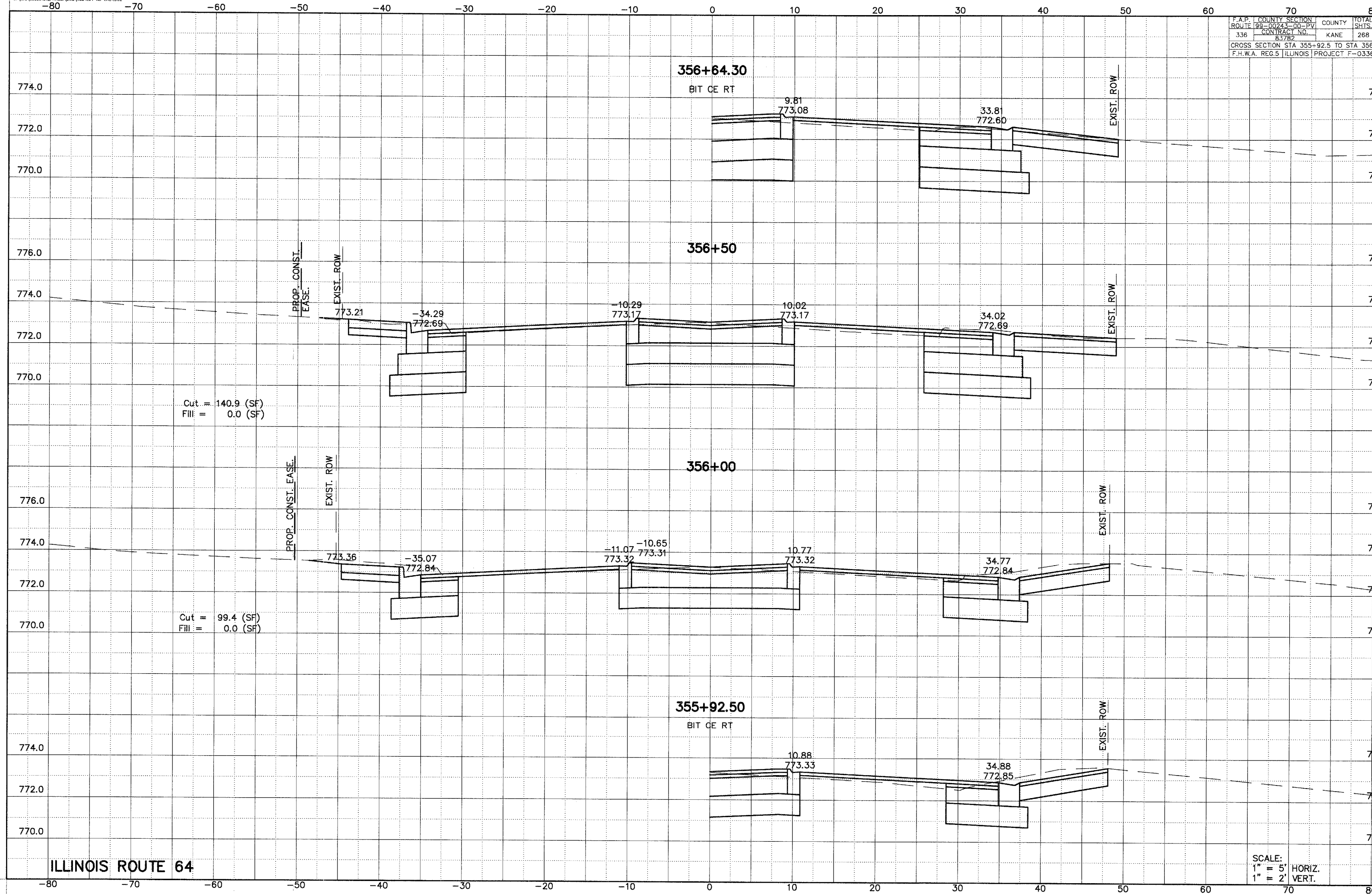


F.A.P.	COUNTY SECTION	COUNTY	TOTAL
ROUTE	99-00243-00-PV	KANE	268
336	CONTRACT NO.		
	83782		
CROSS SECTION STA 355+92.5 TO STA 356+64.3			
F.H.W.A. REG.5 ILLINOIS PROJECT F-0336			



ILLINOIS ROUTE 64

SCALE:
1" = 5' HORIZ.
1" = 2' VERT.