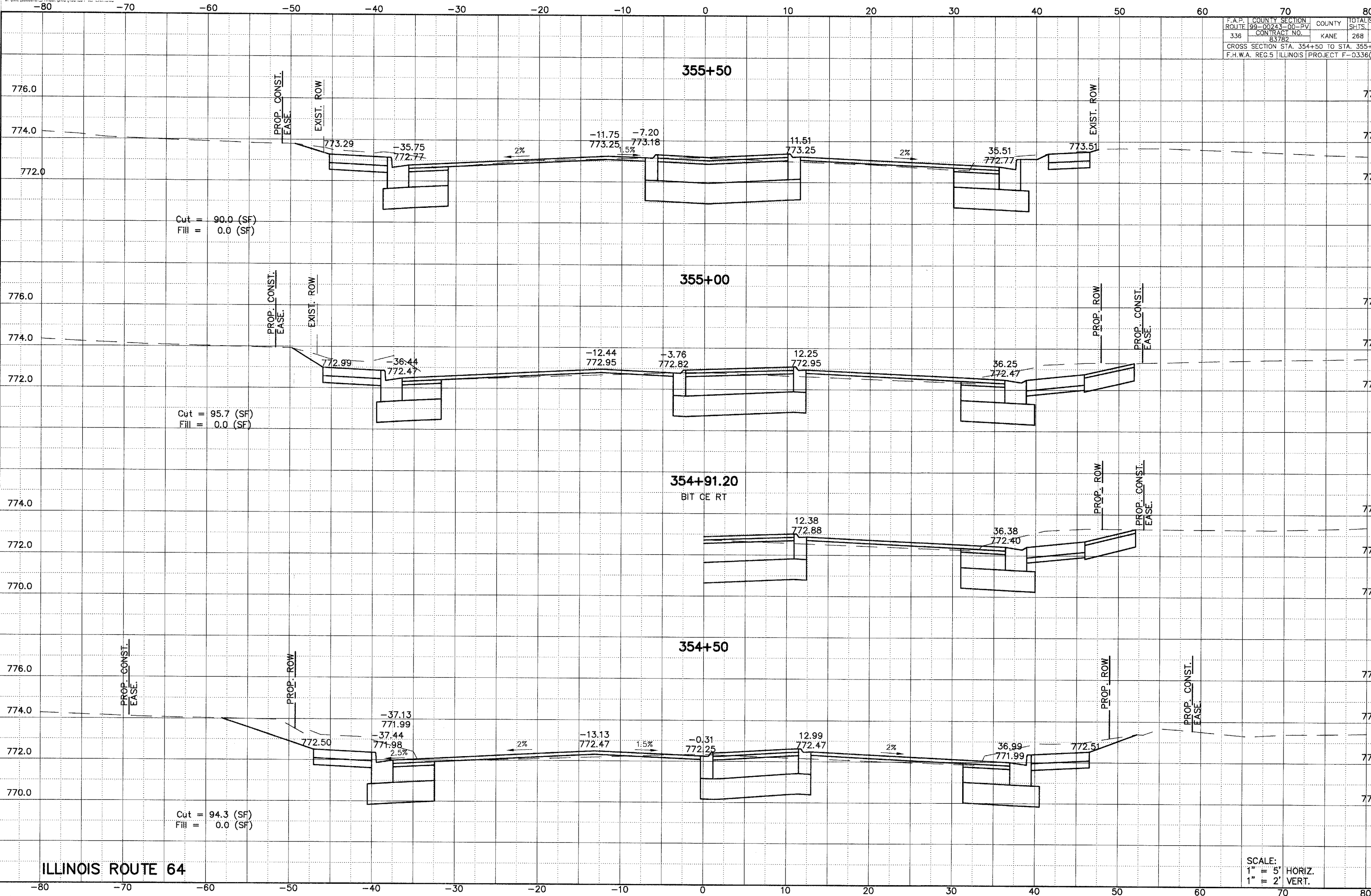


F.A.P. ROUTE	COUNTY SECTION	COUNTY	TOTAL SHEETS
336	99-00243-00-PV	KANE	268
	CONTRACT NO.		2
	83782		
CROSS SECTION STA. 354+50 TO STA. 355+50			
F.H.W.A. REG. 5 ILLINOIS PROJECT F-0336(00)			



ILLINOIS ROUTE 64

SCALE:
1" = 5' HORIZ.
1" = 2' VERT.