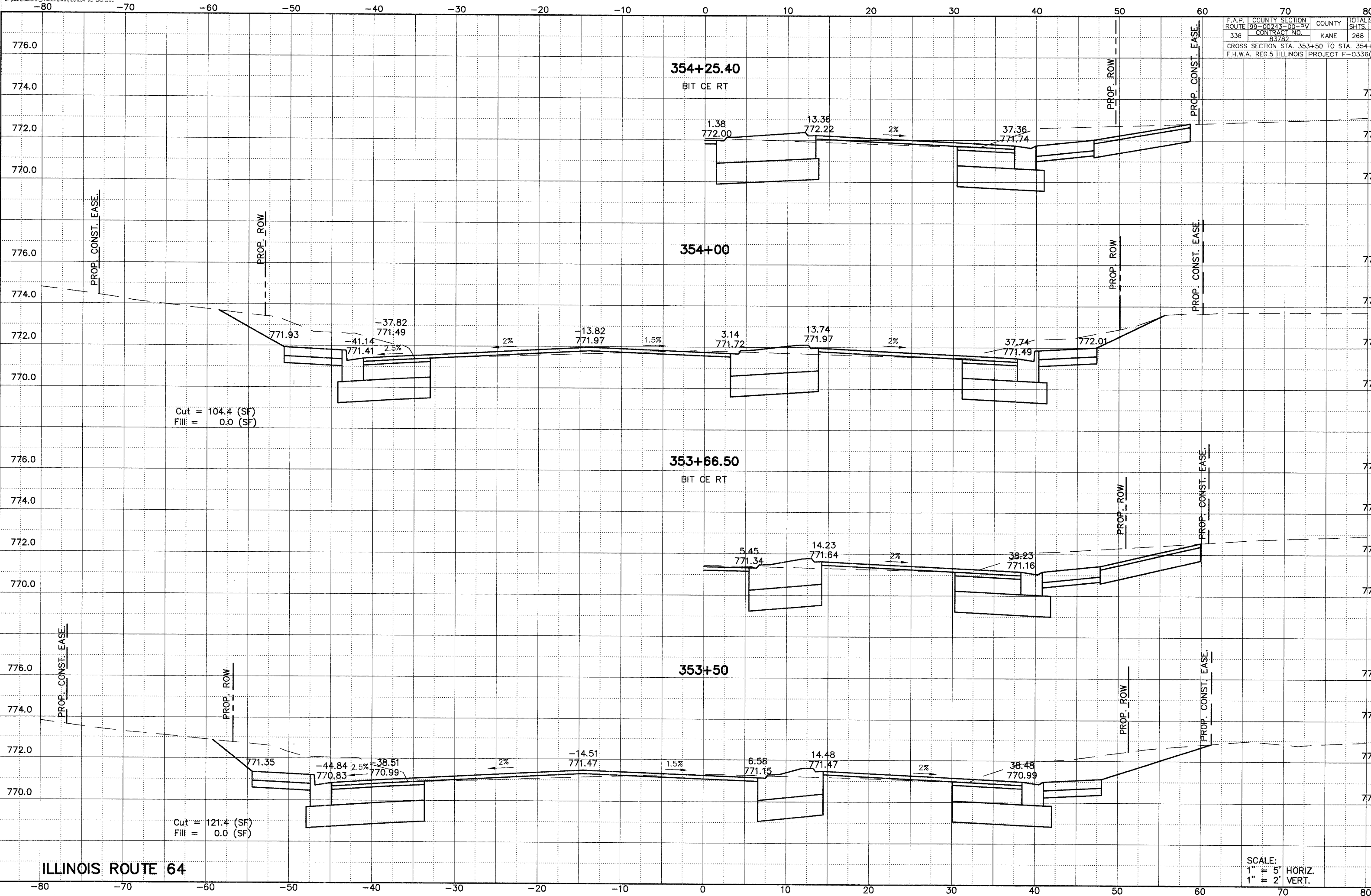


F.A.P. COUNTY SECTION	70	TOTAL SH	80
ROUTE 99-00243-00-PV	KANE	SHTS. N	288
336	CONTRACT NO. 83782	268	29
CROSS SECTION STA. 353+50 TO STA. 354+25			
F.H.W.A. REG.5 ILLINOIS PROJECT F-0336(00			



Cut = 104.4 (SF)
Fill = 0.0 (SF)

Cut = 121.4 (SF)
Fill = 0.0 (SF)

ILLINOIS ROUTE 64

SCALE:
1" = 5' HORIZ.
1" = 2' VERT.