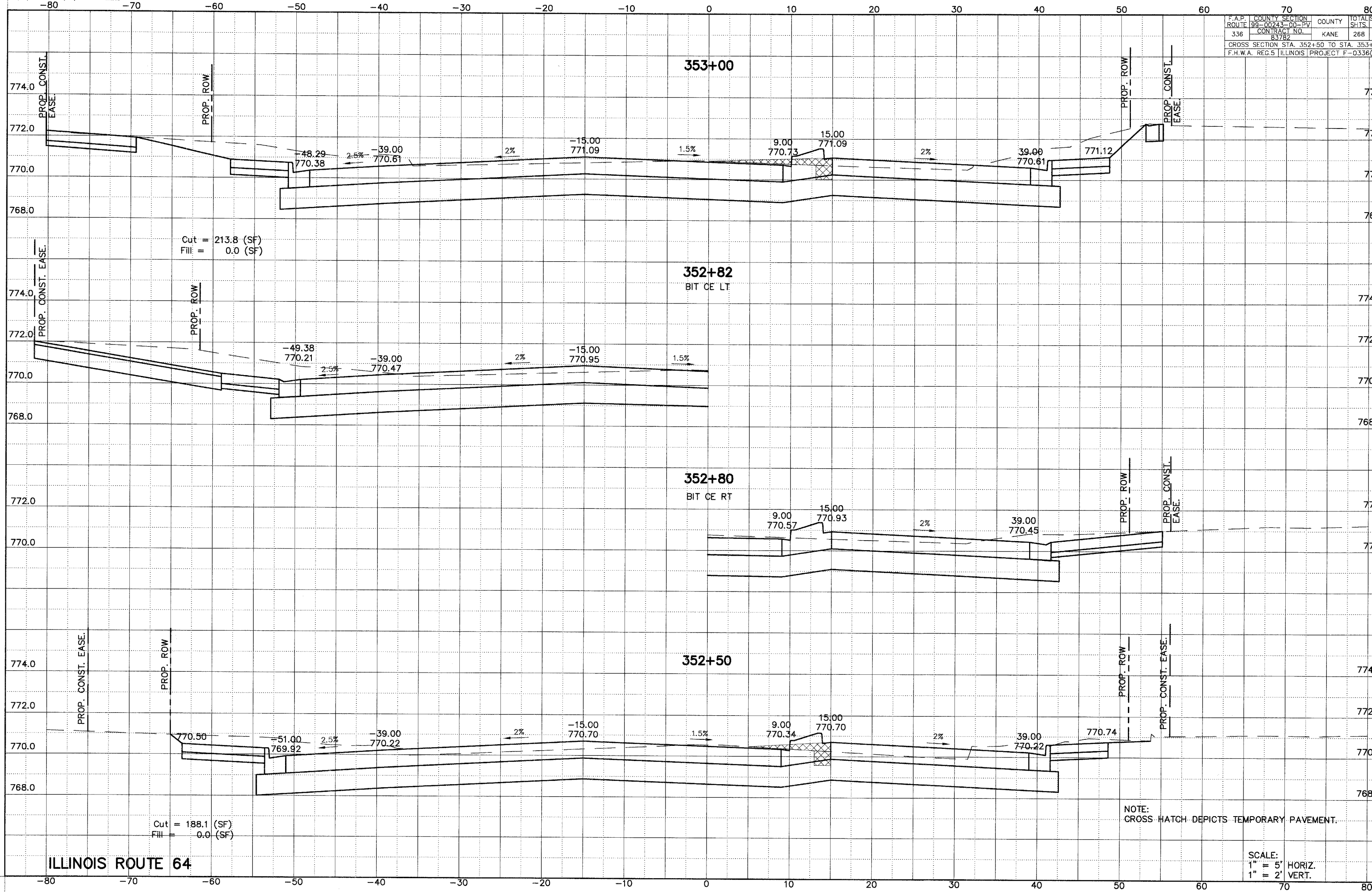


F.A.P.	COUNTY	SECTION	COUNTY	TOTAL SH.
ROUTE 99-00243-00-PV	336	CONTRACT NO. 83782	KANE	268 21
CROSS SECTION STA. 352+50 TO STA. 353+00			F.H.W.A. REG.5 ILLINOIS PROJECT F-0336(00)	



ILLINOIS ROUTE 64

SCALE:
1" = 5' HORIZ.
1" = 2' VERT.