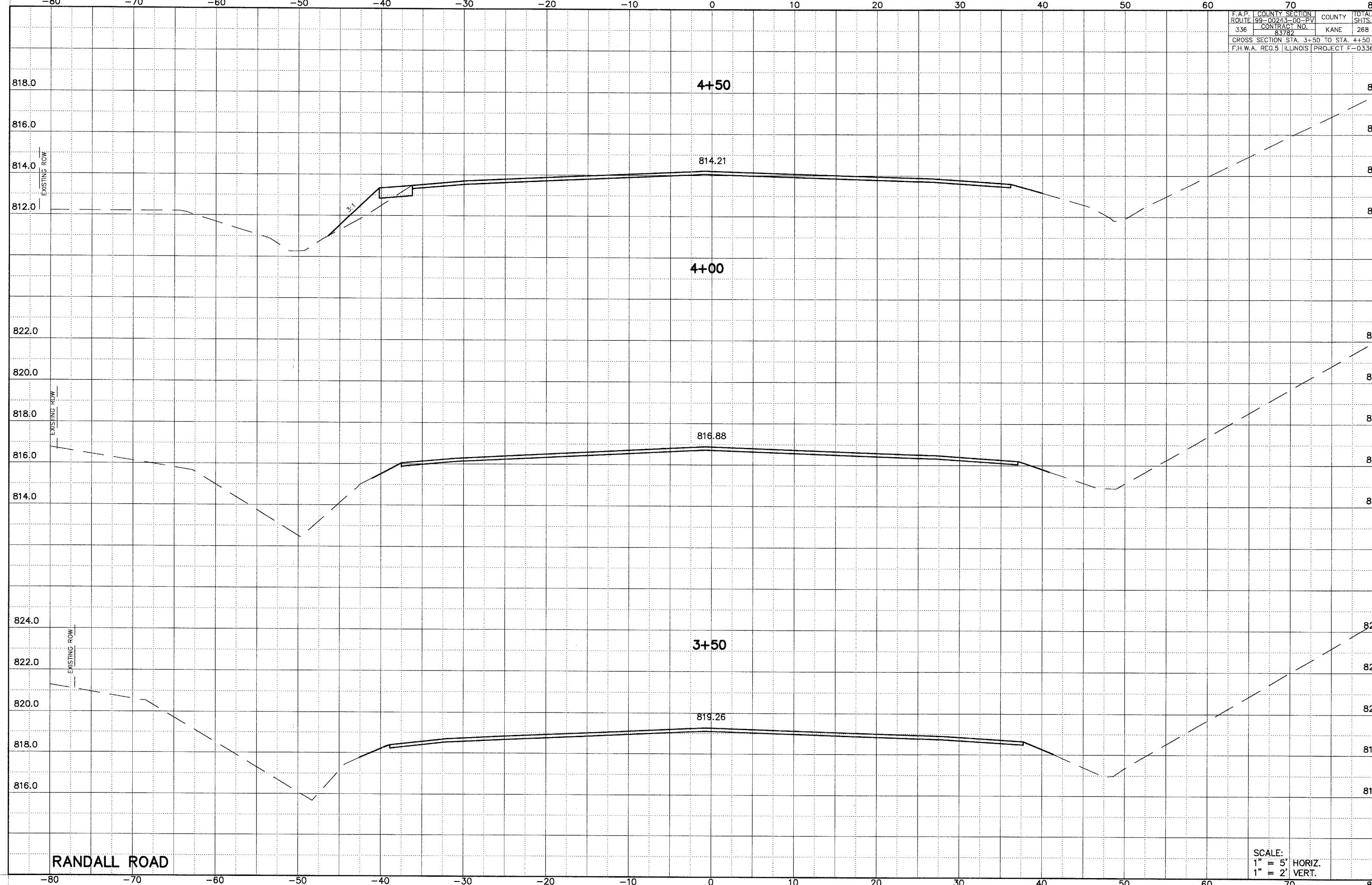


F.A.P.	COUNTY	SECTION	TOTAL
ROUTE 336	99-00243-00-PV	KANE	268
CONTRACT NO. 83782		CROSS SECTION STA. 3+50 TO STA. 4+50	
F.H.W.A. REG.5 ILLINOIS		PROJECT F-0336	



RANDALL ROAD

SCALE:
 1" = 5' HORIZ.
 1" = 2' VERT.