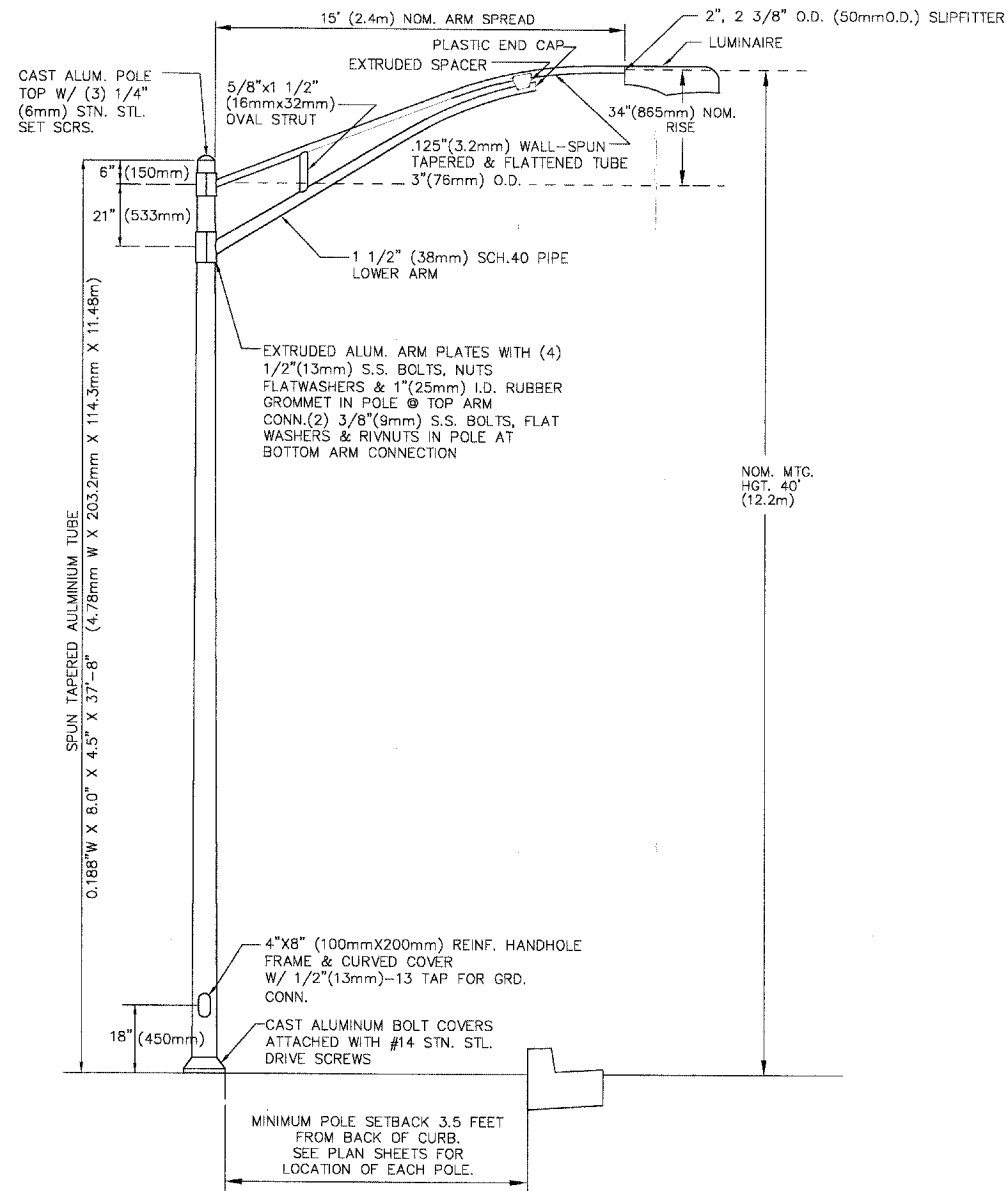
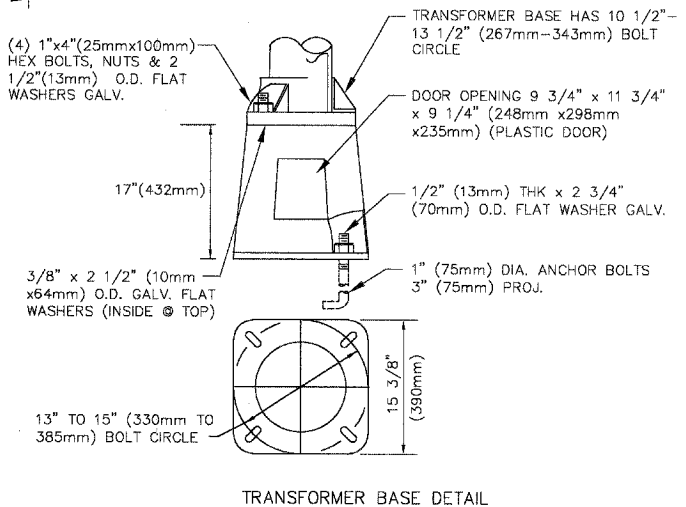


### LIGHT POLE, ALUMINUM, 40 FT. MOUNTING HEIGHT, 15 FT. MAST ARM

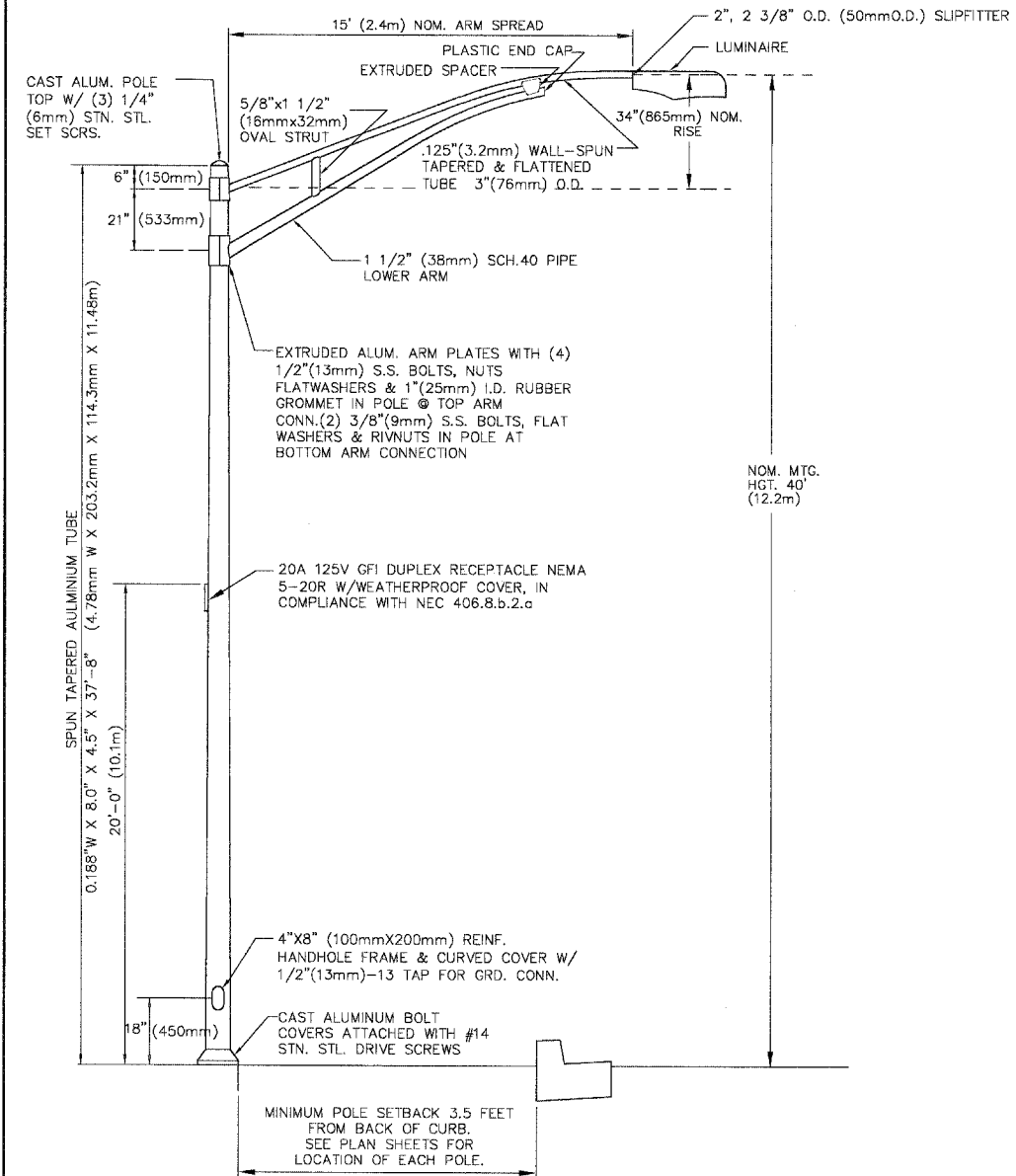


- GENERAL DESIGN CRITERIA:**
- POLES & ARMS HEAT TREATED TO - T6 TEMPER AFTER WELDING.
  - POLES TO BE PAPER WRAPPED C/W RIP CORD FOR EASY REMOVAL.
  - FINISH: POLES AND ARMS - POWDERCOAT DARK BRONZE
  - DESIGNED IN ACCORDANCE WITH 1985 AASHTO FOR 80 M.P.H. WIND ZONE

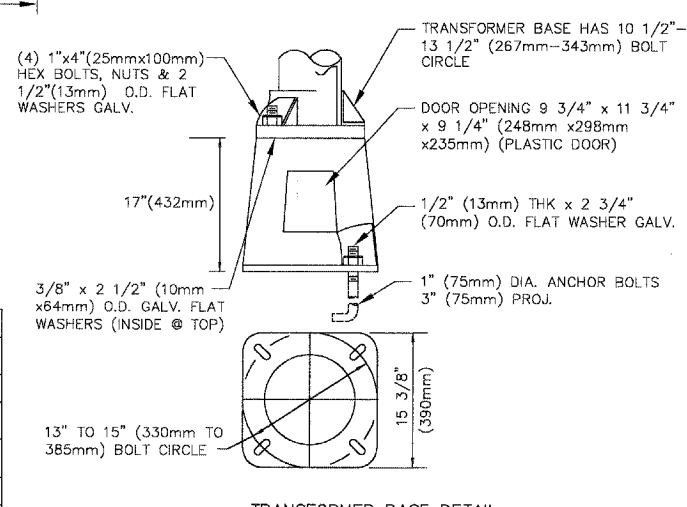


MATERIAL SPECIFICATIONS	
POLE & ARM TUBES	ASTM-B429 (6063-T6) OR B241
EXTRUSIONS	ASTM-B308 (6063-T6)
CAST H.H. FRAME & BASE	ASTM-B108 (356-T6)
CAST - TOP & BOLT COVERS	43,319 OR 356 ALLOY
SMALL HARDWARE	AISI-300 SERIES (STN.STL.)
ANCHOR BOLTS	ASTM-A36 M55

### LIGHT POLE, ALUMINUM, 40 FT. MOUNTING HEIGHT, 15 FT. MAST ARM WITH FESTOON OUTLET



- GENERAL DESIGN CRITERIA:**
- POLES & ARMS HEAT TREATED TO - T6 TEMPER AFTER WELDING.
  - POLES TO BE PAPER WRAPPED C/W RIP CORD FOR EASY REMOVAL.
  - FINISH: POLES AND ARMS - POWDERCOAT DARK BRONZE
  - DESIGNED IN ACCORDANCE WITH 1985 AASHTO FOR 80 M.P.H. WIND ZONE



MATERIAL SPECIFICATIONS	
POLE & ARM TUBES	ASTM-B429 (6063-T6) OR B241
EXTRUSIONS	ASTM-B308 (6063-T6)
CAST H.H. FRAME & BASE	ASTM-B108 (356-T6)
CAST - TOP & BOLT COVERS	43,319 OR 356 ALLOY
SMALL HARDWARE	AISI-300 SERIES (STN.STL.)
ANCHOR BOLTS	ASTM-A36 M55

REVISIONS	
NAME	DATE
PER BEO REVIEW	10-7-04
PER BEO REVIEW	12-29-04

**STREET LIGHTING DETAILS**

LIGHT STANDARDS

**RANDALL ROAD**

SCALE: NONE  
DATE: 5-26-04

DRAWN BY: JMH  
CHECKED BY: DAY