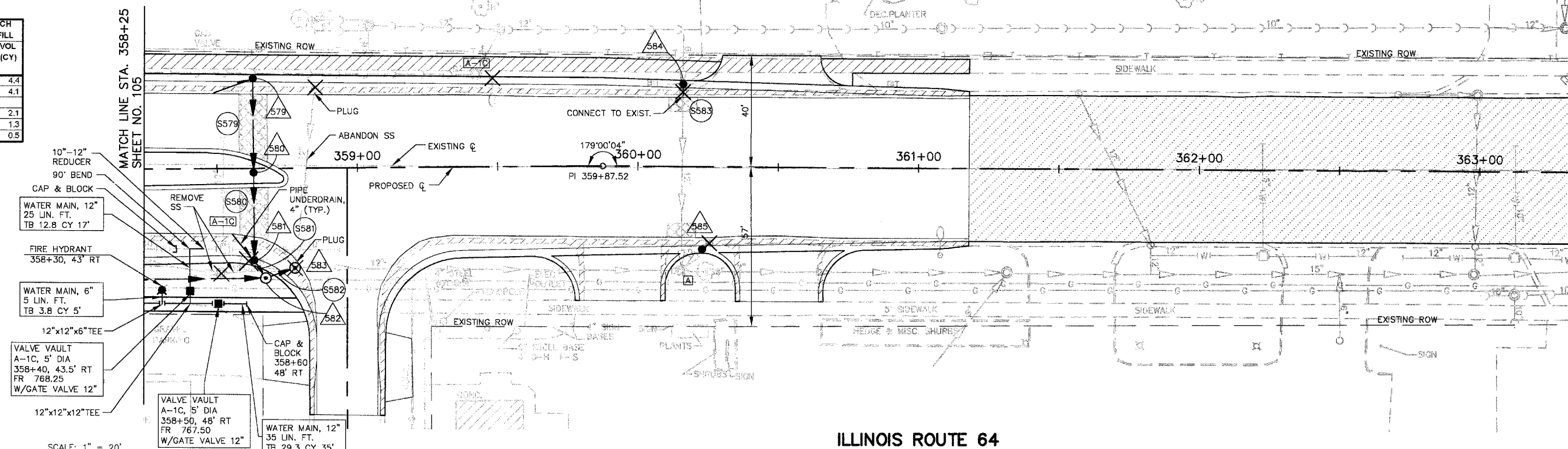


NO.	STA.	OFFSET	STRUCTURE TYPE/SIZE				FRAME & GRATE	RIM ELEV EP/FR	INVERT (N)	INVERT (S)	INVERT (E)	INVERT (W)
			MH	CB	INL	OTHER						
579	358+63	30.95' LT		A4			24	769.83		766.83		
580	358+63	1.5' RT		A4			1P	770.34	766.48	766.38		
581	358+63	32.06' RT		A4			24	769.81	766.24	766.14		
582	358+67	39.0' RT		A4			1C	770.20	766.10		766.00	766.11
583	358+77.5	35.5' RT		A4			1C	769.51			765.83 EX	765.93
584	360+16	28.30' LT					24	767.30	764.82 EX	764.03		
585	360+23	28.13' RT		A4			24	767.18		763.41 EX		

PIPE NO.	LOCATION FROM STR #	LOCATION TO STR #	DESCRIPTION	DIA (IN)	L (FT)	S (%)	TRENCH BACKFILL	
							L (FT)	VOL (CY)
S579	579	580	SS 1 RCCP IV	12	33	0.45	33	4.4
S580	580	581	SS 1 RCCP IV "O" RING	12	31	0.45	31	4.1
S581	581	582	SS 1 RCCP IV	12	7	0.57	7	2.1
S582	582	583	SS 1 RCCP IV	15	11	0.64	11	1.3
S583	584	EX	SS 1 RCCP IV	12	4	1.00	4	0.5



- 10"-12" REDUCER 90° BEND
- CAP & BLOCK
- WATER MAIN, 12" 25 LIN. FT. TB 12.8 CY 17'
- FIRE HYDRANT 358+30, 43' RT
- WATER MAIN, 6" 5 LIN. FT. TB 3.8 CY 5'
- 12"x12"x6" TEE
- VALVE VAULT A-1C, 5' DIA 358+40, 43.5' RT FR 768.25 W/GATE VALVE 12"
- 12"x12"x12" TEE
- VALVE VAULT A-1C, 5' DIA 358+50, 48' RT FR 767.50 W/GATE VALVE 12"
- WATER MAIN, 12" 35 LIN. FT. TB 29.3 CY 35'

SCALE: 1" = 20'

ILLINOIS ROUTE 64

