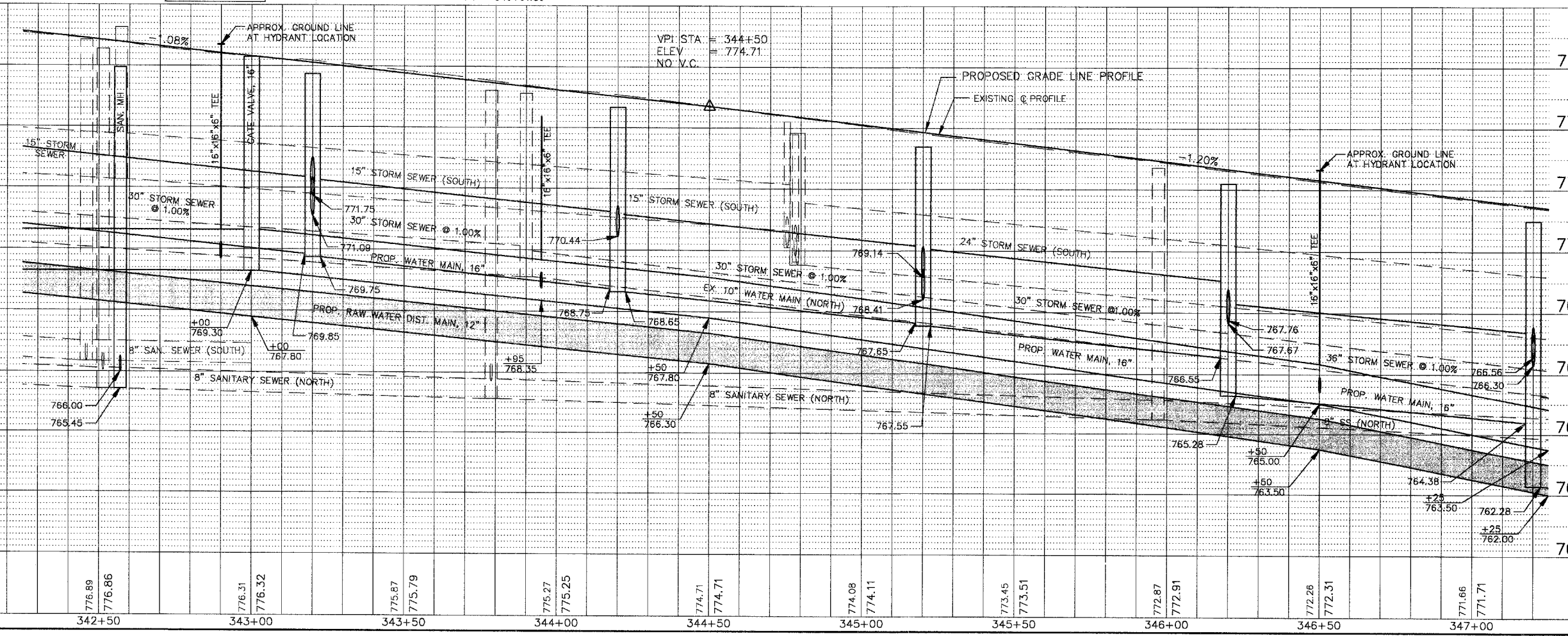
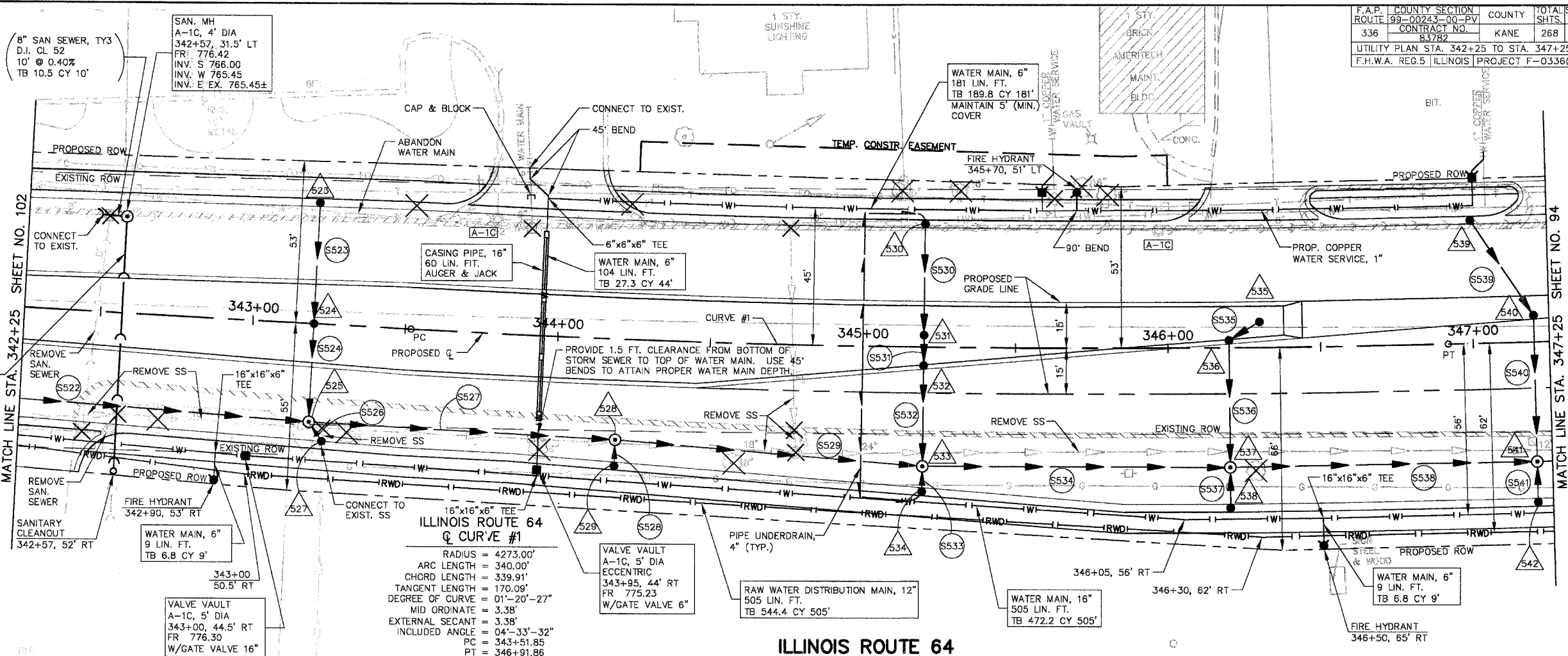


DRAINAGE STRUCTURE TABLE STA. 342+25 TO STA. 347+25

NO.	STA.	OFFSET	STRUCTURE			RIM ELEV EP/FR	INVERT (N)	INVERT (S)	INVERT (E)	INVERT (W)
			TYPE/SIZE	MH	CB					
523	343+20	38.25' LT	A 4"			775.63	772.05	772.44		
524	343+20	CL	A 4"			776.04	771.41	771.41		
525	343+20	32.25' RT	A 5"			775.75	771.09	771.75	769.75	769.85
526	NOT USED									
527	343+24.5	38.36' RT	A 4"			775.59	771.83	772.19 EX		
528	344+20	33.0' RT	A 5"			774.67	770.44	768.65	768.75	
529	344+20	40.37' RT	C 2"			774.52	770.52			
530	345+20	39.0' LT	A 4"			773.39		769.93		
531	345+20	4.0' LT	A 4"			773.67	769.57	768.93		
532	345+20	7.18' RT	A 4"			773.75	768.83	768.73		
533	345+20	39.0' RT	A 5"			773.39	768.41	769.14	767.55	767.85
534	345+20	45.99' RT	C 2"			773.22	769.22			
535	346+20	8.5' LT	A 4"			772.29		768.29		
536	346+20	1.31' LT	A 4"			772.43	768.17	768.07		
537	346+20	39.0' RT	A 5"			772.19	767.67	767.76	765.28	766.55
538	346+20	51.0' RT	C 2"			771.89	767.89			
539	347+00	39.0' LT	A 4"			771.23		767.77		
540	347+20	7.54' LT	A 4"			771.13	767.41	768.77		
541	347+20	39.0' RT	A 5"			770.99	766.30	766.56	762.28	764.38
542	347+20	51.0' RT	C 2"			770.69	766.69			



DRAINAGE STRUCTURE TABLE STA. 342+25 TO STA. 347+25

PIPE NO.	LOCATION FROM STR # TO STR #	DESCRIPTION	DIA (IN)	L (FT)	S (%)	TRENCH BACKFILL	
						L (FT)	VOL (CY)
S522	520	SS 2 RCCP IV	30	120	1.00	120	19.0
S523	523	SS 2 RCCP IV "O" RING	12	39	1.00	39	5.4
S524	524	SS 2 RCCP IV	12	32	1.00	32	4.2
S525	NOT USED						
S526	527	SS 1 RCCP IV "O" RING	15	8	1.00	8	1.0
S527	525	SS 2 RCCP IV "O" RING	30	100	1.00	100	15.8
S528	529	SS 1 RCCP IV "O" RING	12	8	1.00	8	1.1
S529	528	SS 2 RCCP IV	30	100	1.00	100	15.8
S530	530	SS 2 RCCP IV	12	36	1.00	36	4.8
S531	531	SS 2 RCCP IV	12	10	1.00	10	1.3
S532	532	SS 2 RCCP IV	12	32	1.00	32	4.2
S533	534	SS 1 RCCP IV "O" RING	12	8	1.00	8	1.1
S534	533	SS 2 RCCP IV	30	100	1.00	100	12.4
S535	535	SS 1 RCCP IV	12	12	1.00	12	1.6
S536	536	SS 2 RCCP IV	12	40	1.00	40	5.3
S537	538	SS 2 RCCP IV "O" RING	12	13	1.00	13	1.7
S538	537	SS 2 RCCP IV	36	100	1.00	100	24.4
S539	539	SS 1 RCCP IV	12	36	1.00	36	4.8
S540	540	SS 2 RCCP IV	12	47	1.00	47	8.1
S541	542	SS 2 RCCP IV "O" RING	12	13	1.00	13	1.7

SCALE: 1" = 20'