

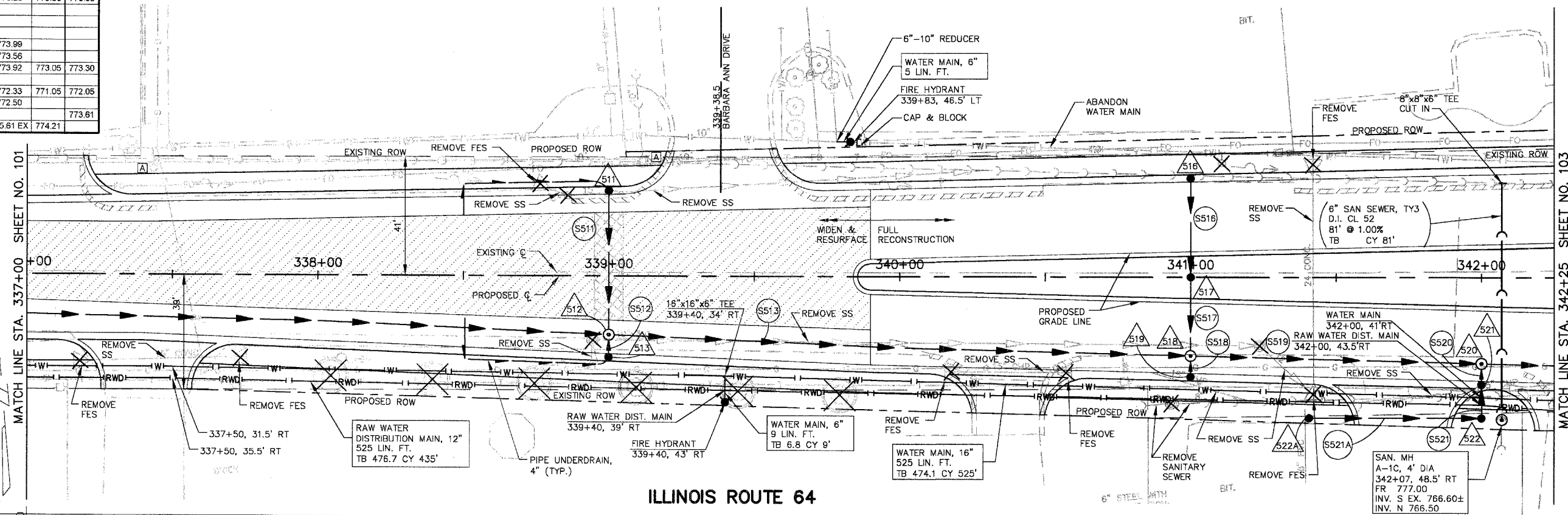
DRAINAGE STRUCTURE TABLE STA. 337+00 TO STA. 342+25

NO.	STA.	OFFSET	STRUCTURE TYPE/SIZE			FRAME & GRATE	RIM ELEV EPI/FR	INVERT (N)	INVERT (S)	INVERT (E)	INVERT (W)
			MH	CB	INL						
509	NOT	USED									
510	NOT	USED									
511	339+00	28.2' LT		A 4		24	780.30		776.30		
512	339+00	20.0' RT	A 4			1C	780.46	775.81	776.26	775.30	775.83
513	339+00	26.4' RT		A 4		24	780.33	776.33			
514	NOT	USED									
515	NOT	USED									
516	341+00	32.75' LT		A 4		24	777.99		773.99		
517	341+00	CL		A 4		1P	778.51	773.66	773.56		
518	341+00	26.75' RT	A 4			1C	778.11	773.30	773.92	773.05	773.30
519	341+00	32.75' RT		A 4		24	777.99	773.99			
520	342+00	29.25' RT		A 5		1C	777.04		772.33	771.05	772.05
521	342+00	35.25' RT		A 5		24	776.92	772.40	772.50		
522	342+00	48' RT		A 5		8	778.90	772.61			773.61
522A	341+39.5	48' RT		C 2		8	777.10	775.61 EX	774.21		

*LOCATE TO INTERCEPT EXIST. 8" PVC SS

PIPE TABLE STA. 337+00 TO STA. 342+25

PIPE NO.	LOCATION FROM STR #	LOCATION TO STR #	DESCRIPTION	DIA (IN)	L (FT)	S (%)	TRENCH BACKFILL	
							L (FT)	VOL (CY)
S509	NOT	USED						
S510	NOT	USED						
S511	511	512	SS 2 RCCP IV	12	49	1.00	49	6.5
S512	513	512	SS 1 RCCP IV	12	7	1.00	7	0.9
S513	512	518	SS 2 RCCP IV	15	200	1.00	200	24.2
S514	NOT	USED	"O" RING					
S515	NOT	USED						
S516	516	517	SS 2 RCCP IV	12	33	1.00	33	4.4
S517	517	518	SS 2 RCCP IV	12	26	1.00	26	3.4
S518	519	518	SS 1 RCCP IV	12	7	1.00	7	0.9
S519	518	520	SS 2 RCCP IV	18	100	1.00	100	10.5
S520	521	520	SS 1 RCCP IV	24	7	1.00	7	0.8
S521	522	521	SS 1 RCCP IV	24	11	1.00	11	3.3
S521A	522A	522	SS 1 DI CL 52	12	60	1.00	60	7.9



SCALE: 1" = 20'

ILLINOIS ROUTE 64

