

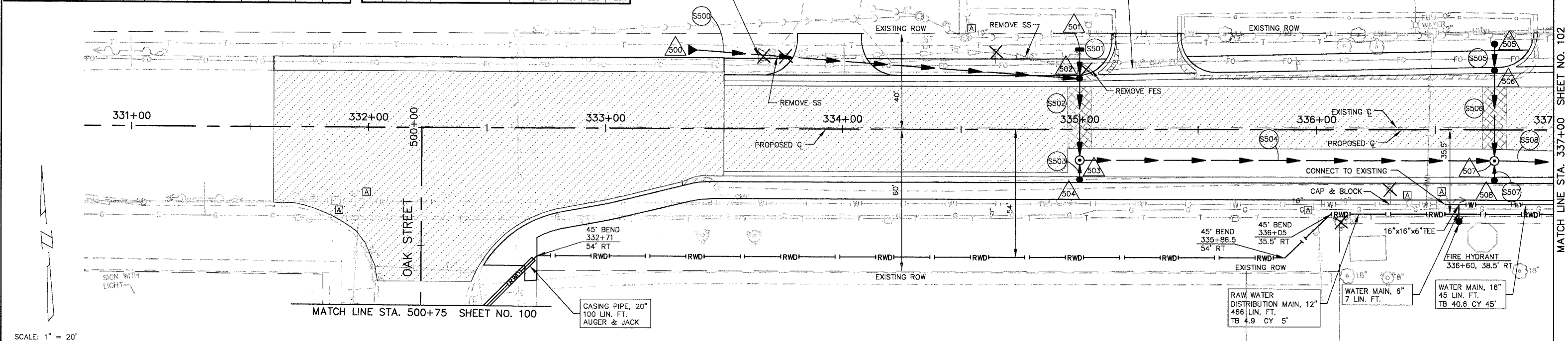
**DRAINAGE STRUCTURE TABLE STA. 331+00 TO STA. 337+00**

NO.	STA.	OFFSET	STRUCTURE TYPE/SIZE				FRAME & GRATE	RIM ELEV EP/FR	INVERT (N)	INVERT (S)	INVERT (E)	INVERT (W)
			MH	CB	INL	OTHER						
500	331+36	33' LT				PRC FES 12	8	784.70		783.00		784.70
501	335+00	33.5' LT			A 2		24	785.24	782.88	780.37		780.47
502	335+00	20.2' LT		A 4			1C	785.38	780.03	781.16	779.93	
503	335+00	13' RT	A 4				24	785.24	781.24			
504	335+00	20' RT		A 4			8	783.00		779.00		
505	336+75	37' LT		C 2			24	783.35	778.88	778.78		
506	336+75	23.7' LT		A 4			1C	783.56	778.41	779.34	778.08	778.16
507	336+75	13' RT	A 4				24	783.42	779.42			
508	336+75	20' RT		A 4								

**PIPE TABLE STA. 331+00 TO STA. 337+00**

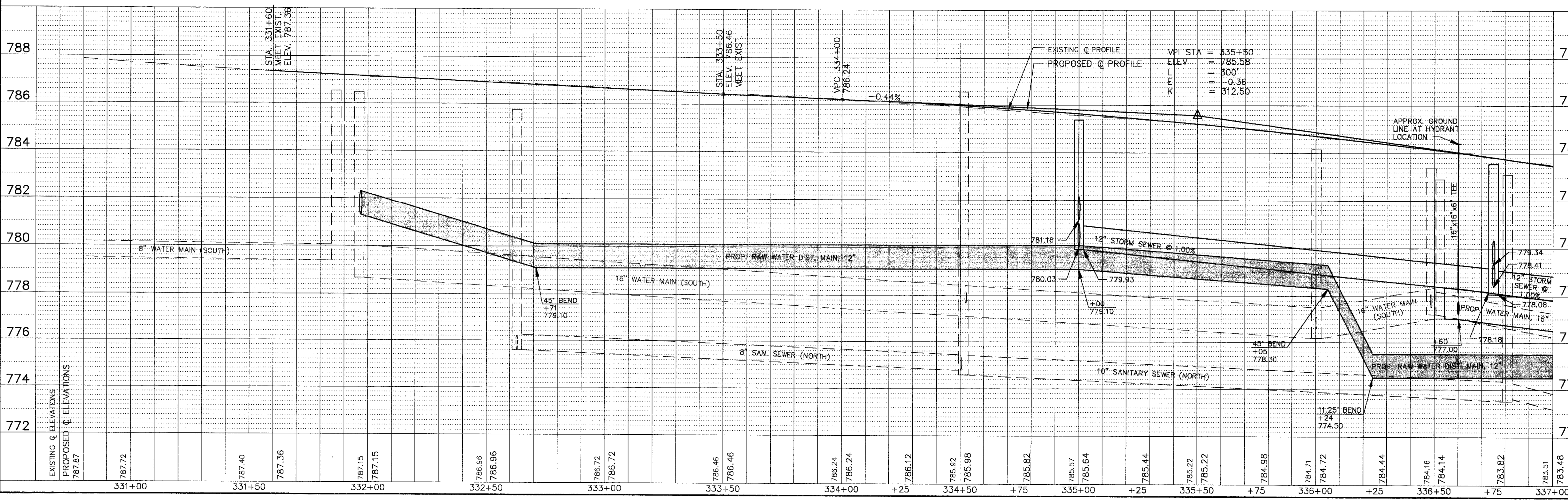
PIPE NO.	PIPE LOCATION		DESCRIPTION	DIA (IN)	L (FT)	S (%)	TRENCH BACKFILL	
	FROM STR #	TO STR #					L (FT)	VOL (CY)
S500	500	502	SS 2 RCCP IV	12	159	2.56	159	37.3
S501	501	502	SS 1 RCCP IV	12	12	1.00	10	1.3
S502	502	503	SS 2 RCCP IV	12	34	1.00	34	4.5
S503	504	503	SS 1 RCCP IV	12	8	1.00	8	1.1
S504	503	507	SS 2 RCCP IV	12	175	1.00	175	30.3
S505	505	506	SS 2 RCCP IV "O" RING	12	12	1.00	12	3.6
S506	506	507	SS 2 RCCP IV	12	37	1.00	37	4.9
S507	508	507	SS 2 RCCP IV	12	8	1.00	8	1.1
S508	507	512	SS 2 RCCP IV	12	225	1.00	225	29.7

F.A.P. ROUTE	99-00243-00-PV	COUNTY	KANE	TOTAL SH.	268
CONTRACT NO.	83782	PROJECT	F-0336/00		



SCALE: 1" = 20'

**ILLINOIS ROUTE 64**



MATCH LINE STA. 337+00 SHEET NO. 102

EXISTING & PROPOSED ELEVATIONS: 787.87, 787.72, 787.40, 787.36, 787.15, 787.15, 786.96, 786.96, 786.72, 786.72, 786.46, 786.46, 786.24, 786.24, 786.12, 785.92, 785.98, 785.82, 785.57, 785.64, 785.44, 785.22, 785.22, 784.98, 784.71, 784.72, 784.44, 784.16, 784.14, 783.82, 783.51, 783.48