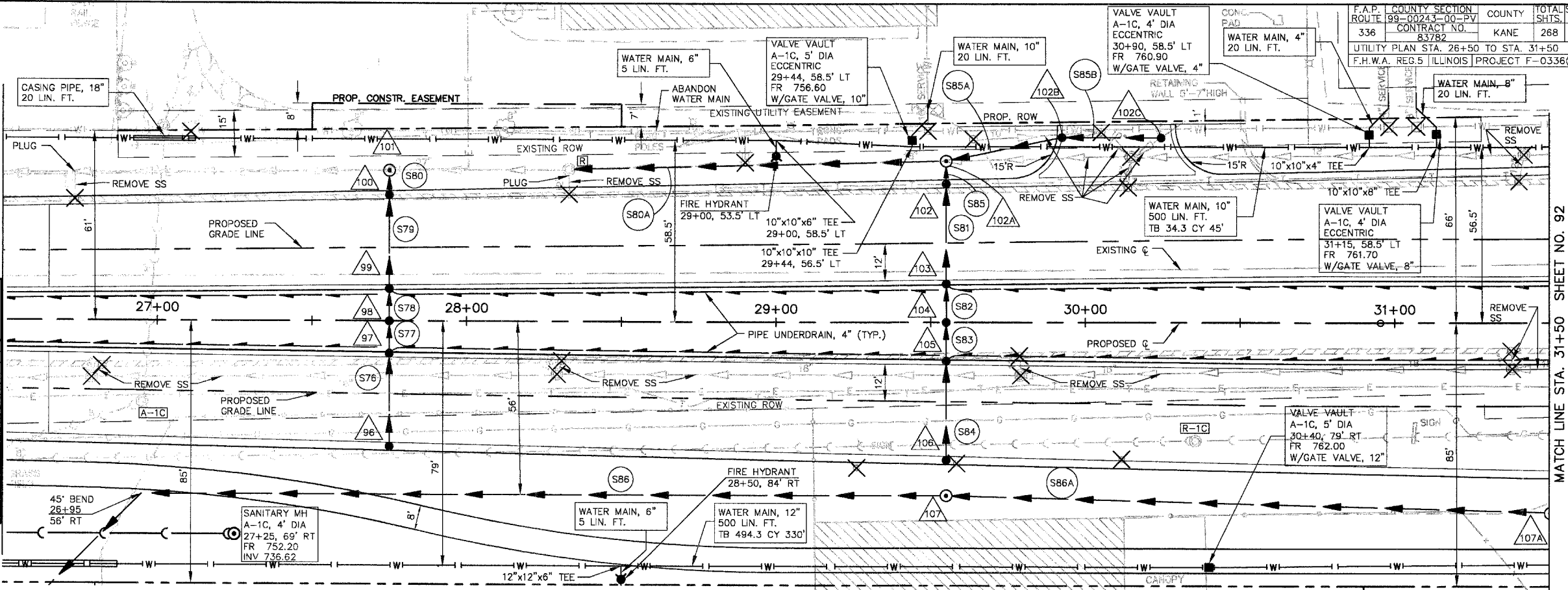


**RANDALL ROAD  
 Q CURVE #2**

RADIUS = 9950.00'  
 ARC LENGTH = 232.66'  
 CHORD LENGTH = 232.65'  
 TANGENT LENGTH = 116.33'  
 DEGREE OF CURVE = 00°-34'-33"  
 MID ORDINATE = 0.68'  
 EXTERNAL SECANT = 0.68'  
 INCLUDED ANGLE = 01°-20'-23"  
 PC = 30+95.36  
 PT = 33+28.01

MATCH LINE STA. 26+50  
 SHEET NO. 89



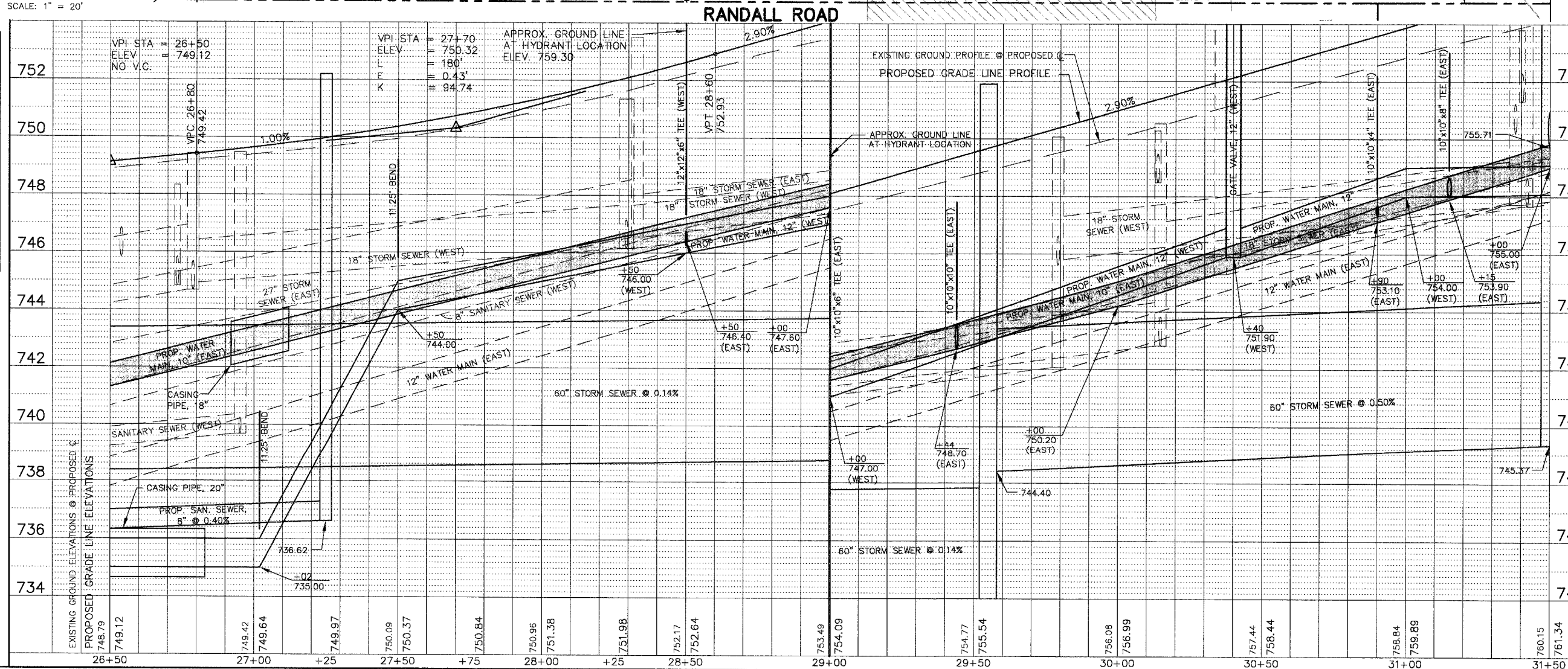
**DRAINAGE STRUCTURE TABLE STA. 26+50 TO STA. 31+50**

NO.	STA.	OFFSET	STRUCTURE TYPE/SIZE				FRAME & GRATE	RIM ELEV EPI/FR	INVERT (N)	INVERT (S)	INVERT (E)	INVERT (W)
			MH	CB	INL	OTHER						
96	27+75	39.33 RT	A 4			24	750.59			747.59		
97	27+75	11.67 RT	A 4			11V	750.66			746.39	747.30	
98	27+75	CL	A 4			8	750.90			746.18	746.28	
99	27+75	11.67 LT	A 4			11V	750.66			745.97	746.07	
100	27+75	39.33 LT	A 4			24	750.59			745.58	745.68	
101	27+75	45.50 LT	A 5			1C	752.40	745.38 EX	745.38 EX		745.50	
102	29+55	43.33 LT	A 4			24	755.39			750.11	750.21	
102A	29+55	52 LT	A 4			1C	755.80	748.07	751.86			
102B	29+55	59.5 LT	C 2			11V	756.20	752.24	752.24			
102C	29+55	59.5 LT	C 2			1P	756.90	752.40	752.50 EX			
103	29+55	13.67 LT	A 4			11V	755.50			750.52	750.62	
104	29+55	CL	A 4			8	755.88			750.75	750.85	
105	29+55	13.67 RT	A 4			11V	755.50			750.98	751.99	
106	29+55	43.33 RT	A 4			24	755.39			752.30		
107	29+55	56 RT	A 7			3' SUMP	1C	757.90	739.27	744.40		
107A	31+50	61.5 RT	A 7			3' SUMP	1C	781.60	745.37	750.37	755.71	

\*PLACE STRUCTURE TO INTERCEPT EXISTING 8" STORM SEWER

**PIPE TABLE STA. 26+50 TO STA. 31+50**

PIPE NO.	LOCATION FROM STR # TO STR #	DESCRIPTION	DIA (IN)	L (FT)	S (%)	TRENCH BACKFILL		
						L (FT)	VOL (CY)	
S76	96	97	SS 1 RCCP IV	12	29	1.00	29	3.8
S77	97	98	SS 2 RCCP IV	12	11	1.00	2	0.4
S78	98	99	SS 2 RCCP IV	12	11	1.00	2	0.5
S79	99	100	SS 2 RCCP IV	12	29	1.00	29	6.8
S80	100	101	SS 2 RCCP IV	12	8	1.00	2	1.7
S80A	102A	EX	SS 2 DI CL 52	18	122	1.25		
S81	103	102	SS 2 RCCP IV	12	31	1.00	31	9.3
S82	104	103	SS 2 RCCP IV	12	13	1.00	2	0.5
S83	105	104	SS 2 RCCP IV	12	13	1.00	2	0.5
S84	106	105	SS 1 RCCP IV	12	31	1.00	31	4.1
S85	102	102A	SS 2 RCCP IV	12	7	1.00	2	1.5
S85A	102B	102A	SS 1 DI CL 52	12	38	1.00	2	0.5
S85B	102C	102B	SS 1 DI CL 52	12	32	0.50	32	8.6
S86	107	POND	SS3 RCCP IV PRESSURE PIPE	60	418	0.14	260	1233.2
S86A	107A	107	SS 2 RCCP IV	60	195	0.50	195	677.8



SCALE: 1" = 20'

**RANDALL ROAD**

MATCH LINE STA. 31+50  
 SHEET NO. 92