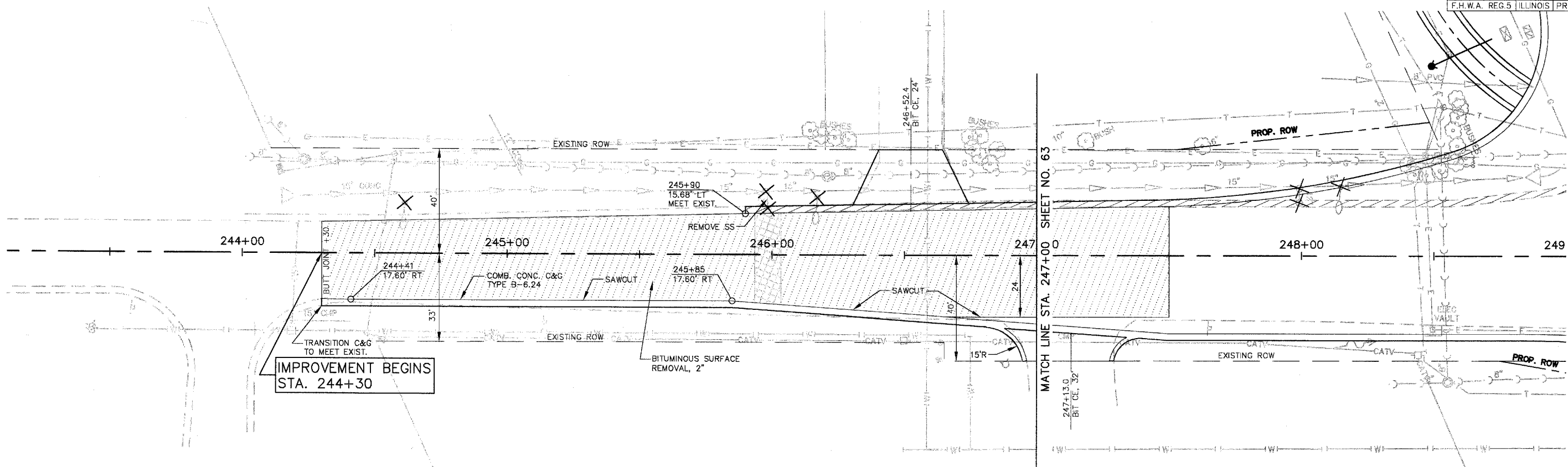


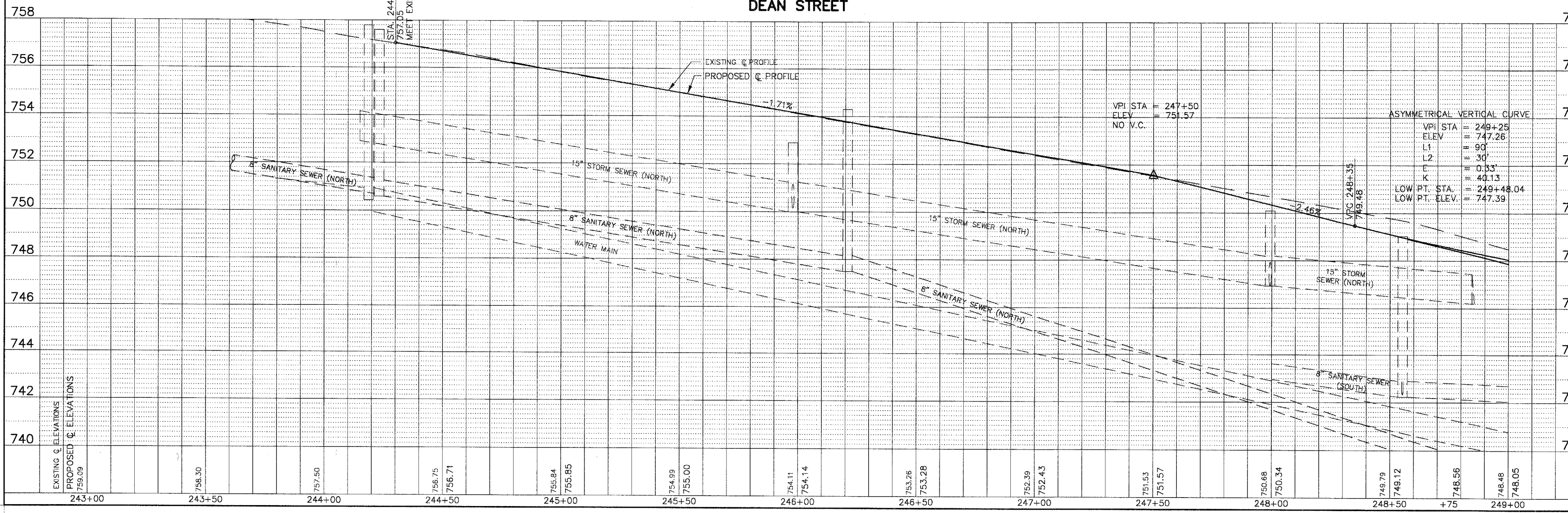
SCALE: 1" = 20'



IMPROVEMENT BEGINS STA. 244+30

MATCH LINE STA. 247+00 SHEET NO. 63

DEAN STREET



VPI STA = 247+50
 ELEV = 751.57
 NO V.C.

ASYMMETRICAL VERTICAL CURVE
 VPI STA = 249+25
 ELEV = 747.26
 L1 = 90'
 L2 = 30'
 E = 0.53
 K = 40.13
 LOW PT. STA = 249+48.04
 LOW PT. ELEV. = 747.59

STATION	EXISTING C ELEVATIONS	PROPOSED C ELEVATIONS
243+00	759.09	759.09
243+50	758.30	758.30
244+00	757.50	757.50
244+50	756.75	756.71
245+00	755.84	755.85
245+50	754.99	755.00
246+00	754.11	754.14
246+50	753.28	753.28
247+00	752.39	752.43
247+50	751.53	751.57
248+00	750.68	750.34
248+50	749.79	749.12
+75	748.56	748.56
249+00	748.48	748.05