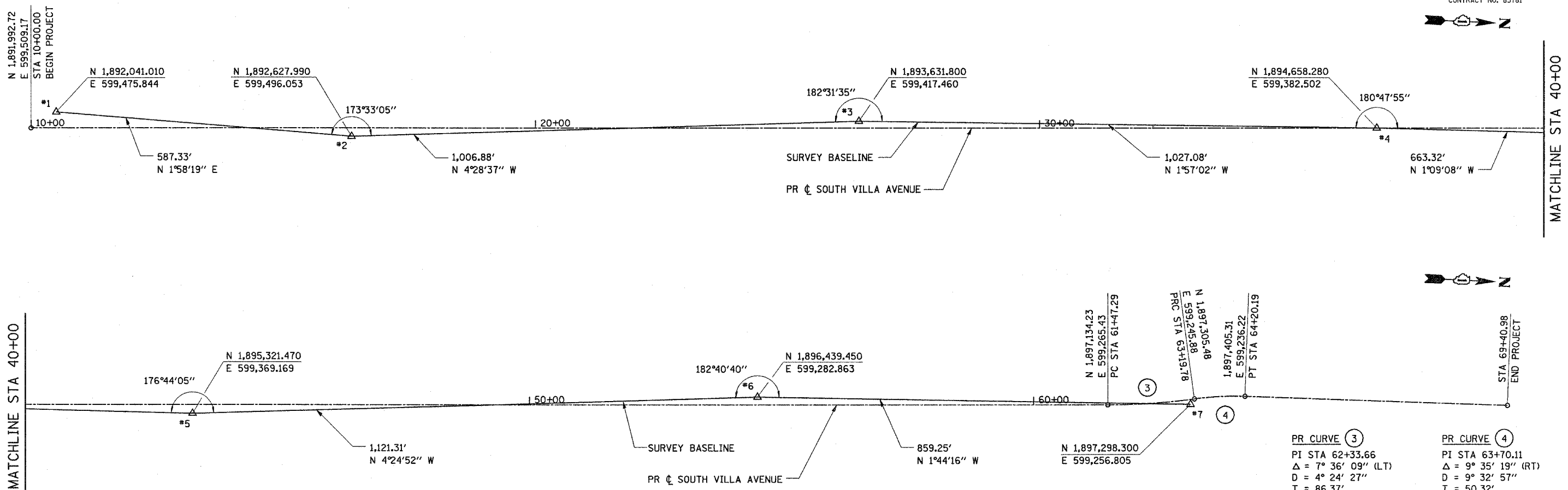


F.A.U. RTE.	SECTION	COUNTY	TOTAL SHEETS	SHEET NO.
2652	00-00069-00-PV	DUPAGE	146	14
STA. 10+70.70		TO STA. 66+16.00		
FED. ROAD DIST. NO.	ILLINOIS	FED. AID PROJECT		
CONTRACT NO. 83781				

PLAN	DATE
BY	
CHECKED	
DESIGNED	
NOTED	
NO.	

PROFILE	DATE
BY	
CHECKED	
DESIGNED	
NOTED	
NO.	



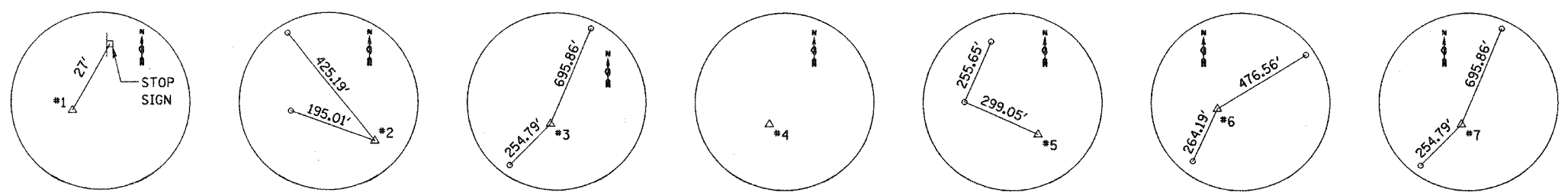
PR CURVE (3) PI STA 62+33.66 $\Delta = 7^\circ 36' 09''$ (LT) $D = 4^\circ 24' 27''$ $T = 86.37'$ $R = 1,300.00'$ $L = 172.49'$ $E = 2.87'$ NO SUPERELEVATION PC STA 61+47.29 PT STA 63+19.78	PR CURVE (4) PI STA 63+70.11 $\Delta = 9^\circ 35' 19''$ (RT) $D = 9^\circ 32' 57''$ $T = 50.32'$ $R = 600.00'$ $L = 100.41'$ $E = 2.11'$ NO SUPERELEVATION PC STA 63+19.78 PT STA 64+20.19
--	--

PROJECT BENCHMARKS

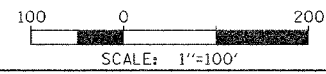
VILLAGE OF VILLA PARK
 BENCHMARK NO. 10, COUNTY
 BENCHMARK NO. FEMA RM3

VILLA PARK FLOOD INSURANCE
 RATE MAP REFERENCE MARK #3
 CHISSELED CROSS IN TOP OF NORTHWEST
 CONCRETE WING WALL OF THE VILLA AVENUE
 BRIDGE OVER SUGAR CREEK.
 ELEVATION = 663.67

NOTE:
 TO CONVERT PROJECT ELEVATIONS TO NGVD 29 DATUM, ADD 0.10'.



- #1**
 STA 10+49.82, 31.00' LT
 CHISSELED CROSS IN
 TOP OF CURB 27'
 SOUTH OF STOP
 SIGN NEAR
 ROOSEVELT STREET
- #2**
 STA 16+35.18, 16.98' RT
 PK NAIL
- #3**
 STA 26+41.59, 13.99' LT
 PK NAIL IN FRONT OF
 HOUSE NO. 1330
- #4**
 STA 36+68.57, 0.30' RT
 RR SPIKE NEAR
 HARRISON STREET
 AT CENTERLINE
 INTERSECTION
- #5**
 STA 43+31.65, 17.78' RT
 PK NAIL NEAR
 VAN BUREN STREET
- #6**
 STA 54+52.46, 15.49' LT
 CHISSELED CROSS IN
 CENTER OF SIDEWALK
 NEAR TERRY LANE
- #7**
 STA 63+10.82, 9.50' RT
 CHISSELED CROSS IN
 TOP OF CURB NEAR
 MADISON STREET



REVISIONS	
NAME	DATE

VILLAGE OF VILLA PARK, ILLINOIS

**SOUTH VILLA AVENUE
 ALIGNMENT, TIES,
 AND BENCHMARKS**

SCALE: 1"=100'
 DATE: 11-NOV-2004

DRAWN BY: E.D.
 CHECKED BY: J.T.G.