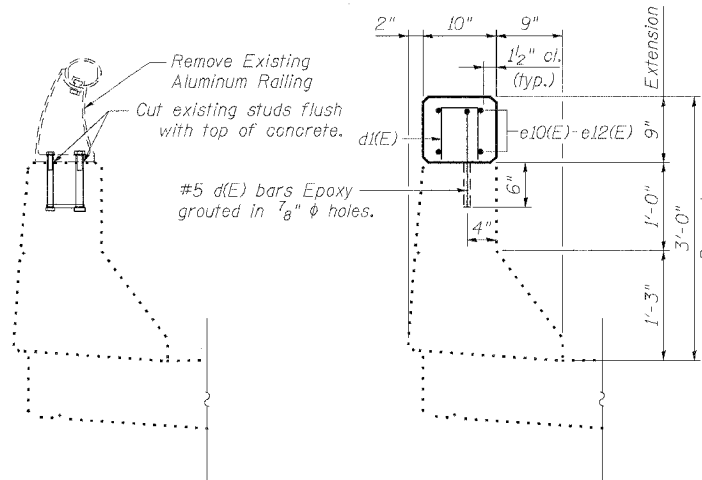


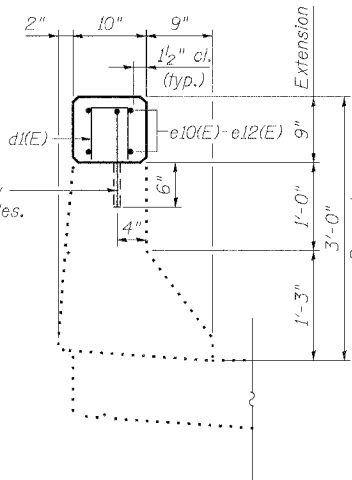
STATE OF ILLINOIS
DEPARTMENT OF TRANSPORTATION

SHEET 4
OF 6

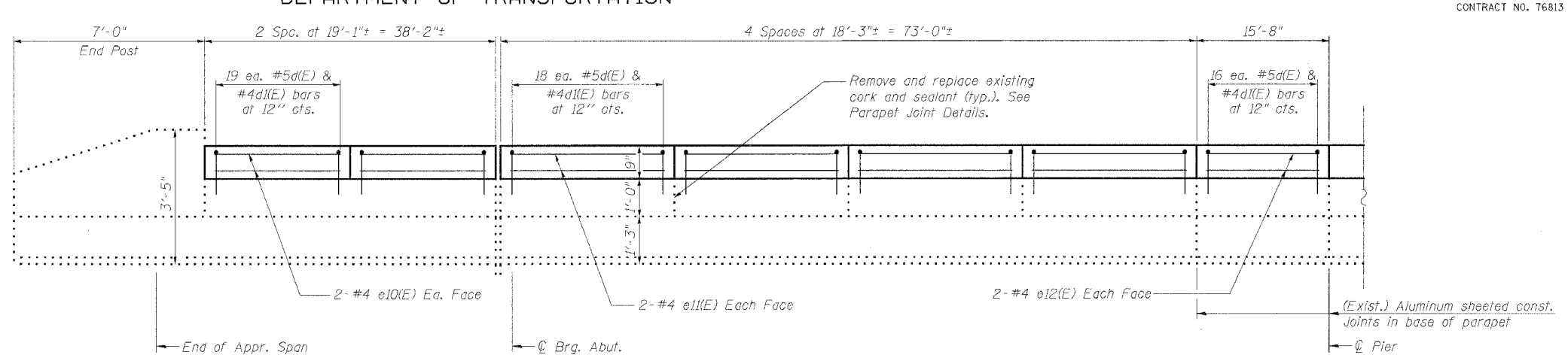
F.A.I. RTE.	SECTION	COUNTY	TOTAL SHEETS	SHEET NO.
64	82-7RS-1, 82-7HB-1, 21	ST. CLAIR	89	64
FED. ROAD DIST. NO.	ILLINOIS	FED. AID PROJECT		
CONTRACT NO. T6813				



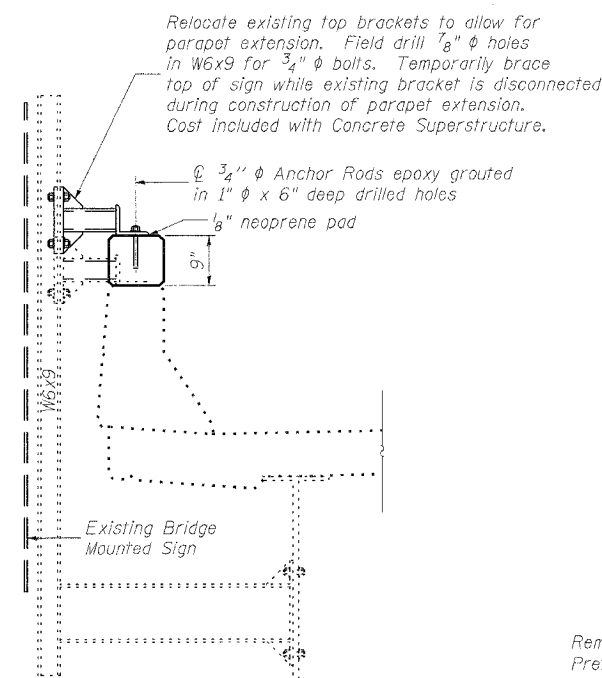
BRIDGE RAIL REMOVAL



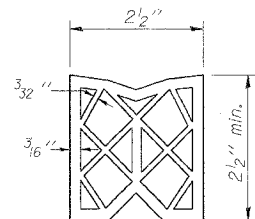
SECTION THRU PARAPET



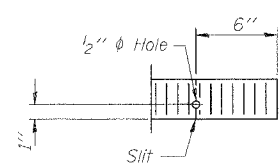
INSIDE ELEVATION OF PARAPET



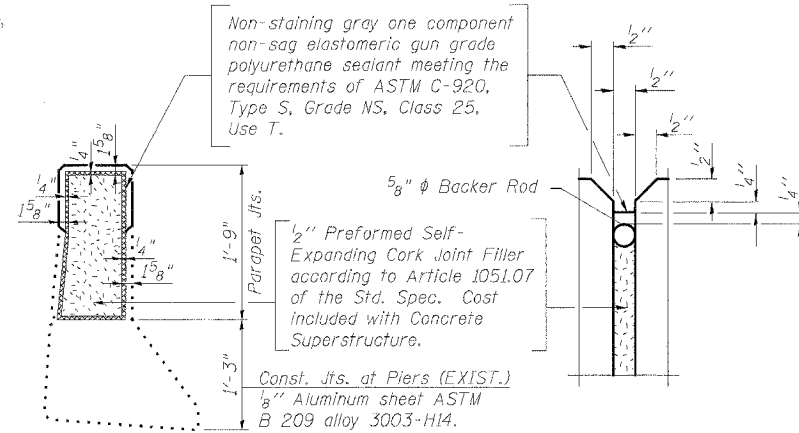
BRIDGE MOUNTED SIGN



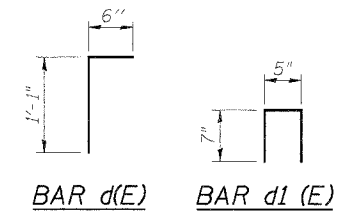
PREFORMED JOINT SEAL



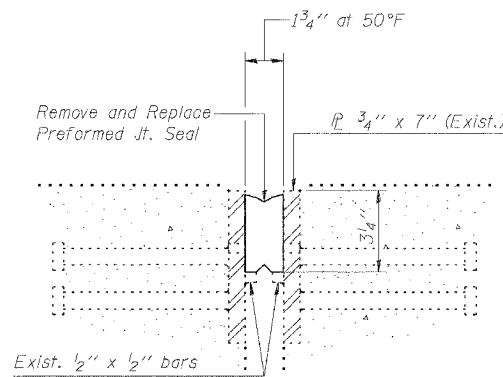
END OF SEAL CUT-OUT



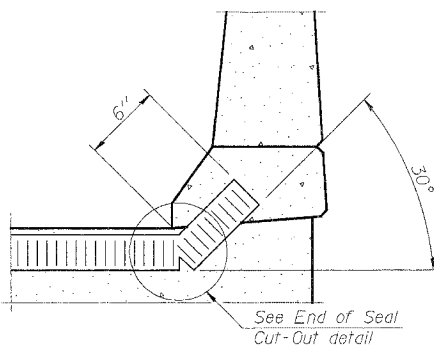
PARAPET JOINT DETAILS



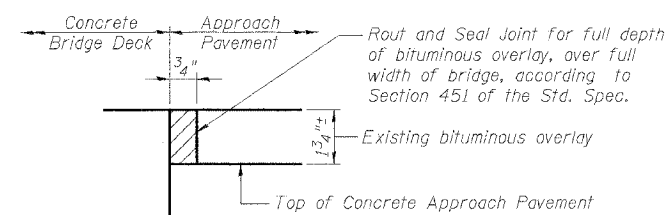
BAR d(E) BAR d1(E)



SECTION THRU EXPANSION JOINT



TYPICAL END TREATMENT



APPROACH PAVEMENT JOINT

SUPERSTRUCTURE
BILL OF MATERIAL

Bar	No.	Size	Length	Shape	
d(E)	1008	#5	1'-7"	L	
d1(E)	1008	#4	1'-7"	Π	
e10(E)	64	#4	18'-9"	—	
e11(E)	128	#4	17'-11"	—	
e12(E)	32	#4	15'-4"	—	
Reinforcement Bars, Epoxy Coated				Pound	5400
Concrete Superstructure				Cu. Yd.	22.6
Bridge Rail Removal				Foot	1016
Preformed Joint Seal 2 1/2"				Foot	210
Formed Concrete Repair (Depth = < 5")				Sq. Ft.	27
Concrete Sealer				Sq. Yd.	3430
Crack Routing (Pavement)				Foot	220
Crack Filling				Pound	200

Reinforcement Bars designated (E) shall be epoxy coated.

JD Johnson, Depp & Quisenberry
CONSULTING ENGINEERS
Springfield, Illinois

DESIGNED: CDB	DRAWN: SJS
CHECKED: DCD	CHECKED: CDB/DCD

SUPERSTRUCTURE
IL 158 (SB & NB) OVER
INTERSTATE 64
F.A.I. 64 SEC. 82-7RS-1, 82-7HB-1, 21
ST. CLAIR COUNTY
STATION 913+25.94
STRUCTURE NO. 082-0183 & -0184

FILE: F:\110132_IL-DBVW#2 I-64 Bridge Repairs\4-SN0183_4-IL158\04superstr.dgn

USER: P. Roy

DATE: 03/28/2005 - 15:33:52