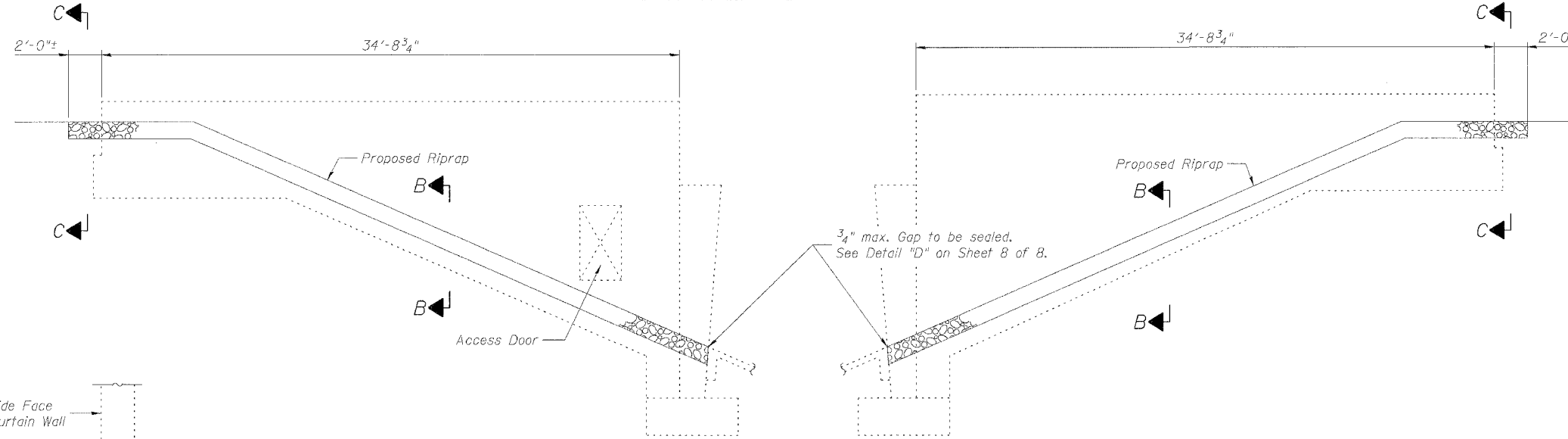


STATE OF ILLINOIS
DEPARTMENT OF TRANSPORTATION

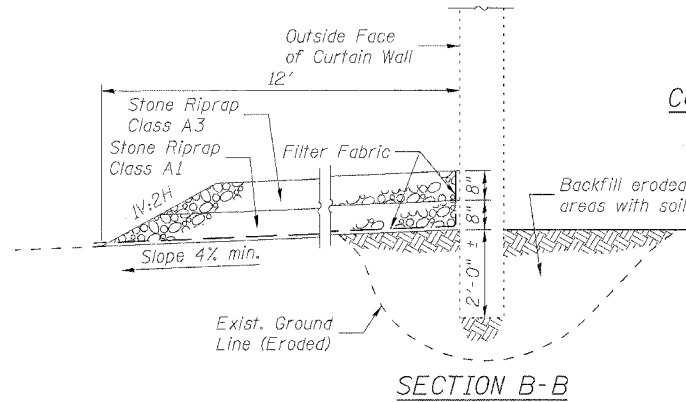
SHEET 7
OF 8

F.A.I. RTE.	SECTION	COUNTY	TOTAL SHEETS	SHEET NO.
64	82-7RS-1, 82-7HB-1, 21	ST. CLAIR	89	76
FED. ROAD DIST. NO.	ILLINOIS	FED. AID PROJECT		
CONTRACT NO. 76813				

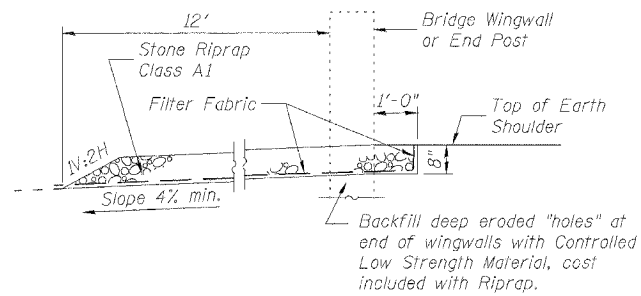


CURTAIN WALL ELEVATION
(Facing East)

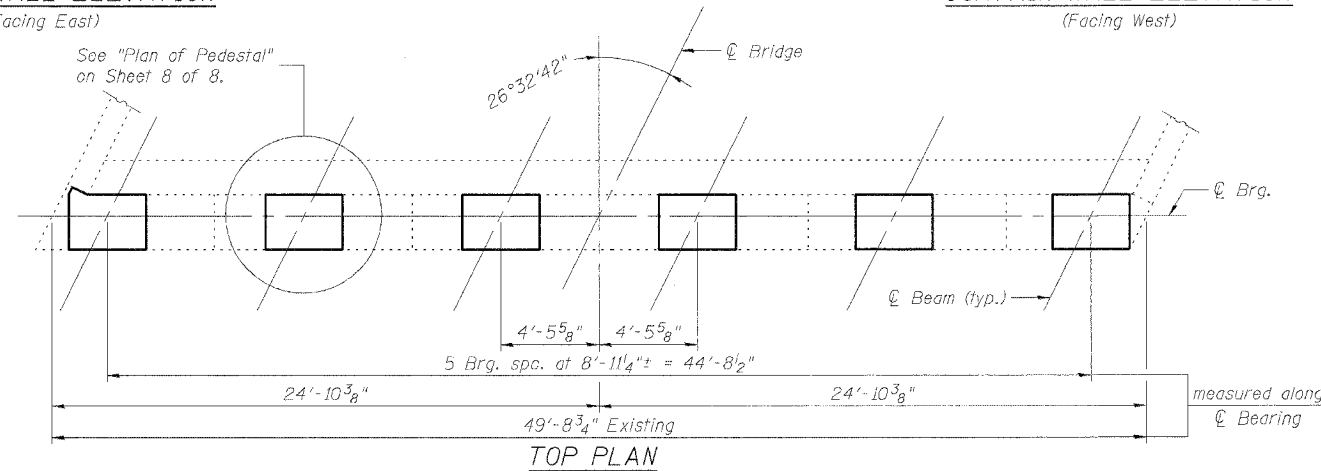
CURTAIN WALL ELEVATION
(Facing West)



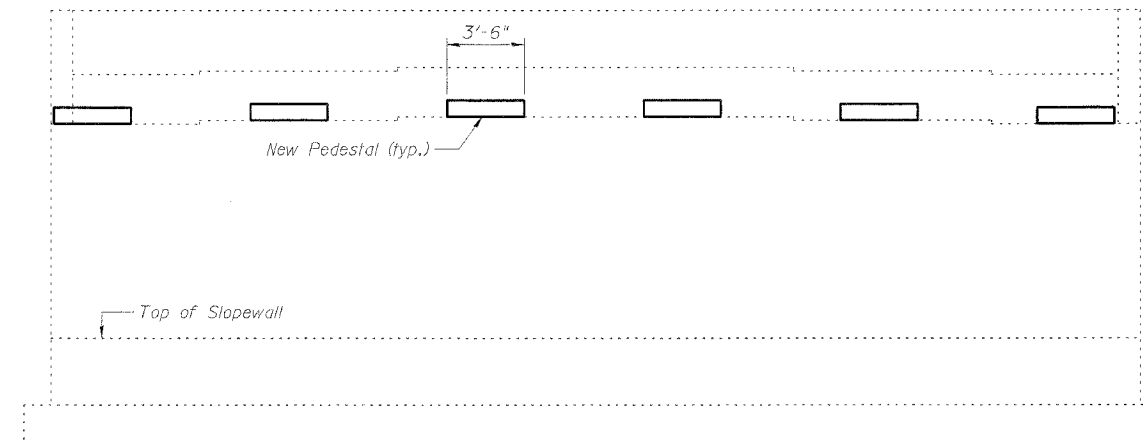
SECTION B-B



SECTION C-C
(at End of Wingwall)



TOP PLAN



ELEVATION
(Facing North)

BILL OF MATERIAL

Bar	No.	Size	Length	Shape
h2(E)	30	#5	3'-2"	
h4(E)	36	#5	2'-2"	
v1(E)	36	#5	1'-4"	
Concrete Structures				
			Cu. Yd.	1.4
Reinforcement Bars, Epoxy Coated				
			Pound	240
Bridge Seat Sealer				
			Sq. Ft.	124
Silicone Joint Sealer				
			Foot	50
Stone Riprap, Class A1				
			Ton	32
Stone Riprap, Class A3				
			Ton	29
Filter Fabric for use with Riprap				
			Sq. Yd.	115

Reinforcement Bars designated (E) shall be epoxy coated.

EROSION REPAIR NOTES:

Prior to backfilling eroded areas, all existing gravel and debris shall be removed from the eroded areas and along the full length of the curtain walls for a 12 foot width on the outside face.

Backfill along curtain walls shall use soil material similar to the adjacent soil, and shall be mechanically compacted to provide a uniform grade from top to bottom of slope. Porous materials shall not be used for backfill. Cost of backfill and gravel/debris removal shall be included with Riprap.

Filter fabric material and installation shall be according to Section 282 (use tables for Gradation 4 & 5).

DESIGNED:	CDB	DRAWN:	P. Ray
CHECKED:	DCD	CHECKED:	CDB/DCD

NORTH ABUTMENT
N. MAIN STREET (FAS 844) OVER
INTERSTATE 64
F.A.I. 64 SEC. 82-7RS-1, 82-7HB-1, 21
ST. CLAIR COUNTY
STATION 883+53.16
STRUCTURE NO. 082-0182