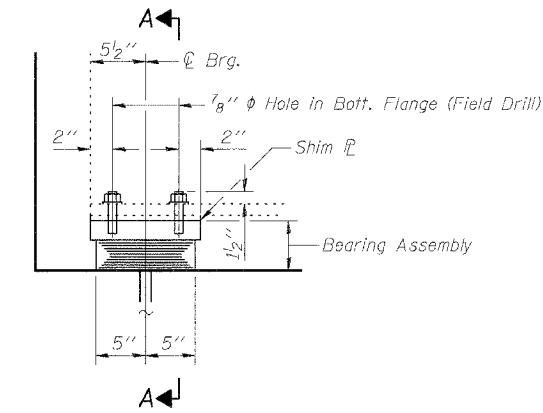


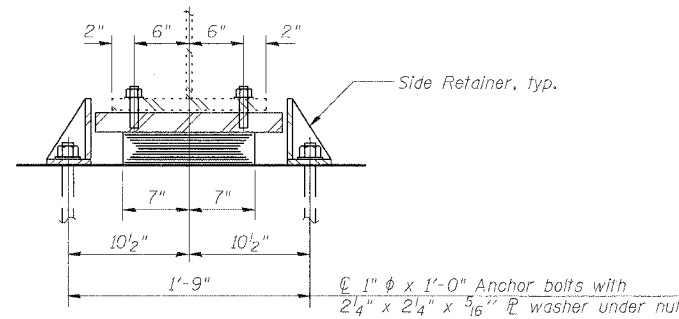
STATE OF ILLINOIS
DEPARTMENT OF TRANSPORTATION

SHEET 4
OF 8

F.A.I. RTE.	SECTION	COUNTY	TOTAL SHEETS	SHEET NO.
64	82-7RS-1, 82-7HB-1, 21	ST. CLAIR	89	73
FED. ROAD DIST. NO.	ILLINOIS FED. AID PROJECT		CONTRACT NO. 76813	

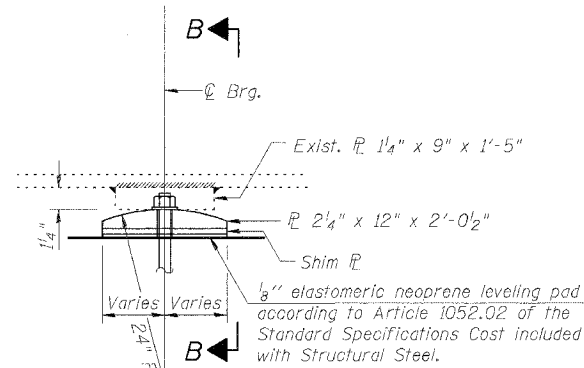


ELEVATION AT ABUT.



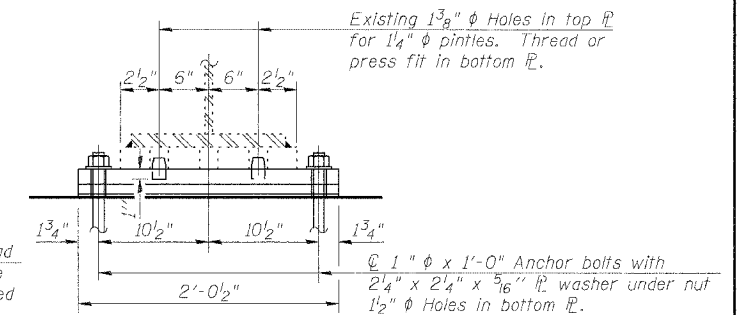
SECTION A-A

TYPE I ELASTOMERIC EXP. BRG.

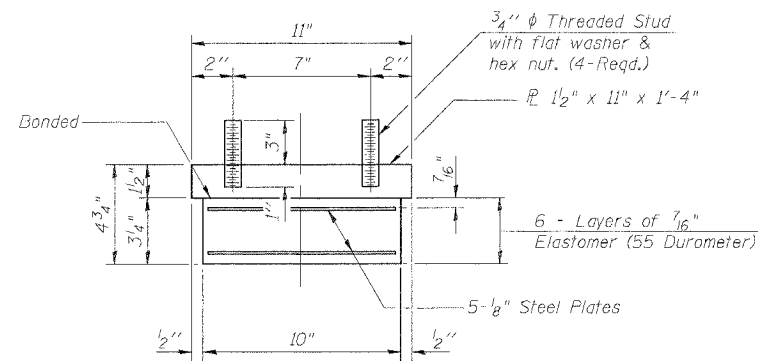


ELEVATION AT PIER

FIXED BEARING

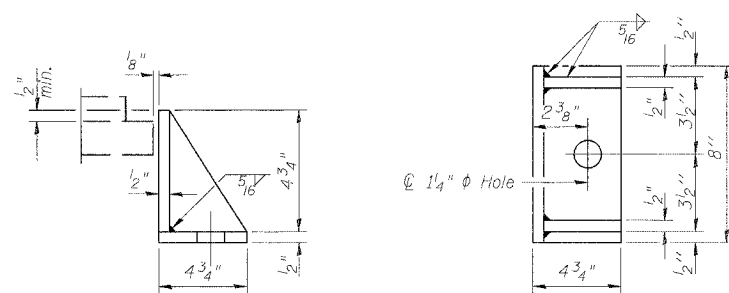


SECTION B-B



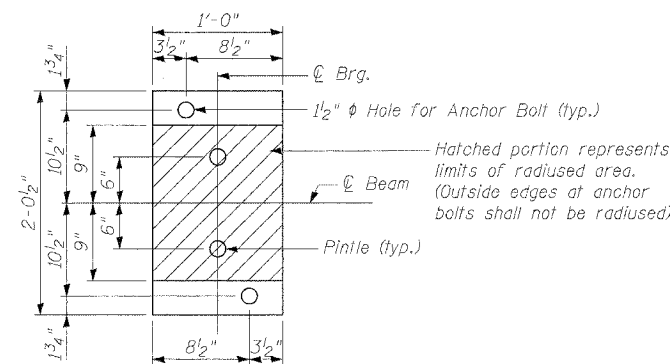
BEARING ASSEMBLY

Note:
Shim plates shall not be placed under Bearing Assembly.

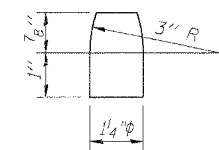


SIDE RETAINER

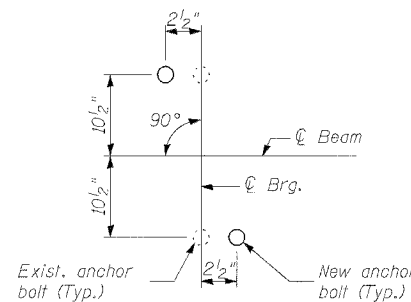
Equivalent rolled angle with stiffeners will be allowed in lieu of welded plates. Weight included with Structural Steel.



BOTTOM PLATE-PLAN



PINTLE



ANCHOR BOLT LAYOUT AT ABUTMENTS AND PIER

		Abuts.	Pier
R (DL)	(K)	55.1	194.3
R (LL)	(K)	46.4	74.4
R (Imp)	(K)	10.4	16.7
R (Total)	(K)	111.9	285.4
Minimum Jack Capacity	(Tons)	50	150

NOTES:

See Sheet 1 of 8 for Jacking notes.

See Sheet 5 of 8 for Anchor Bolt installation.

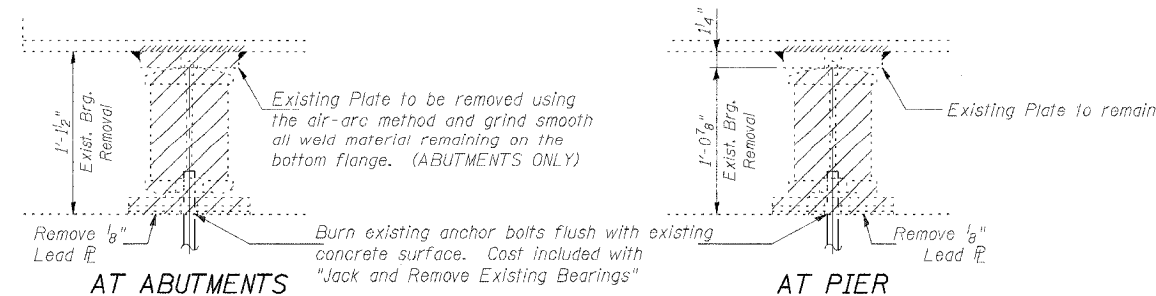
Prior to ordering any material, the Contractor shall verify in the field all existing bearing height and shim thickness dimensions.

Side Retainers, Shim Plates, Connection Bolts and Anchor Bolts are included with "F & E Structural Steel."

The structural steel bearing plates for the Expansion and Fixed Bearings shall conform to the requirements of AASHTO M 270 Grade 50.

BILL OF MATERIAL

Item	Unit	Total
Jack and Remove Existing Bearings	Each	18
Elastomeric Bearing Assembly Type I	Each	12
Furnishing and Erecting Structural Steel	Pound	1560



AT ABUTMENTS

AT PIER

EXISTING BEARING REMOVAL DETAIL

BEARINGS
N. MAIN STREET (FAS 844) OVER
INTERSTATE 64
F.A.I. 64 SEC. 82-7RS-1, 82-7HB-1, 21
ST. CLAIR COUNTY
STATION 883+53.16
STRUCTURE NO. 082-0182

DESIGNED: CDB	DRAWN: SJS
CHECKED: DCD	CHECKED: CDB/DCD

I-2-E1

10-22-04

FILE: F:\VIC32_IL-DBV\2 I-64 Bridge Repair\3-S\082-klm5+04bearings.dgn

USER: P. Roy

DATE: 03/28/2005 10:28:42