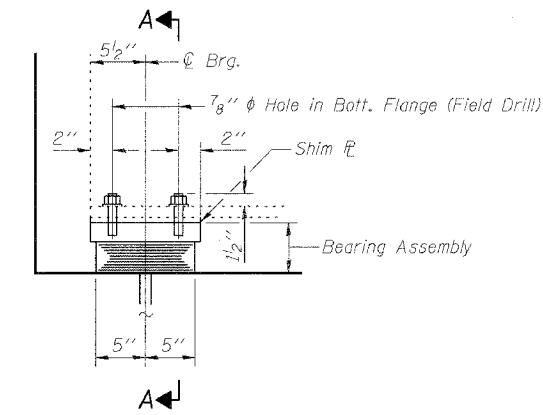


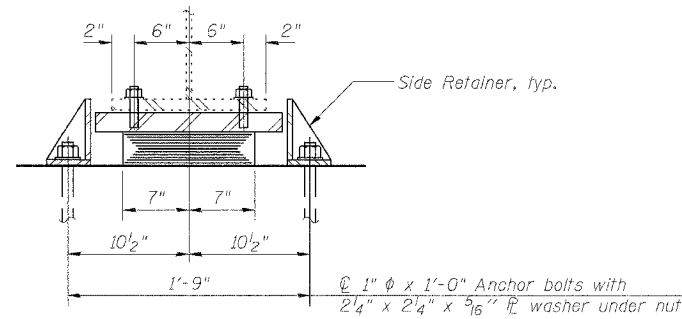
STATE OF ILLINOIS
DEPARTMENT OF TRANSPORTATION

SHEET 4
OF 8

F.A.I. RTE.	SECTION	COUNTY	TOTAL SHEETS	SHEET NO.
64	82-7RS-1, 82-7HB-1, 2I	ST. CLAIR	89	62
FED. ROAD DIST. NO.	ILLINOIS FED. AID PROJECT		CONTRACT NO. 76813	

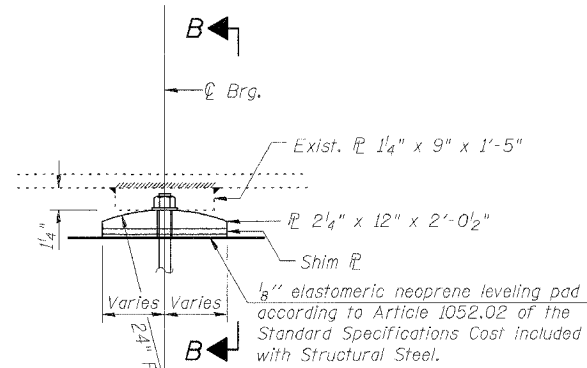


ELEVATION AT ABUT.



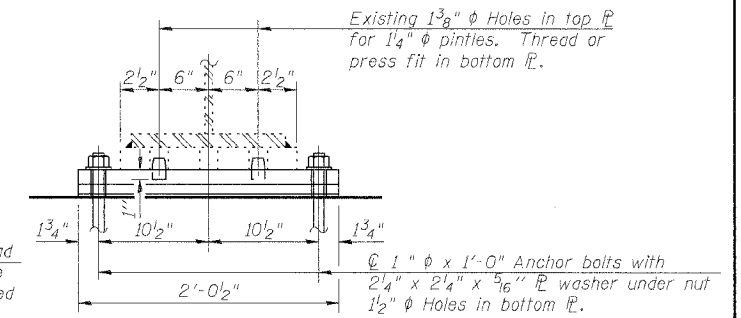
SECTION A-A

TYPE I ELASTOMERIC EXP. BRG.

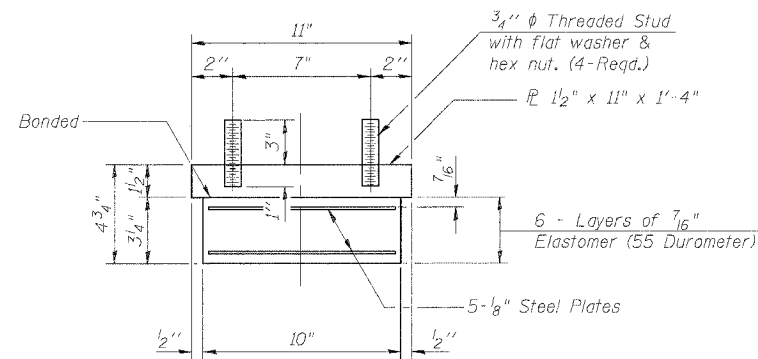


ELEVATION AT PIER

FIXED BEARING

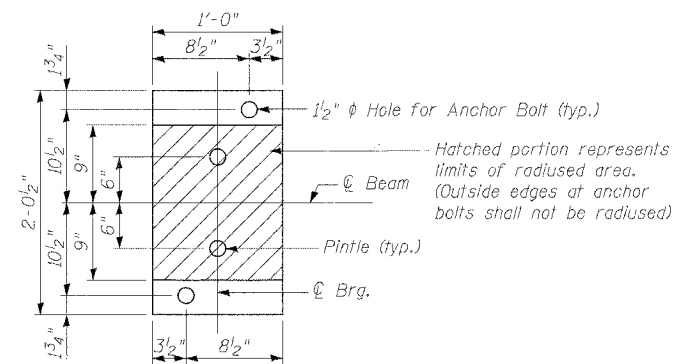


SECTION B-B

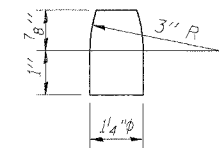


BEARING ASSEMBLY

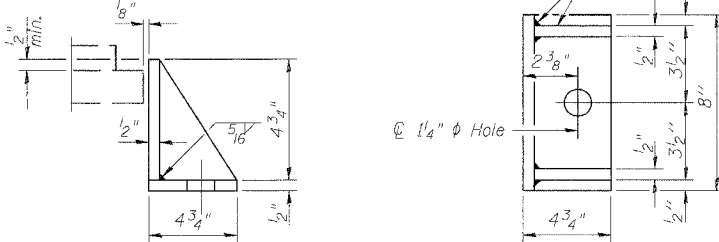
Note:
Shim plates shall not be placed under Bearing Assembly.



BOTTOM PLATE-PLAN

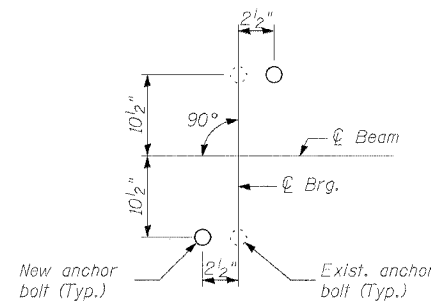


PINTLE



SIDE RETAINER

Equivalent rolled angle with stiffeners will be allowed in lieu of welded plates. Weight included with Structural Steel.



ANCHOR BOLT LAYOUT AT ABUTMENTS AND PIER

	Abuts.	Pier
R (DL)	(K)	53.9
R (LL)	(K)	46.3
R (Imp)	(K)	10.5
R (Total)	(K)	279.9
Minimum Jack Capacity (Tons)	50	150

NOTES:

See Sheet 1 of 8 for Jacking notes.

See Sheet 5 of 8 for Anchor Bolt installation.

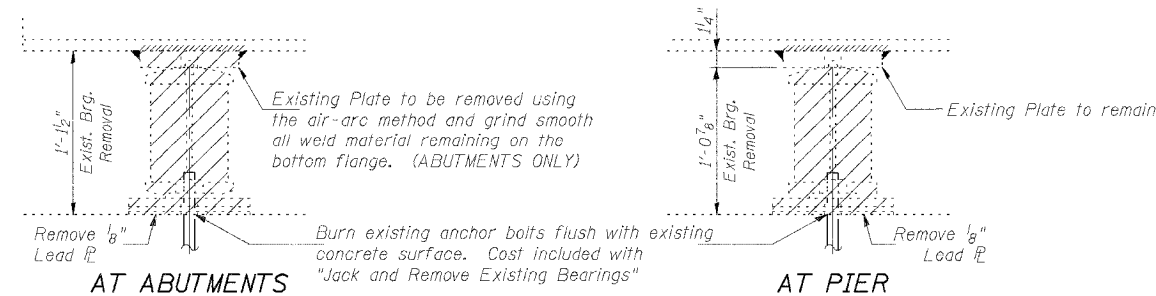
Prior to ordering any material, the Contractor shall verify in the field all existing bearing height and shim thickness dimensions.

Side Retainers, Shim Plates, Connection Bolts and Anchor Bolts are included with "F & E Structural Steel."

The structural steel bearing plates for the Expansion and Fixed Bearings shall conform to the requirements of AASHTO M 270 Grade 50.

BILL OF MATERIAL

Item	Unit	Total
Jack and Remove Existing Bearings	Each	18
Elastomeric Bearing Assembly Type I	Each	12
Furnishing and Erecting Structural Steel	Pound	1560



EXISTING BEARING REMOVAL DETAIL

DESIGNED: CDB	DRAWN: SJS
CHECKED: DCD	CHECKED: CDB/DCD

I-2-E1

10-22-04

BEARINGS
S. LINCOLN AVE. (FAS 843) OVER
INTERSTATE 64
F.A.I. 64 SEC. 82-7RS-1, 82-7HB-1, 2I
ST. CLAIR COUNTY
STATION 816+85.18
STRUCTURE NO. 082-0181

FILE: F:\M032 IL-DBVW#2 I-64 Bridge Repair\2-S\081-L\incor\ave\04bear\frncs.dgn

USER: P. ROY

DATE: 03/28/2005 12:18:40