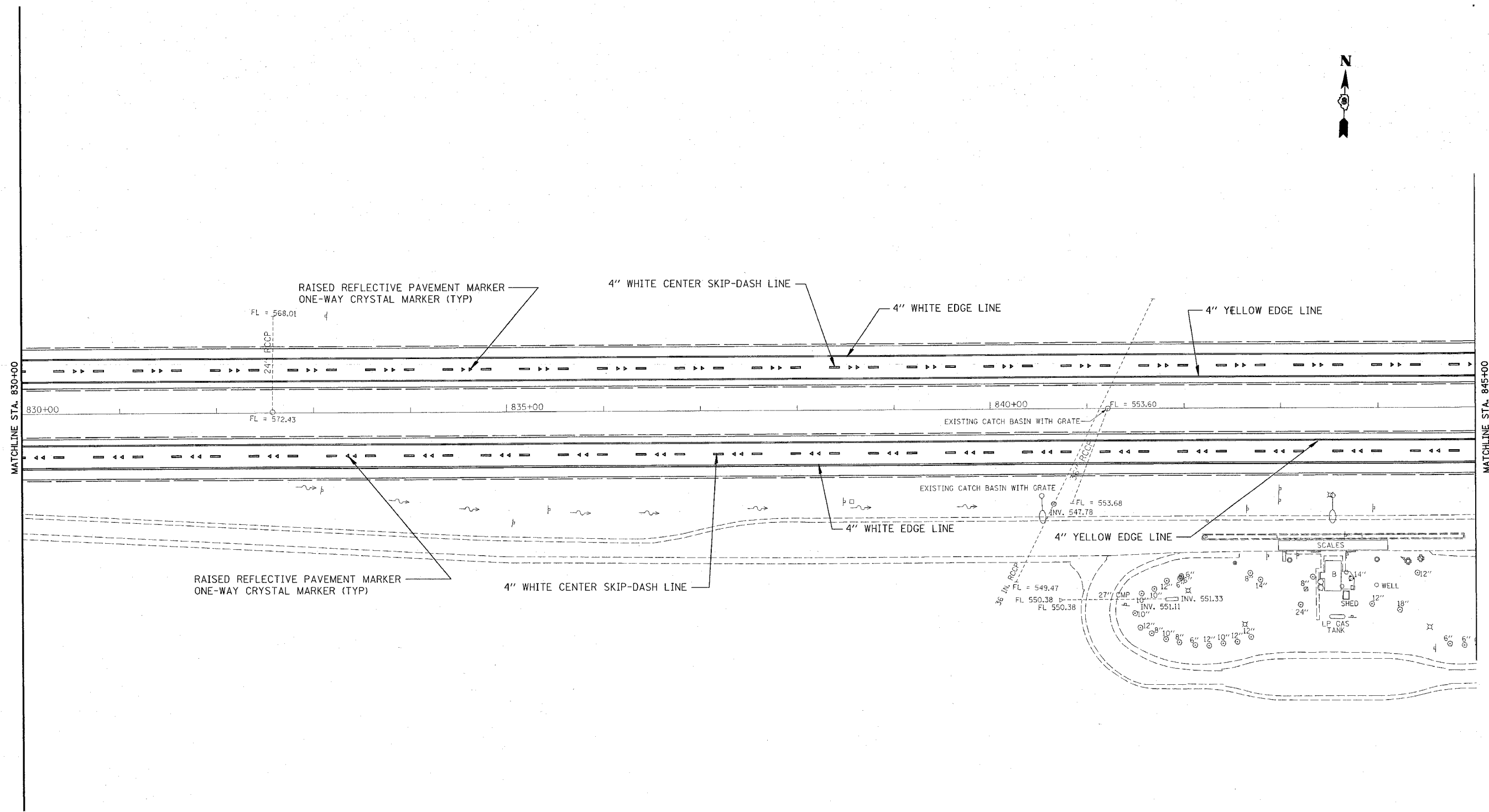


FAI ROUTE	SECTION	COUNTY	TOTAL SHEETS	SHEET NO.
64	82-7RS-1, 82-7HB, 21	ST. CLAIR	89	43
STA.	TO STA.			
			CONTRACT NO.: 76813	

PLAN	DATE
SAVED	
NOTE BOOK	
ALIGNED	
CHECKED	
FILE NAME	
NO.	



RAISED REFLECTIVE PAVEMENT MARKER
ONE-WAY CRYSTAL MARKER (TYP)

4" WHITE CENTER SKIP-DASH LINE

4" WHITE EDGE LINE

4" YELLOW EDGE LINE

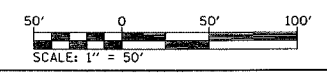
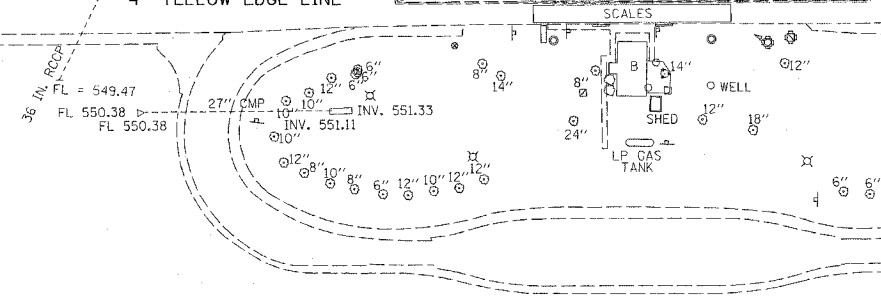
EXISTING CATCH BASIN WITH GRATE

RAISED REFLECTIVE PAVEMENT MARKER
ONE-WAY CRYSTAL MARKER (TYP)

4" WHITE CENTER SKIP-DASH LINE

4" WHITE EDGE LINE

4" YELLOW EDGE LINE



REVISIONS	
NAME	DATE

ILLINOIS DEPARTMENT OF TRANSPORTATION
PAVEMENT MARKING SHEET

FAI ROUTE 64
SECTION 82-7RS-1, 82-7HB, 21
ST. CLAIR COUNTY

DRAWN BY:

PLOT DATE: *DATE-TIME*

DATE-TIME
CONSEC
REF