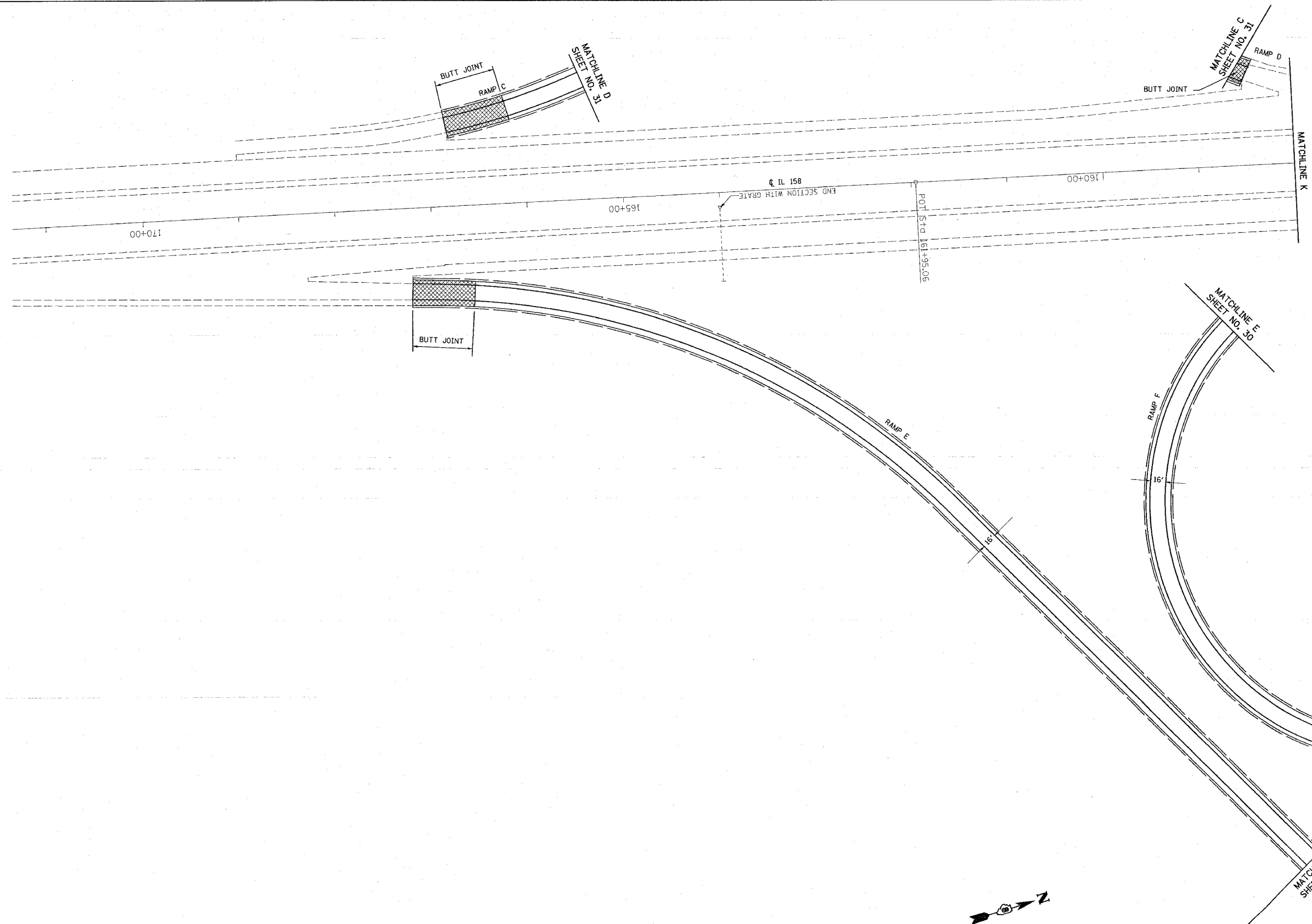
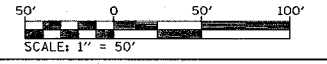


FAI ROUTE	SECTION	COUNTY	TOTAL SHEETS	SHEET NO.
64	82-7RS-1, 82-7HB-1, 2I	ST. CLAIR	89	33
STA.		TO STA.		
CONTRACT NO.: 76813				



PLAN	DESIGNED	DATE
NO.	CHECKED	
	BY	
	DATE	
	NO.	
	DATE	
	BY	
	DATE	



REVISIONS	
NAME	DATE

ILLINOIS DEPARTMENT OF TRANSPORTATION
PLAN VIEW
I-64 AT IL RTE 158
RAMPS C, D, E AND F

FAI ROUTE 64
SECTION 82-7RS-1, 82-7HB-1, 2I
ST. CLAIR COUNTY

DRAWN BY: _____
PLOT DATE: *DATE-TIME*

DATE-TIME
CON-SPEC
REF-PLB