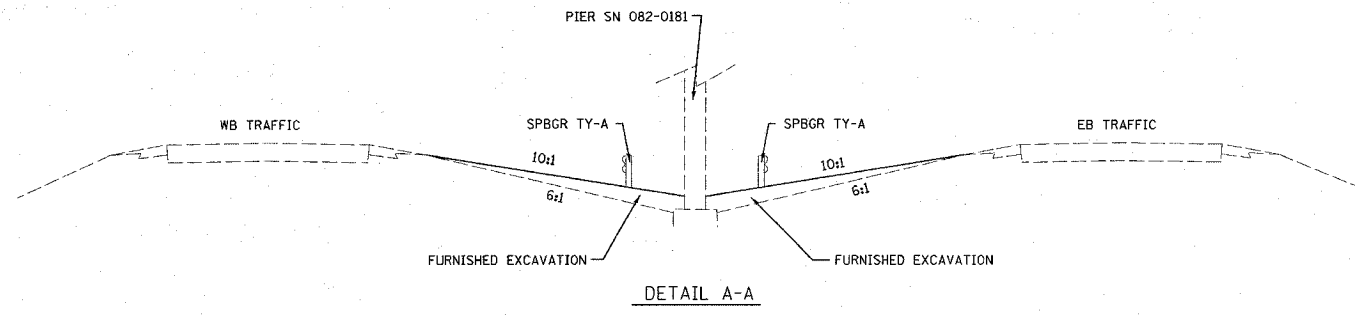


FAI ROUTE	SECTION	COUNTY	TOTAL SHEETS	SHEET NO
64	82-TRS-1, 82-7HB-1, 2I	ST. CLAIR	89	24
STA. 815+00		TO STA. 830+00		
CONTRACT NO.: T6813				

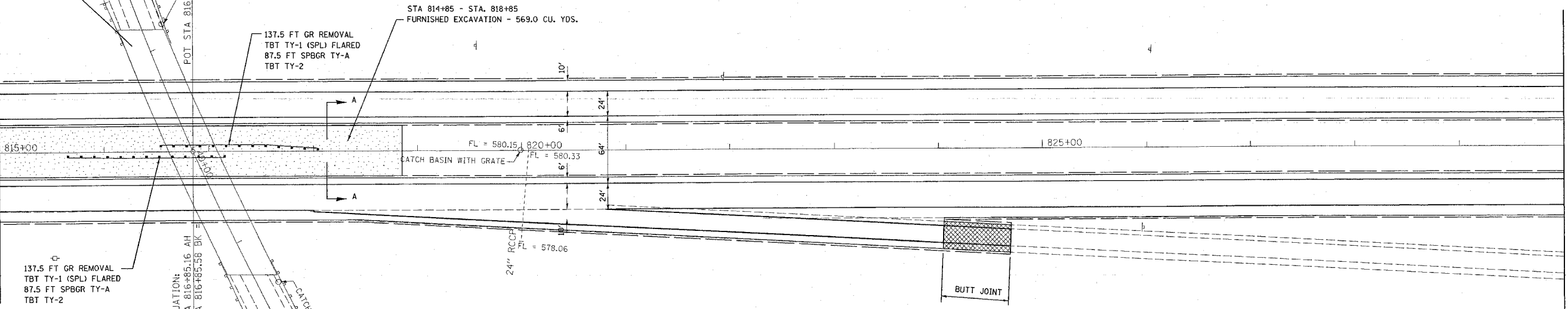
PLAN	DATE
BY	
DESIGNED	
PLOTTED	
CHECKED	
DATE	
NO. OF WAY CHECKED	
FILE NAME	



S. LINCOLN AVE. (FAS 843)
SN 082-0181

MATCHLINE STA. 815+00

MATCHLINE STA. 830+00

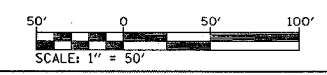


137.5 FT GR REMOVAL
TBT TY-1 (SPL) FLARED
87.5 FT SPBGR TY-A
TBT TY-2

EQUATION:
STA 816+85.16 AH
STA 816+85.58 BK

STA 814+85 - STA. 818+85
FURNISHED EXCAVATION - 569.0 CU. YDS.

EXIST. CURVE 2
PI STA. = 43+28.22
 $\Delta = 21^\circ 52' 13''$ (LT)
D = 2° 00' 00"
R = 2,864.79'
T = 553.49'
L = 1,093.51'
E = 52.98'
e =
T.R. =
S.E. RUN =
P.C. STA. = 37+74.72
P.T. STA. = 48+68.23



ILLINOIS DEPARTMENT OF TRANSPORTATION
PLAN VIEW
I-64 AT S. LINCOLN AVE
SN 082-0181
FAI ROUTE 64
SECTION 82-TRS-1, 82-7HB-1, 2I
ST. CLAIR COUNTY

REVISIONS	
NAME	DATE

DRAWN BY:
PLOT DATE: *DATE-TIME*

DATE: 10/1/00
BY: J. J. BROWN
CHECKED: J. J. BROWN
DATE: 10/1/00