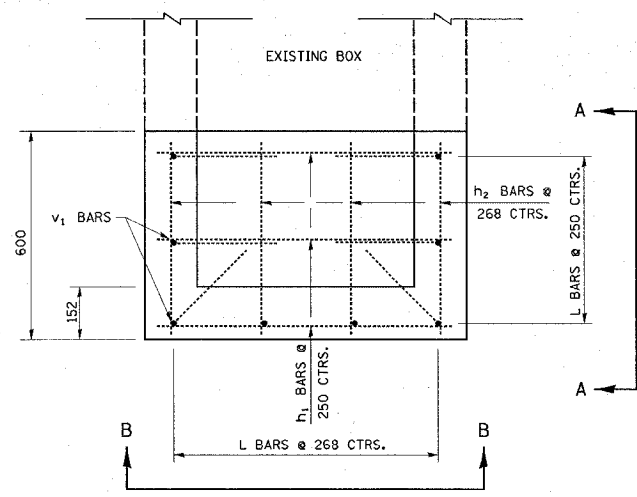
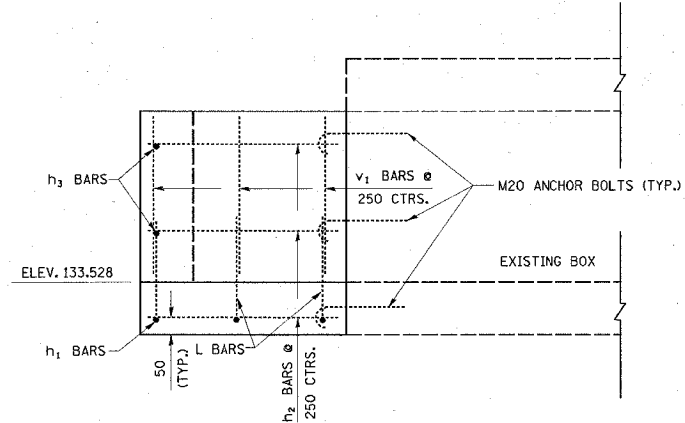


FAP ROUTE	SECTION	COUNTY	TOTAL SHEETS	SHEET NO.
600	51RS-3	*	347	148
STA.		TO STA.		
CONTRACT : 76563				
* ST. CLAIR & MONROE COUNTIES				

PLAN	SURVEYED	BY	DATE
	ALIGNED		
	NOTED		
	FILED		



PLAN VIEW SHOWING BOTTOM REINFORCEMENT



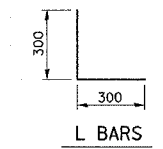
SECTION A-A

**BILL OF MATERIAL**

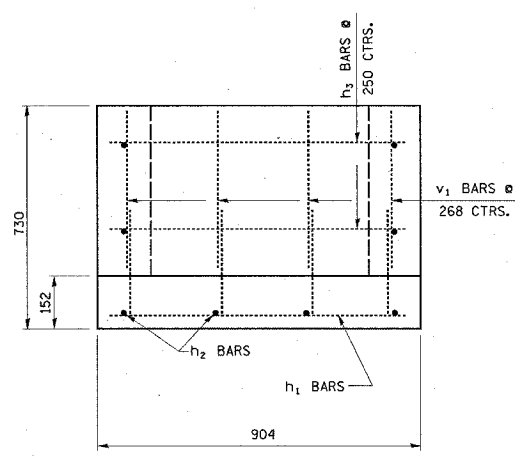
DROP BOX AT LT. 27+428.506

BAR	QUANTITY	SIZE	LENGTH
L	8	NO 15 (NO. 4)	0.60
V1	8	NO 15 (NO. 4)	0.630
H1	3	NO 15 (NO. 4)	0.804
H2	8	NO 15 (NO. 4)	0.50
H3	2	NO 15 (NO. 4)	0.804

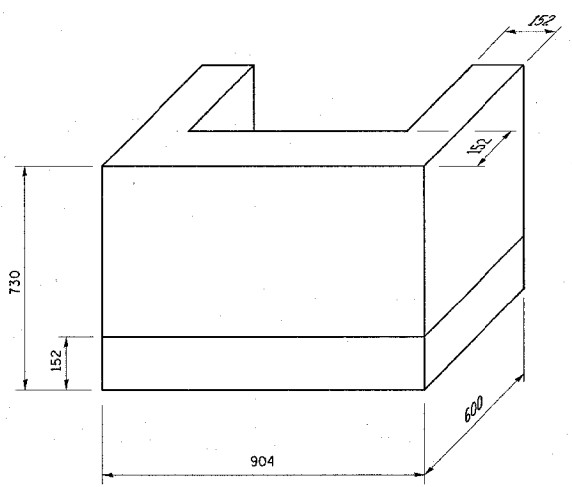
CLASS SI CONCRETE 0.24 CU. M.  
 REINFORCEMENT BARS 28.05 KG.  
 M20 ANCHOR BOLTS 8 EACH  
 NOTE: REINFORCEMENT BAR CLEARANCE SHALL BE 50 (2").



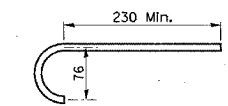
L BARS



SECTION B-B



ISOMETRIC VIEW



M20 ANCHOR BOLT DETAIL

ALL DIMENSIONS ARE IN mm UNLESS DESIGNATED OTHERWISE

REVISIONS	
NAME	DATE

ILLINOIS DEPARTMENT OF TRANSPORTATION  
**DROP BOX DETAIL**  
**STA. 27+428.506 LT.**  
 FAP ROUTE 600  
 SECTION 51RS-3  
 ST. CLAIR & MONROE COUNTIES  
 DRAWN BY: