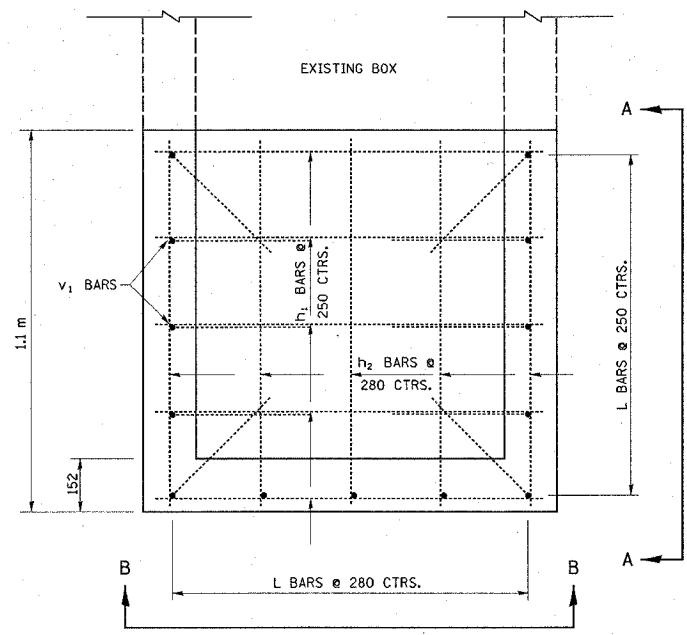
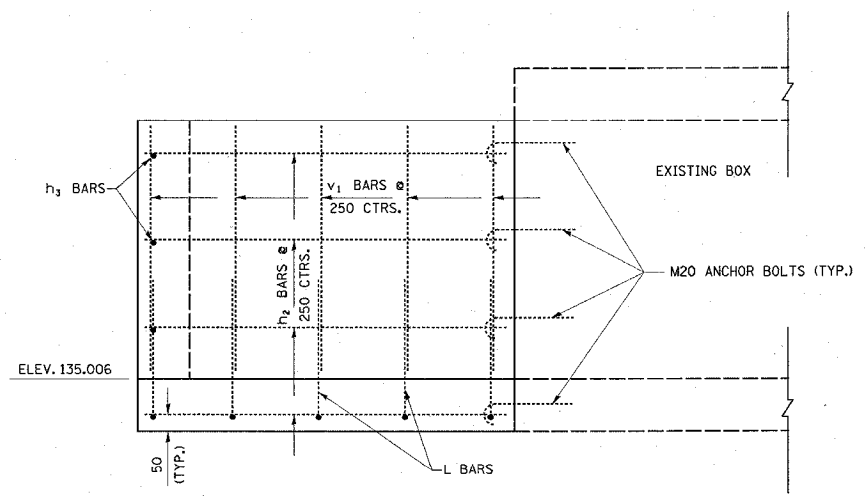


FAP ROUTE	SECTION	COUNTY	TOTAL SHEETS	SHEET NO.
600	5IRS-3		347	147
STA. TO STA.				
CONTRACT : 76563				
• ST. CLAIR & MONROE COUNTIES				

DATE	
BY	
REVIEWED	
APPROVED	
NO.	
FILE NAME	
PLAN	
NOTE BOOK	
NO.	
FILE NAME	



PLAN VIEW SHOWING BOTTOM REINFORCEMENT



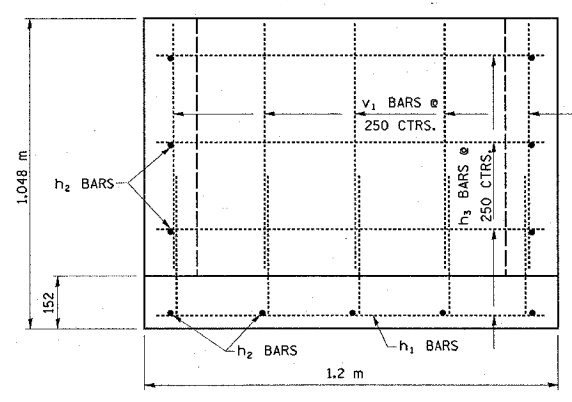
SECTION A-A

**BILL OF MATERIAL**

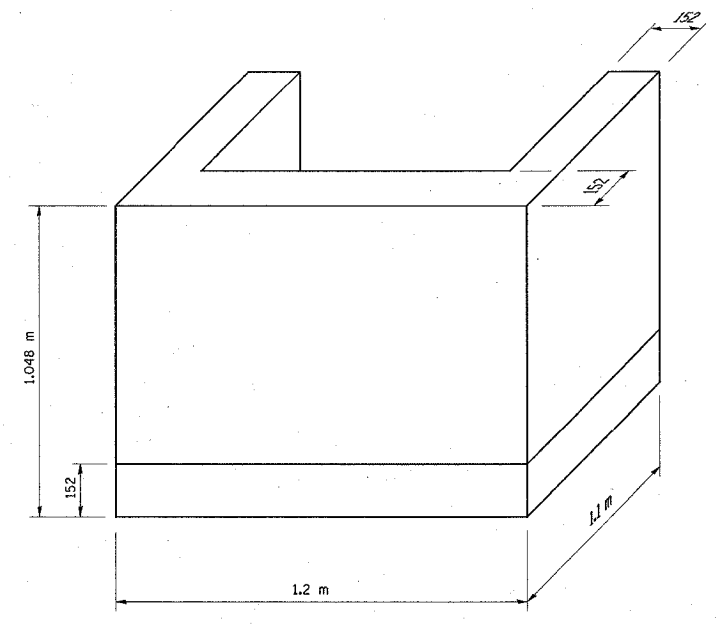
DROP BOX AT LT. 26+980.959

BAR	QUANTITY	SIZE	LENGTH
L	13	NO 15 (NO. 4)	0.80
V1	13	NO 15 (NO. 4)	0.796
H1	5	NO 15 (NO. 4)	1.10
H2	11	NO 15 (NO. 4)	1.00
H3	3	NO 15 (NO. 4)	1.10

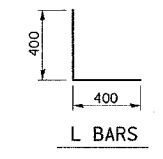
CLASS SI CONCRETE 0.56 CU. M.  
 REINFORCEMENT BARS 63.66 KG.  
 M20 ANCHOR BOLTS 11 EACH  
 NOTE: REINFORCEMENT BAR CLEARANCE SHALL BE 50 (2").



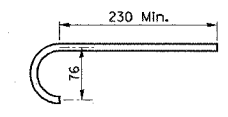
SECTION B-B



ISOMETRIC VIEW



L BARS



M20 ANCHOR BOLT DETAIL

ALL DIMENSIONS ARE IN mm UNLESS DESIGNATED OTHERWISE

REVISIONS	
NAME	DATE

ILLINOIS DEPARTMENT OF TRANSPORTATION  
**DROP BOX DETAIL**  
**STA. 26+980.959 LT.**  
 FAP ROUTE 600  
 SECTION 5IRS-3  
 ST. CLAIR & MONROE COUNTIES  
 DRAWN BY:

3/29/2005  
 Tuesday, March 29, 2005 @ 1:05:22 PM  
 c:\p\proj\st-clair\monroe\gen\detail.dwg L:\1-63