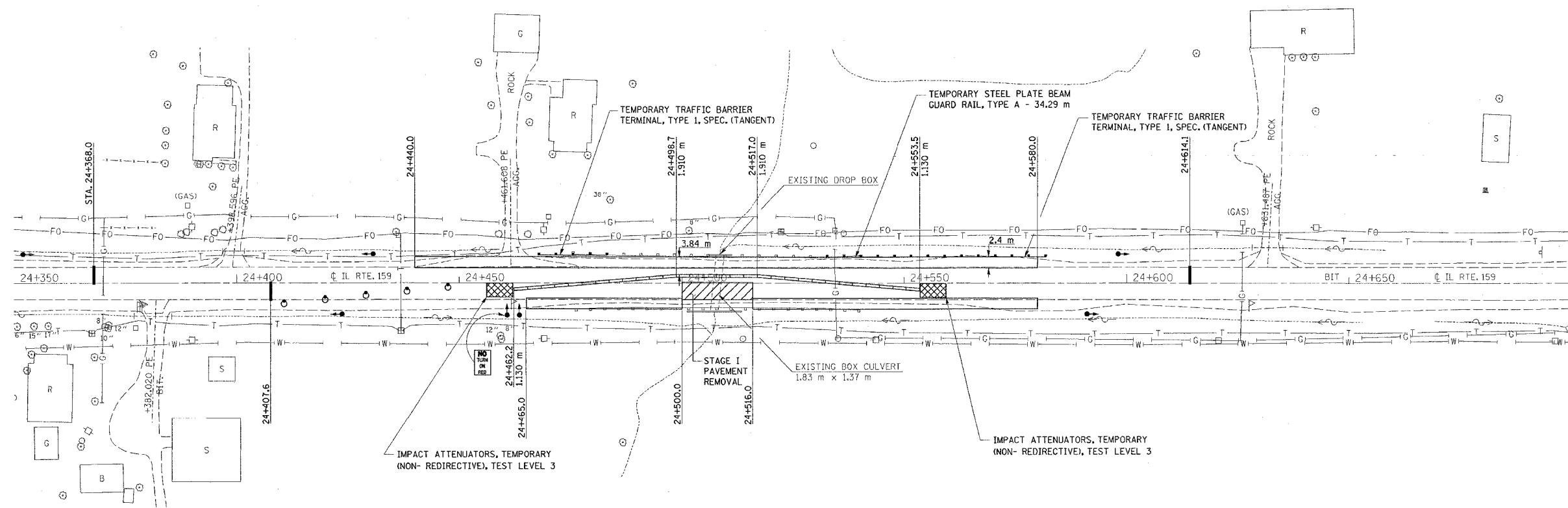


FAP ROUTE	SECTION	COUNTY	TOTAL SHEETS	SHEET NO
600	51RS-3	ST. CLAIR	347	141
STA.		TO STA.		
CONTRACT : 76563				

LEGEND	
	TEMPORARY TRAFFIC SIGNAL
	DRUM WITH STEADY BURNING LIGHT
	IMPACT ATTENUATOR
	TEMPORARY CONCRETE BARRIER



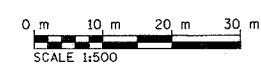
PLAN	SERIALIZED	DATE
NOTE BOOK	PLotted	
NO.	BY	
	DATE	
	BY	
	DATE	



- GENERAL NOTES**
- THIS WORK SHALL SUPPLEMENT AND BE IN ACCORDANCE WITH TRAFFIC CONTROL STANDARD 701321.
 - THE COST OF DRUMS, BARRICADES, REFLECTORS, VERTICAL PANELS AND SIGNING WILL NOT BE PAID FOR SEPARATELY, AND SHALL BE INCLUDED IN THE COST OF TRAFFIC CONTROL AND PROTECTION, STANDARD 701321 (SPECIAL).
 - ACCESS TO ENTRANCES SHALL BE MAINTAINED AT ALL TIMES.
 - THE CONTRACTOR SHALL SAW CUT THE EDGE OF PAVEMENT PRIOR TO PLACING THE BITUMINOUS BASE COURSE FOR STAGE TRAFFIC.
 - THE WIDENING SHALL BE PLACED AS A PRE-STAGE TO STAGE I CONSTRUCTION. WIDENING FROM 24+650 RT. TO STA 24+580 RT. FOR STAGE II TRAFFIC SHALL BE PLACED PRIOR TO STAGE II CONSTRUCTION. THE COST SHALL BE PAID FOR AS "BITUMINOUS BASE COURSE, SUPERPAVE, 230 mm".
 - THE EXISTING GUARDRAIL TERMINAL IN THE NW AND SW QUADRANTS SHALL BE REMOVED AND REPLACED WITH "TEMPORARY STEEL PLATE BEAM GUARD RAIL, TYPE A" AND "TEMPORARY TRAFFIC BARRIER TERMINALS, TYPE 1, SPECIAL (TANGENT)". THIS WORK SHALL BE PERFORMED AS A PRE-STAGE TO STAGE I CONSTRUCTION. SEE CALL-OUTS FOR EXACT LENGTH AND LOCATION.
 - THE BOTTOM 150 mm OF THE TEMPORARY CONCRETE BARRIER SHALL BE PAINTED WITH TEMPORARY PAVEMENT MARKING "WHITE". THE COST SHALL BE PAID FOR AS "TEMPORARY PAVEMENT MARKING - LINE 150 mm".

TRAFFIC CONTROL QUANTITIES

ITEM	UNIT	TOTAL
TRAFFIC CONTROL AND PROTECTION, STD 701321 (SPECIAL)	EACH	1
TRAFFIC CONTROL SURVEILLANCE	CAL DA	7
TEMP. BRIDGE TRAFFIC SIGNALS (STATE FURN. CONTROLLER)	EACH	1
PAVEMENT REMOVAL	SQ M	151
TEMPORARY PAVEMENT MARKING - LINE 150 mm	M	182.9
WORK ZONE PAVEMENT MARKING REMOVAL	SQ M	42.0
RELOCATE TEMPORARY CONCRETE BARRIER (STATE OWNED)	M	79.3
TEMPORARY CONCRETE BARRIER (STATE OWNED)	M	91.5
TEMPORARY STEEL PLATE BEAM GUARDRAIL, TYPE A	M	34.29
PAVEMENT MARKING REMOVAL	SQ M	31.2
BITUMINOUS BASE COURSE, SUPERPAVE 230 mm	SQ M	763
TEMPORARY TBT, TYPE 1, SPECIAL (TANGENT)	EACH	2
IMPACT ATTENUATORS, RELOCATE (NON-REDIRECTIVE), TEST LEVEL 3	EACH	2
IMPACT ATTENUATORS, TEMPORARY (NON-REDIRECTIVE), TEST LEVEL 3	EACH	2



REVISIONS	
NAME	DATE

ILLINOIS DEPARTMENT OF TRANSPORTATION
STAGE 1 CONSTRUCTION
BOX CULVERT REPLACEMENT
STA. 24+507.868
 FAP ROUTE 600
 SECTION 51RS-3
 ST. CLAIR COUNTY

DRAWN BY: