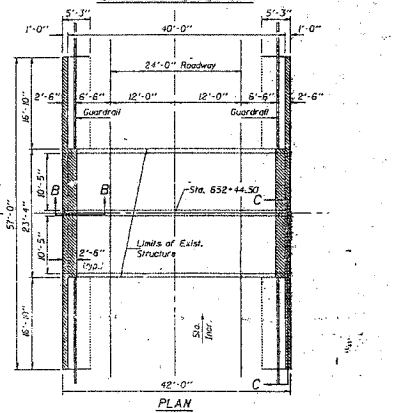
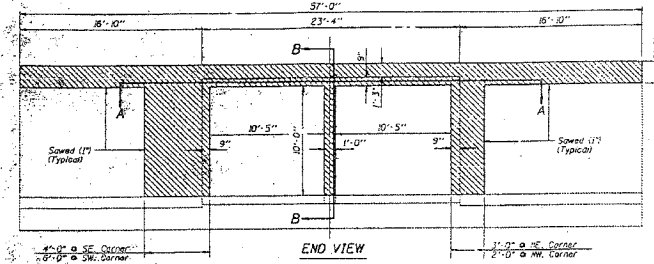
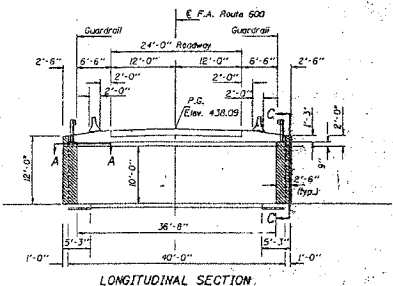


FAP ROUTE	SECTION	COUNTY	TOTAL SHEETS	SHEET NO
600	SIRS-3	ST. CLAIR	547	137
STA. TO STA.		EXISTING CONDITIONS:		

Box culvert, 12' wide, spans across 1.0 mile east from station 0.25 west of center of Sec. 10, R. 9 W. Twp. 3 S. in N.W. angle of junction of road to Standard Iron post with orange cap stamped "807 438" Elev. 437.67.  
 Existing Structure, S.A. 082-2011 built as S.B.T. Route 159, Section 51-150 at Sta. 652+44.50 in 1928.  
 Double 12'-5" x 10'-0" R.C. Box Culvert 42'-0" Out to Out of headwalls.  
 The existing culvert will be rehabilitated at both ends while traffic is being maintained.

STATE OF ILLINOIS  
DEPARTMENT OF TRANSPORTATION

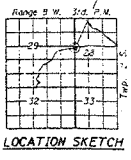
DATE	BY	REVISION



- GENERAL NOTES**
- REINFORCEMENT BARS SHALL CONFORM TO THE REQUIREMENTS OF AASHTO M-31, #42 OR M-53 GRADE 60.
  - PLAN DIMENSIONS AND DETAILS RELATIVE TO EXISTING STRUCTURE HAVE BEEN TAKEN FROM EXISTING PLANS AND ARE SUBJECT TO MINOR CONSTRUCTION VARIATIONS. IT SHALL BE THE CONTRACTOR'S RESPONSIBILITY TO VERIFY SUCH DIMENSIONS AND DETAILS IN THE FIELD AND MAKE NECESSARY APPROVED ADJUSTMENTS PRIOR TO CONSTRUCTION OR ORDERING OF MATERIALS. SUCH VARIATIONS SHALL BE NOT CAUSE FOR ADDITIONAL COMPENSATION FOR A CHANGE IN THE SCOPE OF THE WORK. HOWEVER, THE CONTRACTOR WILL BE PAID FOR THE QUANTITY ACTUALLY FURNISHED AT THE UNIT PRICE BID FOR THE WORK.
  - THE CONCRETE REPAIR SHALL BE DONE IN SUCH A MANNER AS TO PREVENT DAMAGE TO THE EXISTING REINFORCEMENT BARS.
  - ALL BENT REINFORCEMENT BARS SHALL BE STRAIGHTENED. IF THERE ARE SHARP BENDS, NEW #4 OR #8 BARS SHALL BE LAPPED TO THEM AS DIRECTED BY THE ENGINEER. AN ESTIMATED QUANTITY OF 80 LBS. OF REINFORCEMENT HAS BEEN INCLUDED IN THE P.L.S FOR REPAIR OF BENT BARS.
  - ALL EXISTING REINFORCEMENT BARS TO BE UTILIZED IN THE NEW CONSTRUCTION SHALL BE CLEANED PRIOR TO PLACEMENT OF THE CLASS X CONCRETE.
  - STEEL PLATE SEAM GUARD RAILS SHALL BE ATTACHED TO THE BOX CULVERTS IN ACCORDANCE WITH CASE IV OF STANDARD 2325.
  - HATCHED AREA INDICATES CONCRETE REMOVAL.

**DESIGN SPECIFICATIONS**

AASHTO MS 20-44  
LOADING HS 20-44  
ALLOW 25% ON THE TOP SURFACE MEASURING SURFACE.  
**DESIGN STRESSES**  
 FIELD MOMENTS  
 FC = 1500 psi  
 fy = 60,000 psi (F60K)

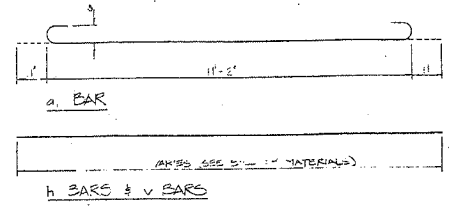
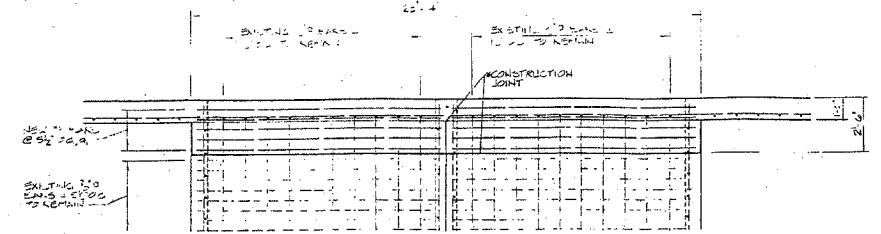


BOX CULVERT DETAILS  
ILLINOIS ROUTE 159 OVER  
TRIBUTARY TO RICHLAND CREEK  
F.A. ROUTE 600 SECTION 51B-1  
ST. CLAIR COUNTY  
STATION 652+44.50  
STRUCTURE NUMBER 082-2011

DESIGNED T.O.	EXAMINED
CHECKED	APPROVED
DRAWN Paul W. Sweet	APPROVED
CHECKED R.L.D.	APPROVED

**HIGHWAY CLASSIFICATION**

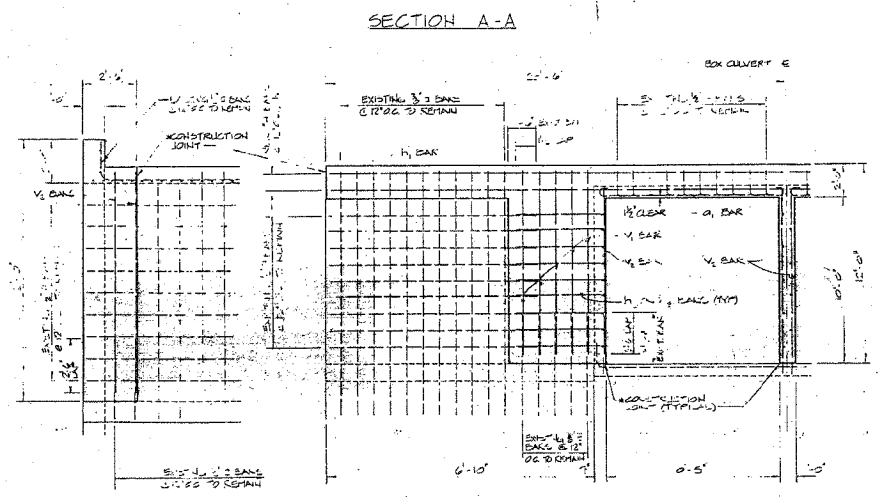
F.A. Route 600  
Class. Arterial  
A.D.T. TRUCK/2000  
D.M.V. 600  
Design Speed 55 mph  
Plotted Speed 55 mph



**BILL OF MATERIALS**

BAR	NO	SIZE	LENGTH
a	20	#6	13'-0"
b	8	#4	13'-0"
c	4	#4	13'-0"
d	4	#4	13'-0"
e	1	#5	13'-0"
f	2	#5	13'-0"

REINFORCEMENT BARS 1500 LB  
 CLASS X CONCRETE 15.0 CYC  
 CONCRETE REMOVAL 15.0 CYC



REINFORCEMENT & CLASS X CONCRETE DETAILS  
STRUCTURE NUMBER 082-2011

**REVISIONS**

NAME	DATE

ILLINOIS DEPARTMENT OF TRANSPORTATION  
**EXISTING PLANS**  
 FAP ROUTE 600  
 SECTION 51RS-3  
 ST. CLAIR COUNTY  
 SN 082-2041  
 DRAWN BY:

DATE	BY	REVISION

PLAN	CHECKED
NOTE BOOK	NO.