

steffenmk
3/29/2005
c:\projects\74073\d05404pa.dgn
EJ 96 4

CONTRACT NO. 74073

F.A.P. RTE.	SECTION	COUNTY	TOTAL SHEETS	SHEET NO.
726	*	JEFFERSON	10	8
STA.		TO STA.		
FED. ROAD DIST. NO.		ILLINOIS FED. AID PROJECT		

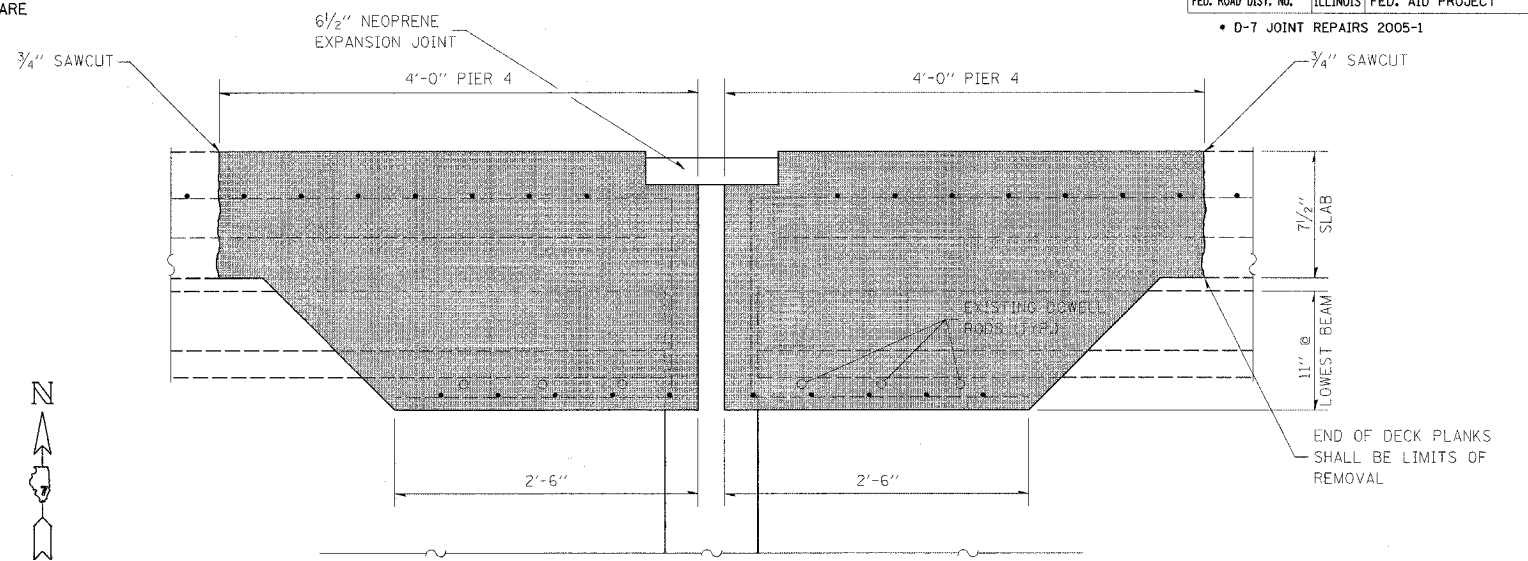
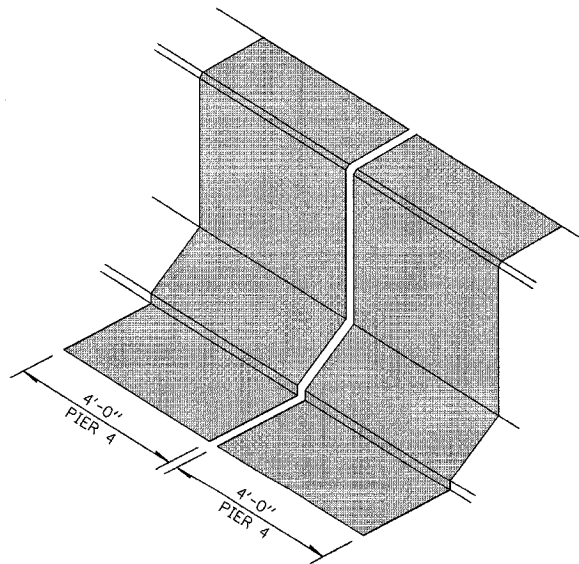
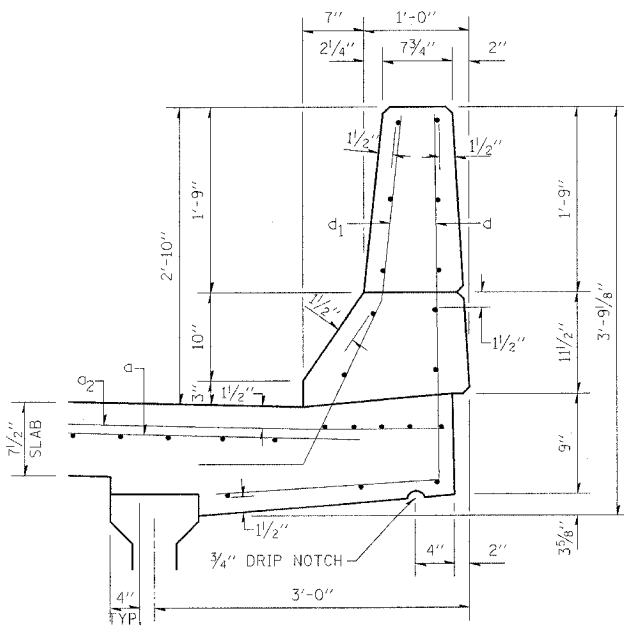
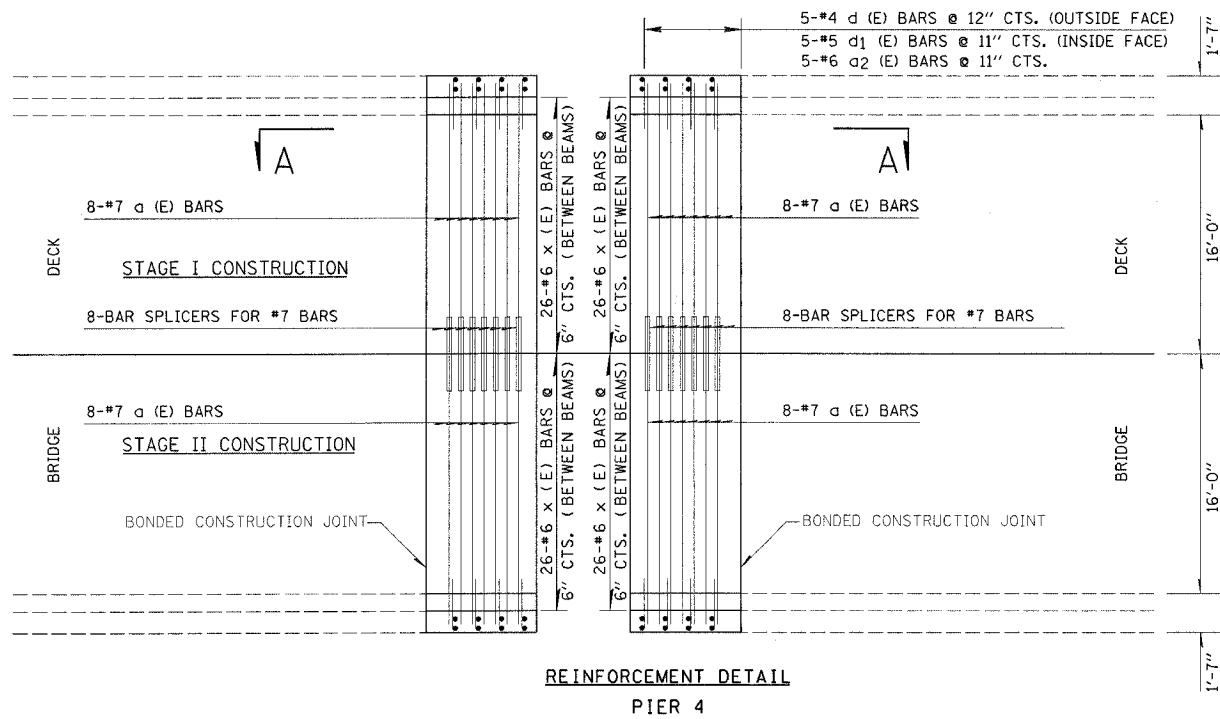
* D-7 JOINT REPAIRS 2005-1

BAR LIST - PIER 4 - STR #041-0096

BAR	NUMBER OF BARS		TOTAL	SIZE	LENGTH	SHAPE
	STAGE I	STAGE II				
a (E)	16	16	32	#7	15'-1"	—
a1 (E)	20	20	40	#6	6'-6"	—
a2 (E)	10	10	20	#6	4'-0"	—
d (E)	10	10	20	#4	4'-10"	J
d1 (E)	10	10	20	#5	4'-1"	J
x (E)	52	52	104	#6	6'-11"	—

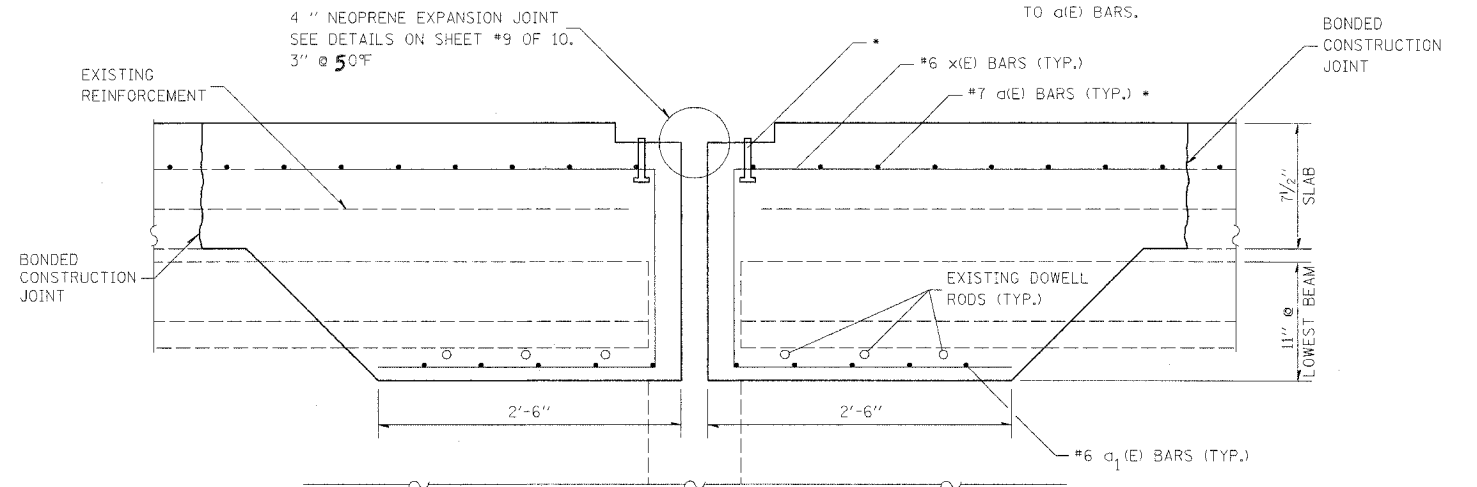
REINFORCEMENT BARS DESIGNATED (E) SHALL BE EPOXY COATED

CONCRETE REMOVAL (LIMITS ARE FROM OUT TO OUT OF DECK)



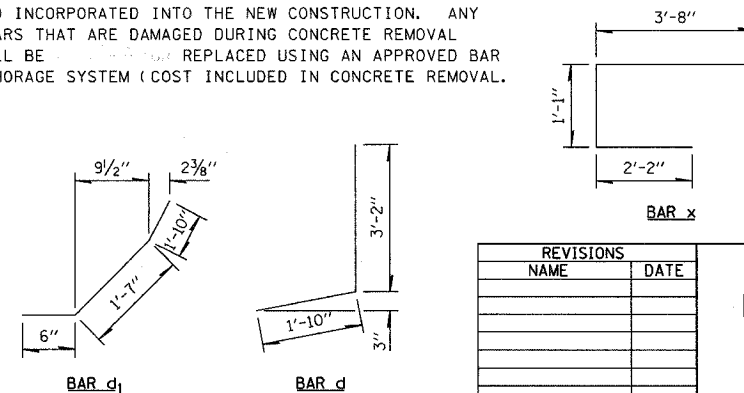
EXISTING EXPANSION JOINTS AT PIER 4

* PLACE a1(E) BARS IN BACK OF ANCHOR BOLT AS SHOWN IF REQUIRED TO MAINTAIN 1" CLEARANCE (+/- 1/8"). ANCHOR BOLTS SHOULD BE TIED TO a1(E) BARS.



PROPOSED EXPANSION JOINTS AT PIER 4

NOTE: EXISTING REINFORCEMENT BARS AND DOWELL RODS ARE TO BE CLEANED, STRIGHTENED AND INCORPORATED INTO THE NEW CONSTRUCTION. ANY REINFORCEMENT BARS THAT ARE DAMAGED DURING CONCRETE REMOVAL OPERATIONS SHALL BE REPLACED USING AN APPROVED BAR SPlicER OR ANCHORAGE SYSTEM (COST INCLUDED IN CONCRETE REMOVAL).



REVISIONS	
NAME	DATE

ILLINOIS DEPARTMENT OF TRANSPORTATION
EXPANSION JOINT DETAILS
PIER 4
STR #041-0096

SCALE: VERT.
HORIZ.
DATE

DRAWN BY
CHECKED BY

PLOT DATE = 3/29/2005
FILE NAME = #FILEL*
PLOT SCALE = #SCALE*
REFERENCE = #REF*