

steffennk
3/29/2005
c:\projects\74073d\05404pa.dgn

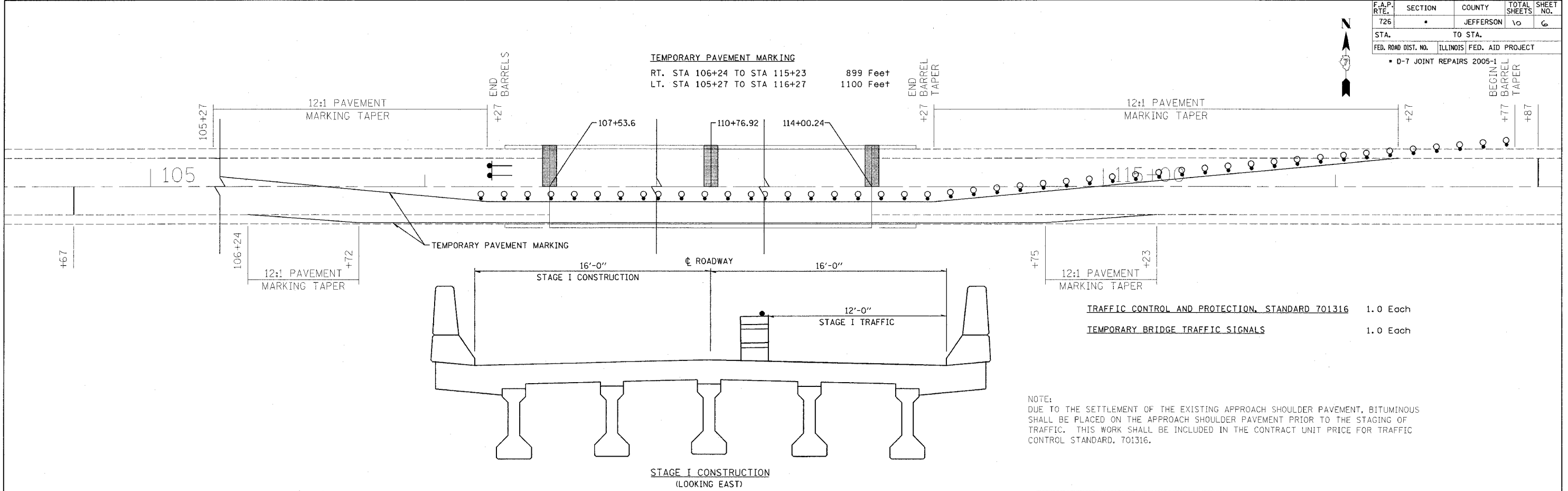
STAGE

CONTRACT NO. 74073

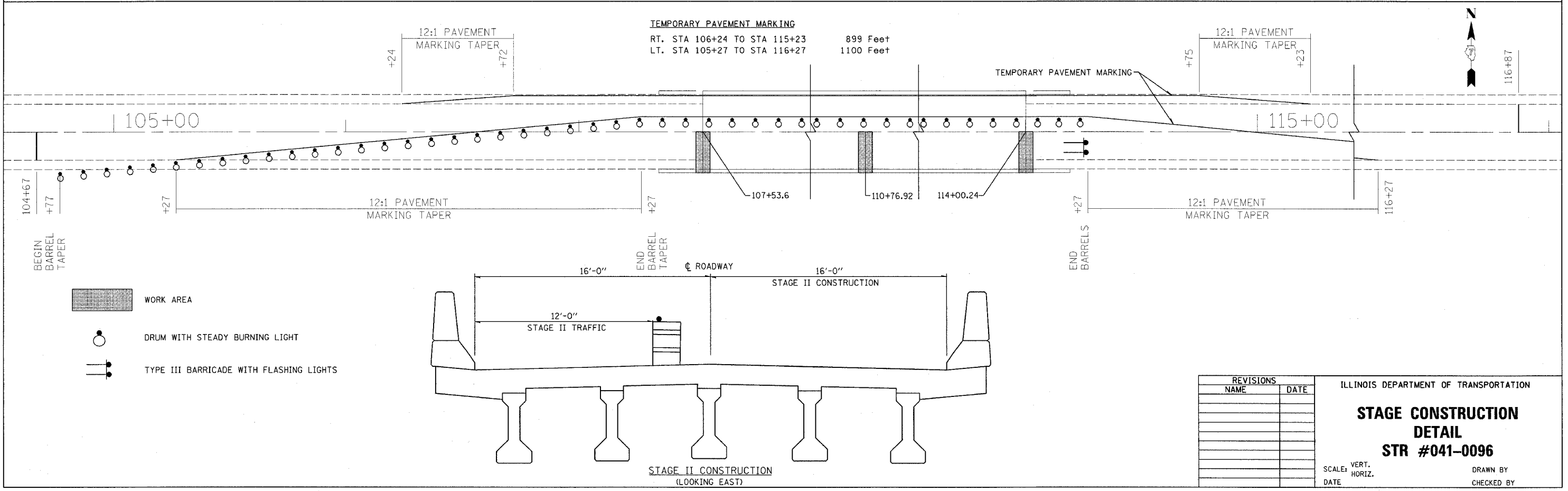
F.A.P. RTE.	SECTION	COUNTY	TOTAL SHEETS	SHEET NO.
726	*	JEFFERSON	60	6
STA. TO STA.				
FED. ROAD DIST. NO.		ILLINOIS	FED. AID PROJECT	



• 0-7 JOINT REPAIRS 2005-1



NOTE:
DUE TO THE SETTLEMENT OF THE EXISTING APPROACH SHOULDER PAVEMENT, BITUMINOUS SHALL BE PLACED ON THE APPROACH SHOULDER PAVEMENT PRIOR TO THE STAGING OF TRAFFIC. THIS WORK SHALL BE INCLUDED IN THE CONTRACT UNIT PRICE FOR TRAFFIC CONTROL STANDARD, 701316.



REVISIONS	
NAME	DATE

ILLINOIS DEPARTMENT OF TRANSPORTATION
**STAGE CONSTRUCTION
DETAIL
STR #041-0096**
SCALE: VERT. _____
DATE _____ HORIZ. _____
DRAWN BY _____
CHECKED BY _____

PLOT DATE = 3/29/2005
PLOT SCALE = AS SHOWN
REFERENCE = REF