

F.A.P. RTE.	SECTION	COUNTY	TOTAL SHEETS	SHEET NO.
726		JEFFERSON	10	1

D-7 JOINT REPAIR 2005-1

STATE OF ILLINOIS  
DEPARTMENT OF TRANSPORTATION

DIVISION OF HIGHWAYS

**PROPOSED  
HIGHWAY PLANS**

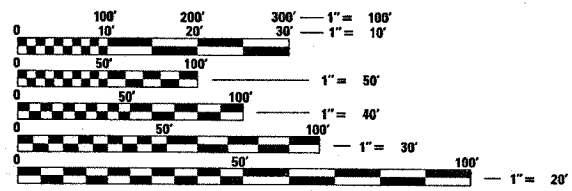
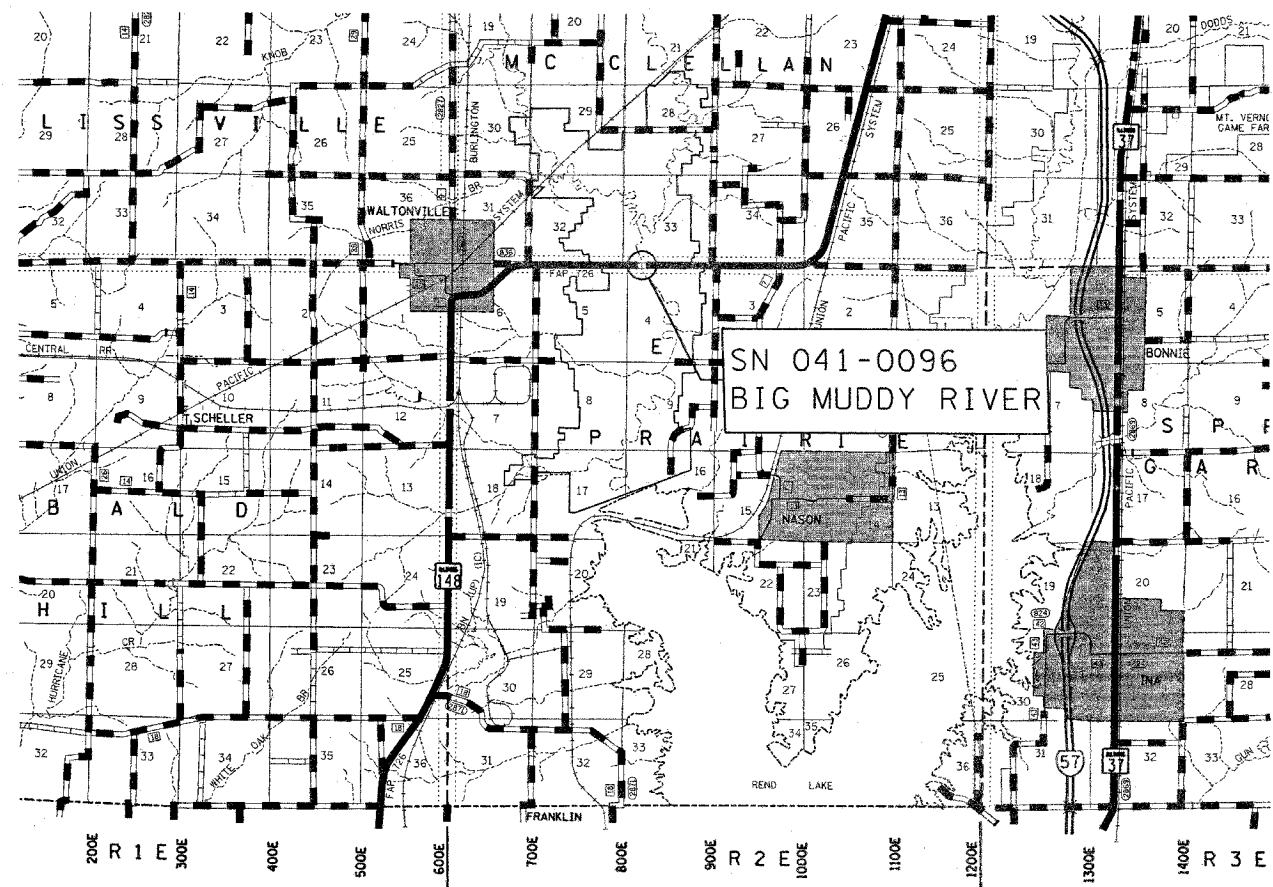
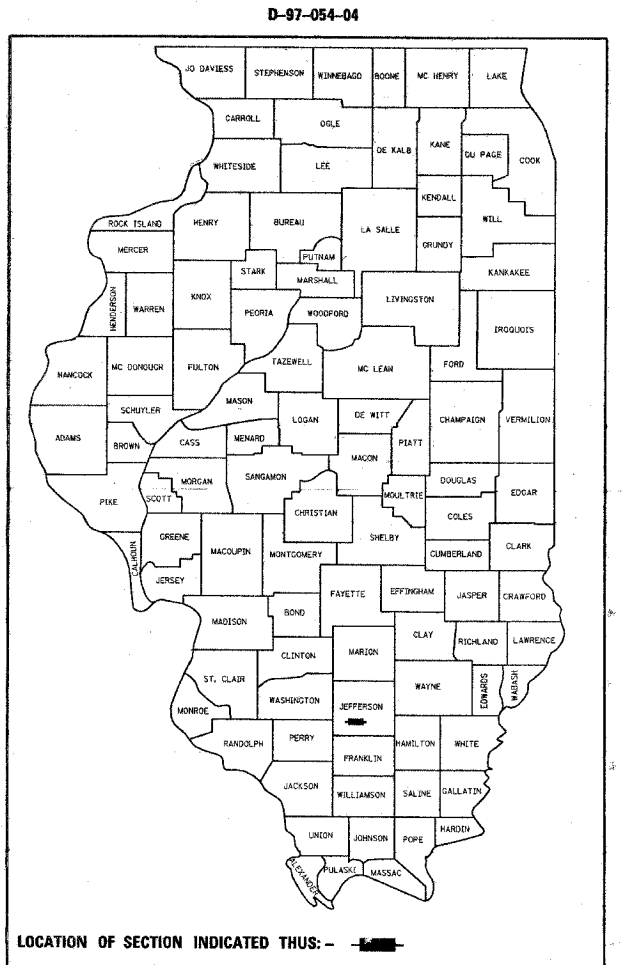
FAP ROUTE 726 (IL 148)

D-7 JOINT REPAIR 2005-1

JEFFERSON COUNTY

C-97-094-04

SEE SHEET 2 FOR INDEX OF SHEETS



FULL SIZE PLANS HAVE BEEN PREPARED USING STANDARD ENGINEERING SCALES. REDUCED SIZED PLANS WILL NOT CONFORM TO STANDARD SCALES. IN MAKING MEASUREMENTS ON REDUCED PLANS, THE ABOVE SCALES MAY BE USED.

J.U.L.I.E.  
JOINT UTILITY LOCATION INFORMATION FOR EXCAVATION  
1-800-892-0123

PROJECT ENGINEER : MIKE ALLEN  
SQUAD LEADER :  
DESIGNER : ALEC RING  
TELEPHONE : 217/342-3951 EX 316

CONTRACT NO. 74073

2004 ADT = 2650

GROSS LENGTH = 646.7 FT  
NET LENGTH = 646.7 FT

STATE OF ILLINOIS  
DEPARTMENT OF TRANSPORTATION  
DIVISION OF HIGHWAYS

SUBMITTED MARCH 29 2005  
Christine M. Reed  
DEPUTY DIRECTOR OF HIGHWAYS, REGION FOUR ENGINEER

May 13, 2005  
Mike Reed  
ENGINEER OF DESIGN AND ENVIRONMENT

May 13, 2005  
Victor Madorsky  
DIRECTOR OF HIGHWAYS, CHIEF ENGINEER

**PRINTED BY THE AUTHORITY  
OF THE STATE OF ILLINOIS**