

teasleyck  
2/7/2005  
ct:\projects\74049d\03004pa.dgn

74049

FAP RTE.	SECTION	COUNTY	TOTAL SHEETS	SHEET NO.
781	(1Z,17Z)RS-2	CRAWFORD	14	1

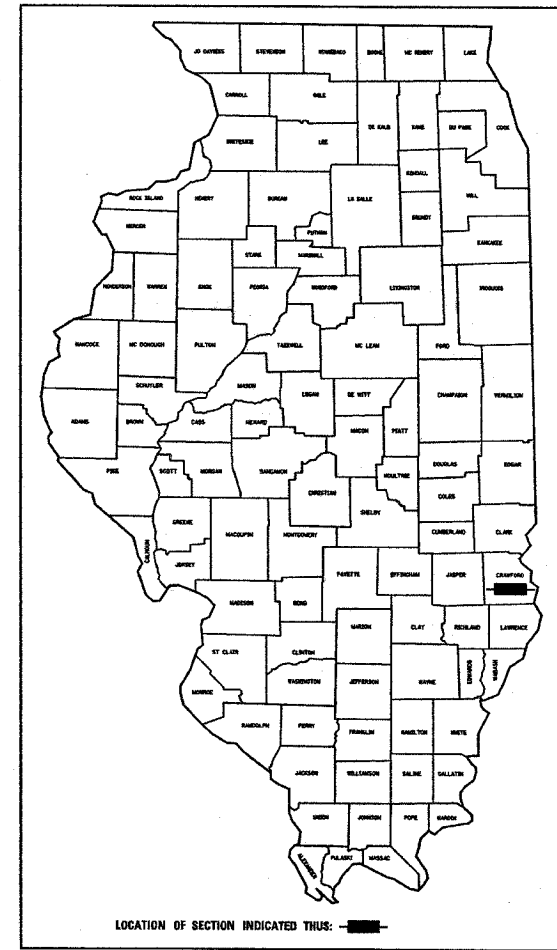
SEE SHEET 2 FOR INDEX OF SHEETS

STATE OF ILLINOIS  
DEPARTMENT OF TRANSPORTATION  
DIVISION OF HIGHWAYS

PLANS FOR PROPOSED  
FEDERAL HIGHWAY PROJECT

FAP ROUTE 781 (IL 33)  
SECTION (1Z, 17Z)RS-2  
PROJECT NO. F-0781-(026)  
CRAWFORD COUNTY

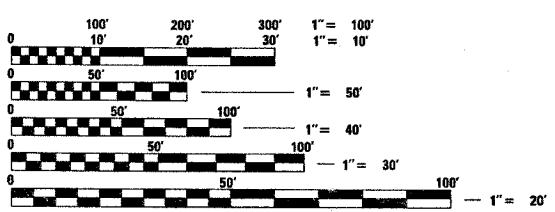
D-97-030-04



LOCATION OF SECTION INDICATED THUS: [shaded box]

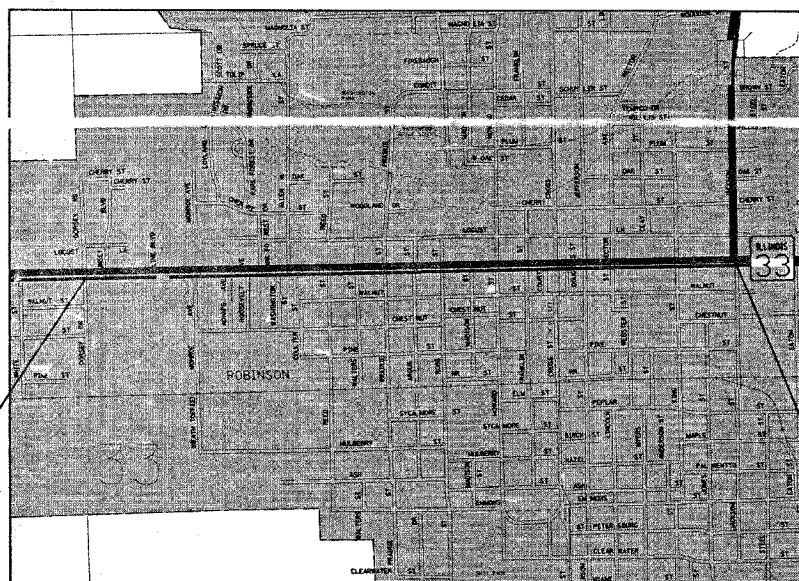
STATION EQUATIONS  
STA. 1191+01.00 (BK) = STA. 0+00.00 (AH)

C-97-067-04



FULL SIZE PLANS HAVE BEEN PREPARED USING STANDARD ENGINEERING SCALES, REDUCED SIZED PLANS WILL NOT CONFORM TO STANDARD SCALES, IN MAKING MEASUREMENTS ON REDUCED PLANS, THE ABOVE SCALES MAY BE USED.

J.U.L.I.E.  
JOINT UTILITY LOCATION INFORMATION FOR EXCAVATION  
1-800-892-0123



FAP ROUTE 781 (IL 33)  
SECTION (1Z, 17Z)RS-2  
CRAWFORD COUNTY  
PROJECT BEGINS  
STA. 1164+40



FAP ROUTE 781 (IL 33)  
SECTION (1Z, 17Z)RS-2  
CRAWFORD COUNTY  
PROJECT ENDS  
STA. 19+47

STATE OF ILLINOIS  
DEPARTMENT OF TRANSPORTATION  
DIVISION OF HIGHWAYS

SUBMITTED Feb 8 20 05

Christ H. Reed  
DISTRICT ENGINEER

20

ENGINEER OF PROJECT DEVELOPMENT AND IMPLEMENTATION  
March 25, 2005  
Mike Line  
ENGINEER OF DESIGN AND ENVIRONMENT

March 25, 2005  
Victor Maden  
DIRECTOR, DIVISION OF HIGHWAYS

CONTRACT NO. 74049

ADT (2003) - 12000

TOWNSHIP : ROBINSON

GROSS LENGTH = 4608.0 FEET = 0.87 MILES  
NET LENGTH = 4608.0 FEET = 0.87 MILES

SEAL

PRINTED BY THE AUTHORITY OF  
THE STATE OF ILLINOIS

Rev-

PROJECT ENGINEER : BILL STANLEY  
SQUAD LEADER : JENNIFER WENTHE  
DESIGNER : JENNIFER WENTHE  
TELEPHONE : 217/342-3951 EX 361