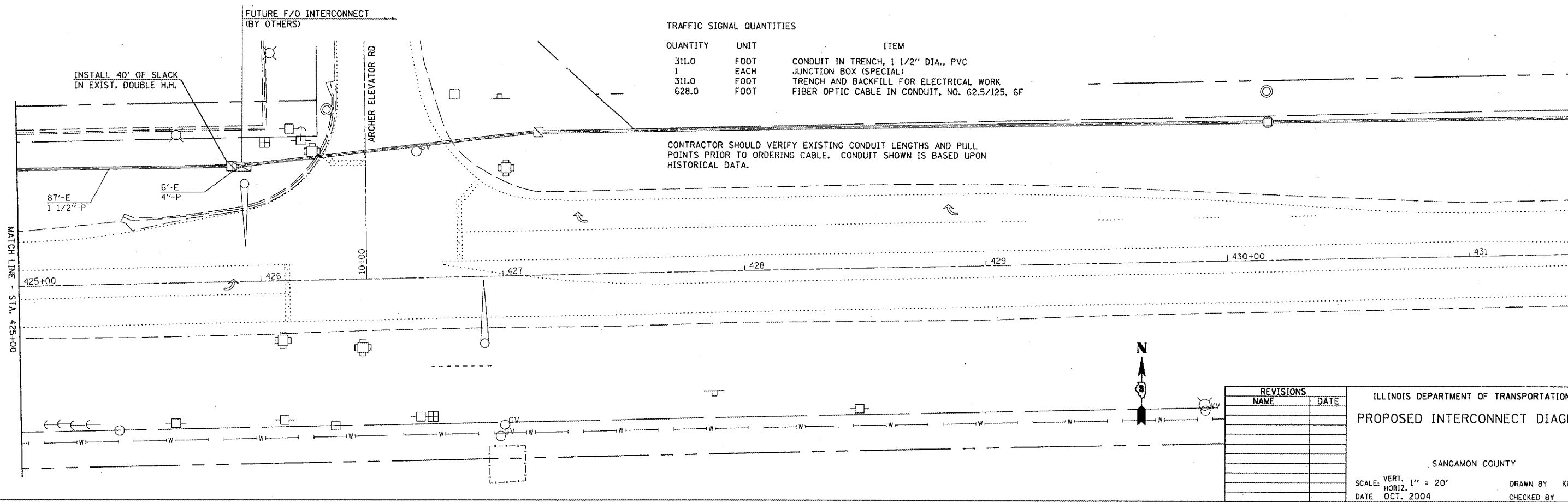
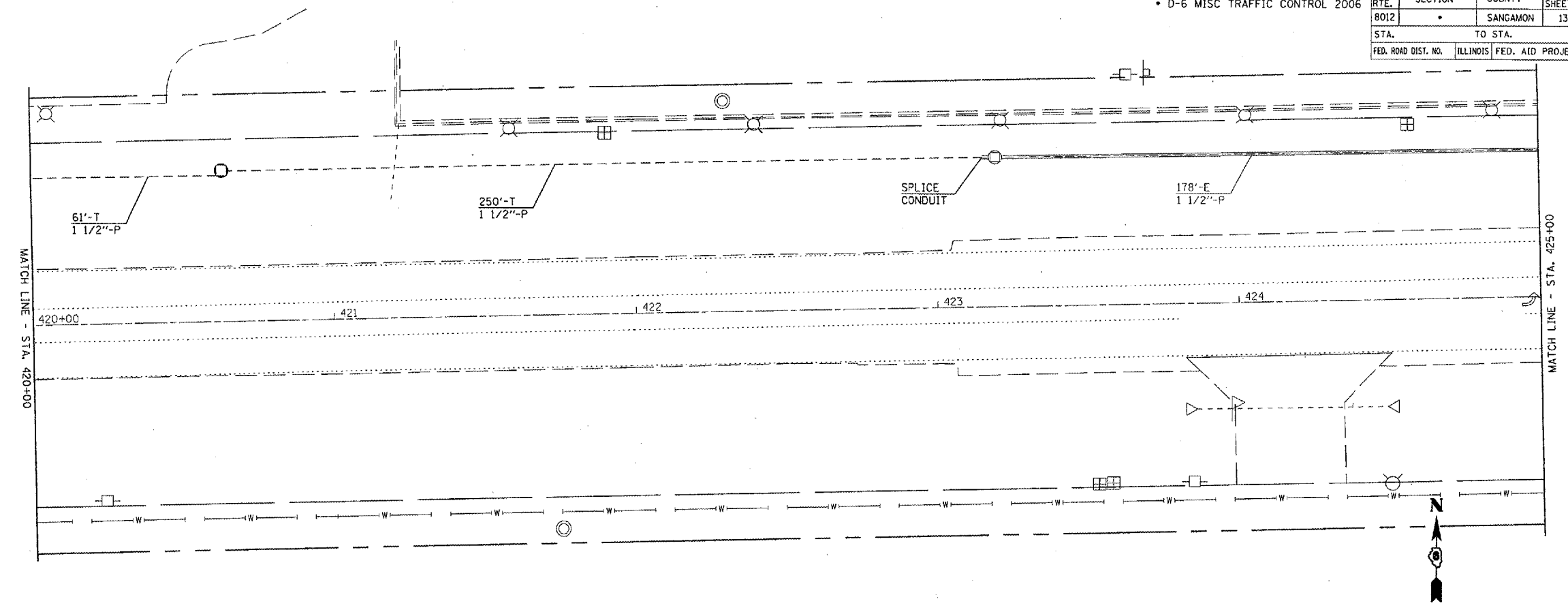


• D-6 MISC TRAFFIC CONTROL 2006

CONTRACT NO. 72941

F.A.U. RTE.	SECTION	COUNTY	TOTAL SHEETS	SHEET NO.
8012		SANGAMON	13	7
STA.		TO STA.		
FED. ROAD DIST. NO.		ILLINOIS	FED. AID PROJECT	



TRAFFIC SIGNAL QUANTITIES

QUANTITY	UNIT	ITEM
311.0	FOOT	CONDUIT IN TRENCH, 1 1/2" DIA., PVC
1	EACH	JUNCTION BOX (SPECIAL)
311.0	FOOT	TRENCH AND BACKFILL FOR ELECTRICAL WORK
628.0	FOOT	FIBER OPTIC CABLE IN CONDUIT, NO. 62.5/125, 6F

CONTRACTOR SHOULD VERIFY EXISTING CONDUIT LENGTHS AND PULL POINTS PRIOR TO ORDERING CABLE. CONDUIT SHOWN IS BASED UPON HISTORICAL DATA.

INSTALL 40' OF SLACK IN EXIST. DOUBLE H.H.

FUTURE F/O INTERCONNECT (BY OTHERS)

ARCHER ELEVATOR RD

REVISIONS	
NAME	DATE

ILLINOIS DEPARTMENT OF TRANSPORTATION  
PROPOSED INTERCONNECT DIAGRAM

SANGAMON COUNTY

SCALE: VERT. 1" = 20'  
HORIZ. 1" = 20'  
DATE OCT. 2004  
DRAWN BY KDA  
CHECKED BY

WABASH & ARCHER ELEVATOR

PLOT DATE = 2/16/2005  
FILE NAME = CIV-000001\05081001\05081001.dgn  
PLOT SCALE = 43.3735 / 1 IN.  
REFERENCE = #REF#