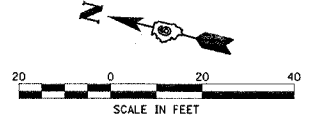
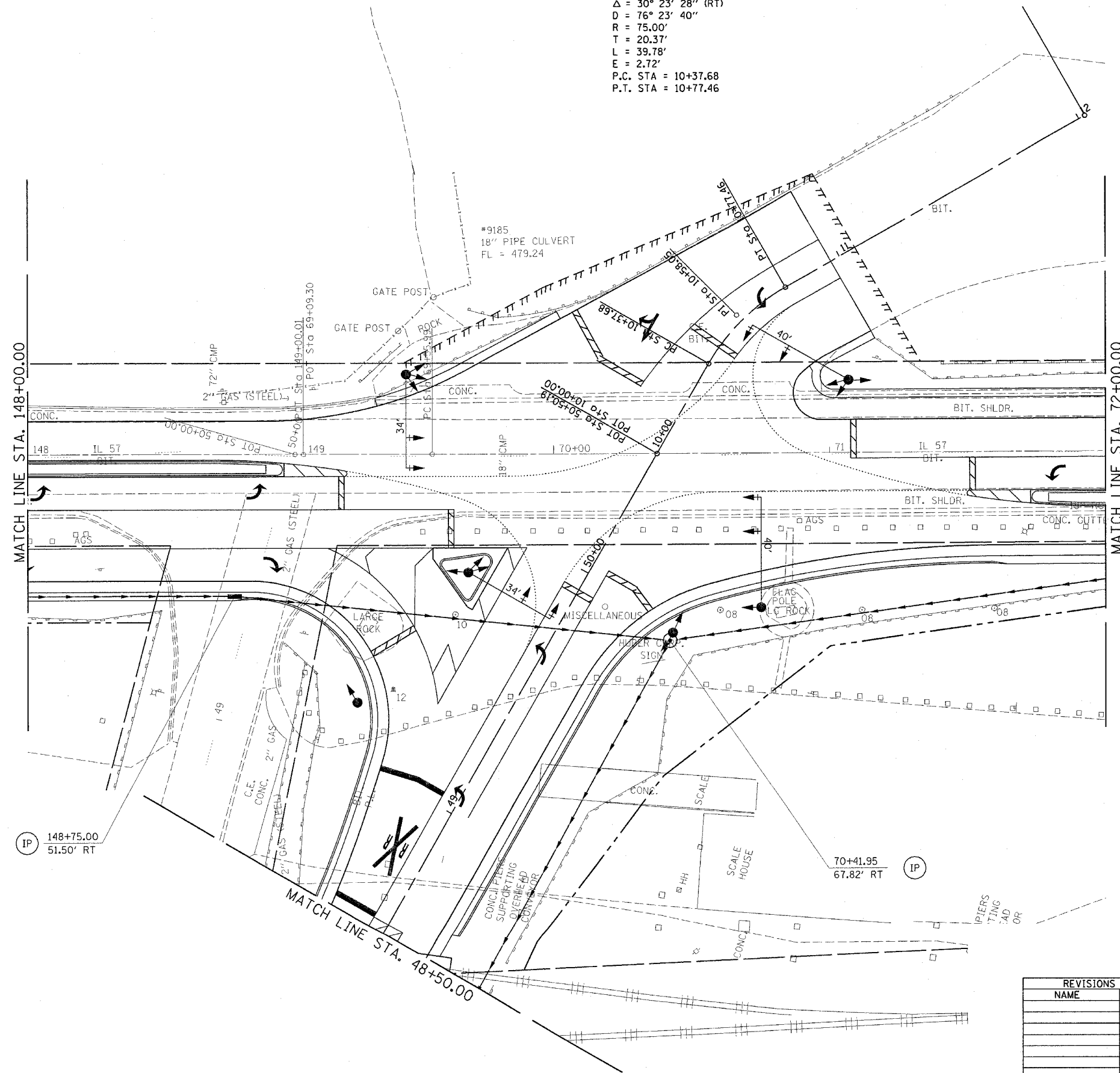


F.A.P. RTE.	SECTION	COUNTY	TOTAL SHEETS	SHEET NO.
502	.	ADAMS	315	96
STA.	TO STA.			
FED. ROAD DIST. NO.	ILLINOIS FED. AID PROJECT			

• [53RS-7, P(RS-2)IN, TS  
CONTRACT NO. 72897



PROP. CURVE C2  
 P1 STA. = 10+58.05  
 $\Delta = 30^\circ 23' 28''$  (RT)  
 $D = 76^\circ 23' 40''$   
 $R = 75.00'$   
 $T = 20.37'$   
 $L = 39.78'$   
 $E = 2.72'$   
 P.C. STA = 10+37.68  
 P.T. STA = 10+77.46



**LEGEND**

- PERIMETER EROSION BARRIER
- INLET AND PIPE PROTECTION
- TEMPORARY DITCH CHECK

REVISIONS	
NAME	DATE

ILLINOIS DEPARTMENT OF TRANSPORTATION  
**EROSION CONTROL**  
 F.A.P. 502 (IL 57) & RADIO RD.  
 ADAMS COUNTY  
 QUINCY, IL.

SCALE: VERT. \_\_\_\_\_  
 HORIZ. \_\_\_\_\_  
 DATE 04-13-04  
 DRAWN BY TMJ  
 CHECKED BY MEB

ct:\projects\d653004\ersnctl.dgn  
 2/3/2005  
 \*REF01