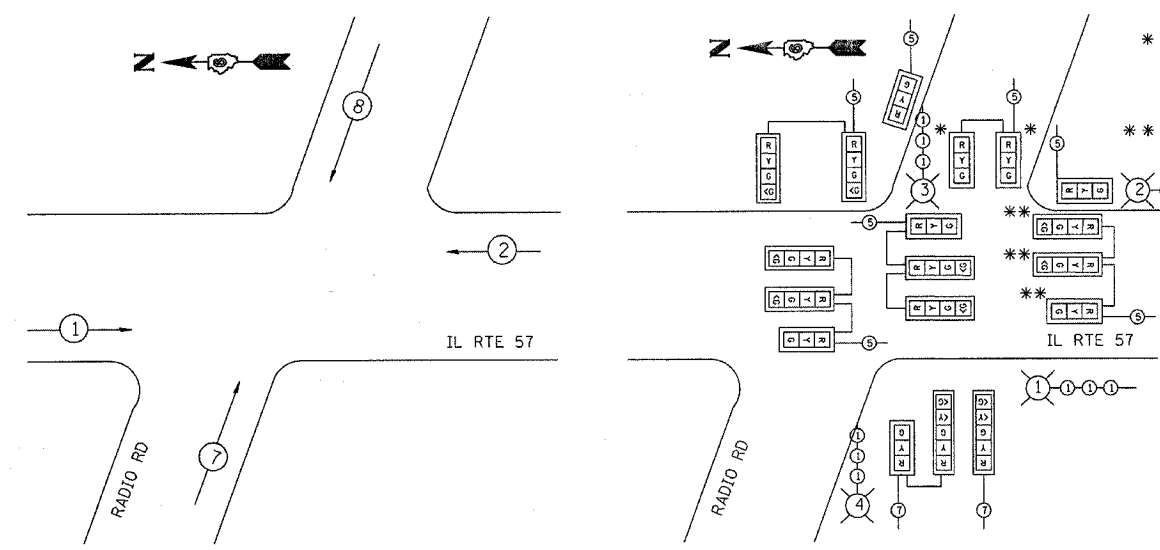


* TEMPORARY SIGNAL HEADS FOR PROPOSED WEST APPROACH SHALL NOT OPERATE DURING STAGES 1, 2 & 3 AND SHALL BE COVERED. SIGNAL HEAD WIRING SHALL BE LANDED TO PHASE 4 OF TEMPORARY TRAFFIC SIGNAL CONTROLLER CABINET.

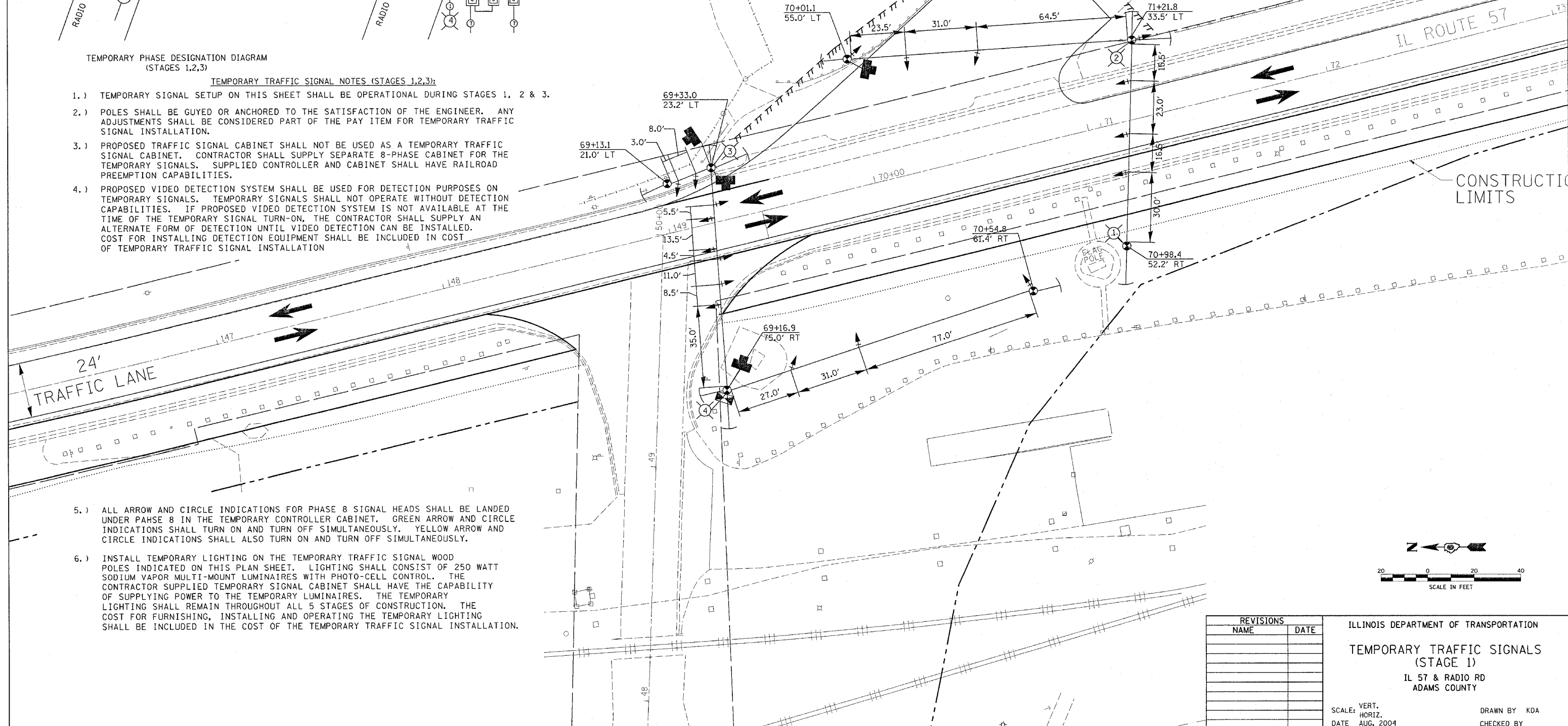
** TEMPORARY SIGNAL HEADS SHALL NOT OPERATE DURING STAGES 1, 2 & 3 AND SHALL BE COVERED. SIGNAL HEAD WIRING SHALL BE LANDED TO PHASE 1 OF TEMPORARY TRAFFIC SIGNAL CONTROLLER CABINET.



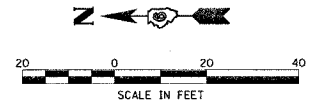
TEMPORARY PHASE DESIGNATION DIAGRAM (STAGES 1,2,3)

TEMPORARY TRAFFIC SIGNAL NOTES (STAGES 1,2,3):

- TEMPORARY SIGNAL SETUP ON THIS SHEET SHALL BE OPERATIONAL DURING STAGES 1, 2 & 3.
- POLES SHALL BE GUYED OR ANCHORED TO THE SATISFACTION OF THE ENGINEER. ANY ADJUSTMENTS SHALL BE CONSIDERED PART OF THE PAY ITEM FOR TEMPORARY TRAFFIC SIGNAL INSTALLATION.
- PROPOSED TRAFFIC SIGNAL CABINET SHALL NOT BE USED AS A TEMPORARY TRAFFIC SIGNAL CABINET. CONTRACTOR SHALL SUPPLY SEPARATE 8-PHASE CABINET FOR THE TEMPORARY SIGNALS. SUPPLIED CONTROLLER AND CABINET SHALL HAVE RAILROAD PREEMPTION CAPABILITIES.
- PROPOSED VIDEO DETECTION SYSTEM SHALL BE USED FOR DETECTION PURPOSES ON TEMPORARY SIGNALS. TEMPORARY SIGNALS SHALL NOT OPERATE WITHOUT DETECTION CAPABILITIES. IF PROPOSED VIDEO DETECTION SYSTEM IS NOT AVAILABLE AT THE TIME OF THE TEMPORARY SIGNAL TURN-ON, THE CONTRACTOR SHALL SUPPLY AN ALTERNATE FORM OF DETECTION UNTIL VIDEO DETECTION CAN BE INSTALLED. COST FOR INSTALLING DETECTION EQUIPMENT SHALL BE INCLUDED IN COST OF TEMPORARY TRAFFIC SIGNAL INSTALLATION



- ALL ARROW AND CIRCLE INDICATIONS FOR PHASE 8 SIGNAL HEADS SHALL BE LANDED UNDER PHASE 8 IN THE TEMPORARY CONTROLLER CABINET. GREEN ARROW AND CIRCLE INDICATIONS SHALL TURN ON AND TURN OFF SIMULTANEOUSLY. YELLOW ARROW AND CIRCLE INDICATIONS SHALL ALSO TURN ON AND TURN OFF SIMULTANEOUSLY.
- INSTALL TEMPORARY LIGHTING ON THE TEMPORARY TRAFFIC SIGNAL WOOD POLES INDICATED ON THIS PLAN SHEET. LIGHTING SHALL CONSIST OF 250 WATT SODIUM VAPOR MULTI-MOUNT LUMINAIRES WITH PHOTO-CELL CONTROL. THE CONTRACTOR SUPPLIED TEMPORARY SIGNAL CABINET SHALL HAVE THE CAPABILITY OF SUPPLYING POWER TO THE TEMPORARY LUMINAIRES. THE TEMPORARY LIGHTING SHALL REMAIN THROUGHOUT ALL 5 STAGES OF CONSTRUCTION. THE COST FOR FURNISHING, INSTALLING AND OPERATING THE TEMPORARY LIGHTING SHALL BE INCLUDED IN THE COST OF THE TEMPORARY TRAFFIC SIGNAL INSTALLATION.



REVISIONS	
NAME	DATE

ILLINOIS DEPARTMENT OF TRANSPORTATION
TEMPORARY TRAFFIC SIGNALS
 (STAGE 1)
 IL 57 & RADIO RD
 ADAMS COUNTY

SCALE: VERT. _____
 HORIZ. _____
 DATE AUG. 2004

DRAWN BY KDA
 CHECKED BY _____