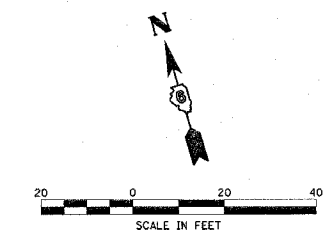


F.A.P. RTE.	SECTION	COUNTY	TOTAL SHEETS	SHEET NO.
502		ADAMS	315	66

STA. TO STA.
FED. ROAD DIST. NO. ILLINOIS FED. AID PROJECT

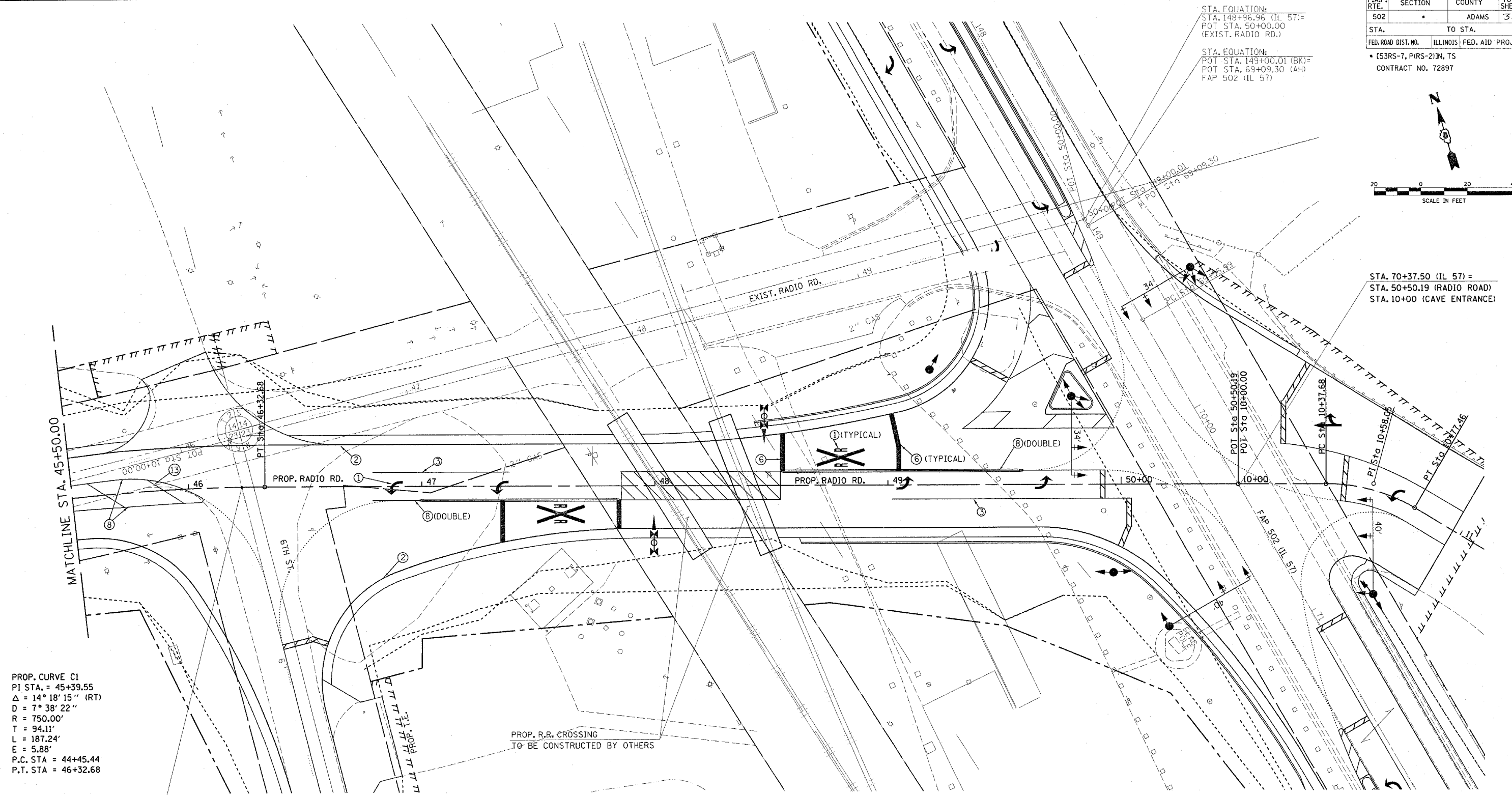
• (53RS-7, P(RS-2)JN, TS
CONTRACT NO. 72897



STA. EQUATION:
STA. 148+96.96 (IL 57)=
POT STA. 50+00.00
(EXIST. RADIO RD.)

STA. EQUATION:
POT STA. 149+00.01 (BK)=
POT STA. 69+09.30 (AH)
FAP 502 (IL 57)

STA. 70+37.50 (IL 57) =
STA. 50+50.19 (RADIO ROAD)
STA. 10+00 (CAVE ENTRANCE)



PROP. CURVE C1
PI STA. = 45+39.55
 $\Delta = 14^\circ 18' 15''$ (RT)
D = 7° 38' 22"
R = 750.00'
T = 94.11'
L = 187.24'
E = 5.88'
P.C. STA = 44+45.44
P.T. STA = 46+32.68

STA. 46+22.88 (PR. RADIO ROAD)=
STA. 9+79.10 (6TH ST. (EXIST.))

PROP. R.R. CROSSING
TO BE CONSTRUCTED BY OTHERS

- | | |
|--|--|
| ① POLYUREA PAVEMENT MARKING SPECIAL - LETTERS AND SYMBOLS | ⑦ POLYUREA PAVEMENT MARKING SPECIAL - LINE 5" SKIP DASH YELLOW |
| ② POLYUREA PAVEMENT MARKING SPECIAL - LINE 5" SOLID WHITE | ⑧ POLYUREA PAVEMENT MARKING SPECIAL - LINE 5" SOLID YELLOW |
| ③ POLYUREA PAVEMENT MARKING SPECIAL - LINE 6" SOLID WHITE | ⑨ POLYUREA PAVEMENT MARKING SPECIAL - LINE 6" SOLID YELLOW |
| ④ POLYUREA PAVEMENT MARKING SPECIAL - LINE 8" SOLID WHITE | ⑩ POLYUREA PAVEMENT MARKING SPECIAL - LINE 8" SOLID YELLOW |
| ⑤ POLYUREA PAVEMENT MARKING SPECIAL - LINE 12" SOLID WHITE | ⑪ RAISED REFELCTIVE PAVEMENT MARKERS - 1 WAY - AMBER |
| ⑥ POLYUREA PAVEMENT MARKING SPECIAL - LINE 24" SOLID WHITE | ⑫ RAISED REFLECTIVE PAVEMENT MARKERS - 2 WAY - AMBER |

REVISIONS	
NAME	DATE

ILLINOIS DEPARTMENT OF TRANSPORTATION
PAVEMENT MARKING DETAILS
FAP 502 (IL 57) & RADIO ROAD
SEC. (53RS-7, P(RS-2)JN, TS
ADAMS COUNTY
QUINCY, IL.
SCALE: VERT. _____
HORIZ. _____
DATE 08-02-04
DRAWN BY TMJ
CHECKED BY MEB

c:\projects\d653004\pavemark.dgn
2/3/2005
*REF 01