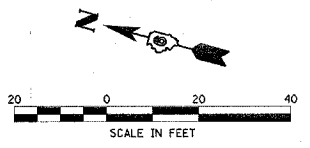


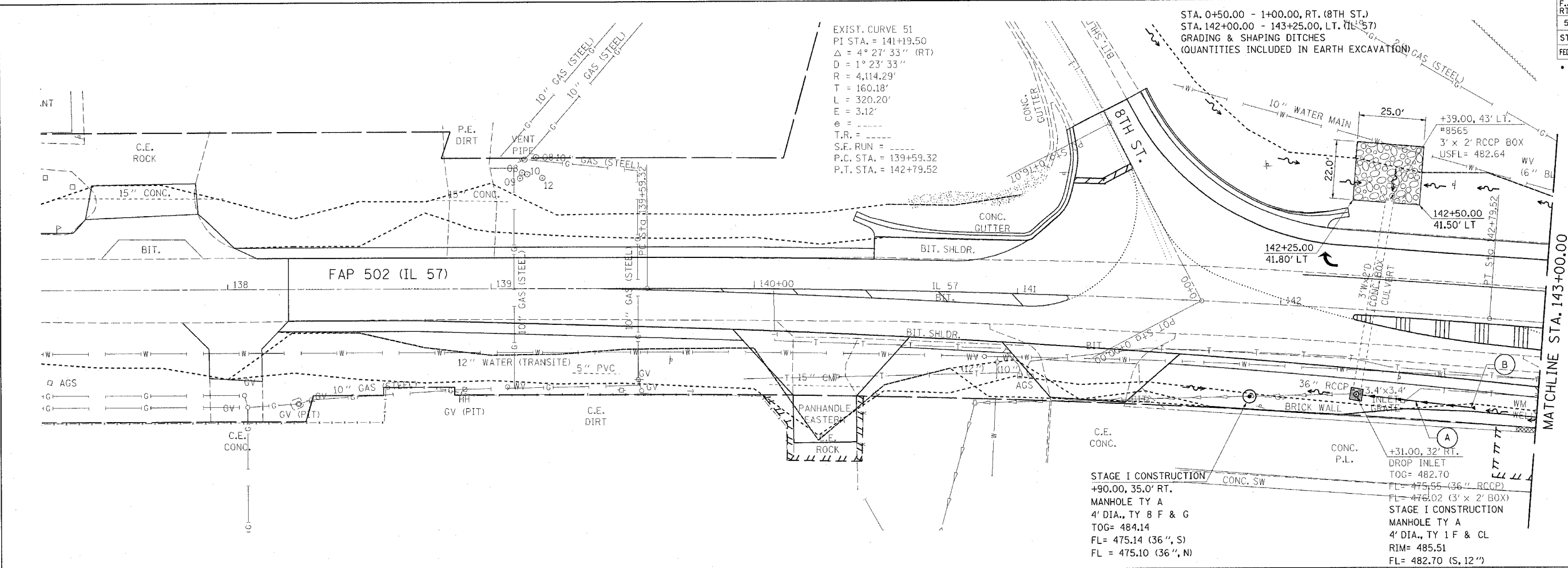
F.A.P. RTE.	SECTION	COUNTY	TOTAL SHEETS	SHEET NO.
502		ADAMS	315	43
STA. TO STA.		FED. ROAD DIST. NO. ILLINOIS FED. AID PROJECT		
		• 153RS-7, P1RS-2)N, TS		
		CONTRACT NO. 72897		



DATE	BY	REVISION

DATE	BY	REVISION

c:\projects\653004\653004.dwg.dgn
2/3/2005
*REF 01



EXIST. CURVE 51
PI STA. = 141+19.50
 $\Delta = 4^\circ 27' 33''$ (RT)
 $D = 1^\circ 23' 33''$
 $R = 4,114.29'$
 $L = 160.18'$
 $T = 320.20'$
 $E = 3.12'$
 $e =$
 $T.R. =$
 $S.E. RUN =$
P.C. STA. = 139+59.32
P.T. STA. = 142+79.52

STAGE I CONSTRUCTION
+90.00, 35.0' RT.
MANHOLE TY A
4' DIA., TY B F & G
TOG= 484.14
FL= 475.14 (36", S)
FL = 475.10 (36", N)

+31.00, 32' RT.
DROP INLET
TOG= 482.70
FL= 475.55 (36" RCCP)
FL= 476.02 (3' x 2' BOX)
STAGE I CONSTRUCTION
MANHOLE TY A
4' DIA., TY 1 F & CL
RIM= 485.51
FL= 482.70 (S, 12")

- (A) STAGE I CONSTRUCTION
45 L.F. TY 1, CL A
S.S. 12" @ -4.32%
- (B) +75.00, 34.0' RT.
RCCP FLARED END
SECTION 12"
FL= 484.46

