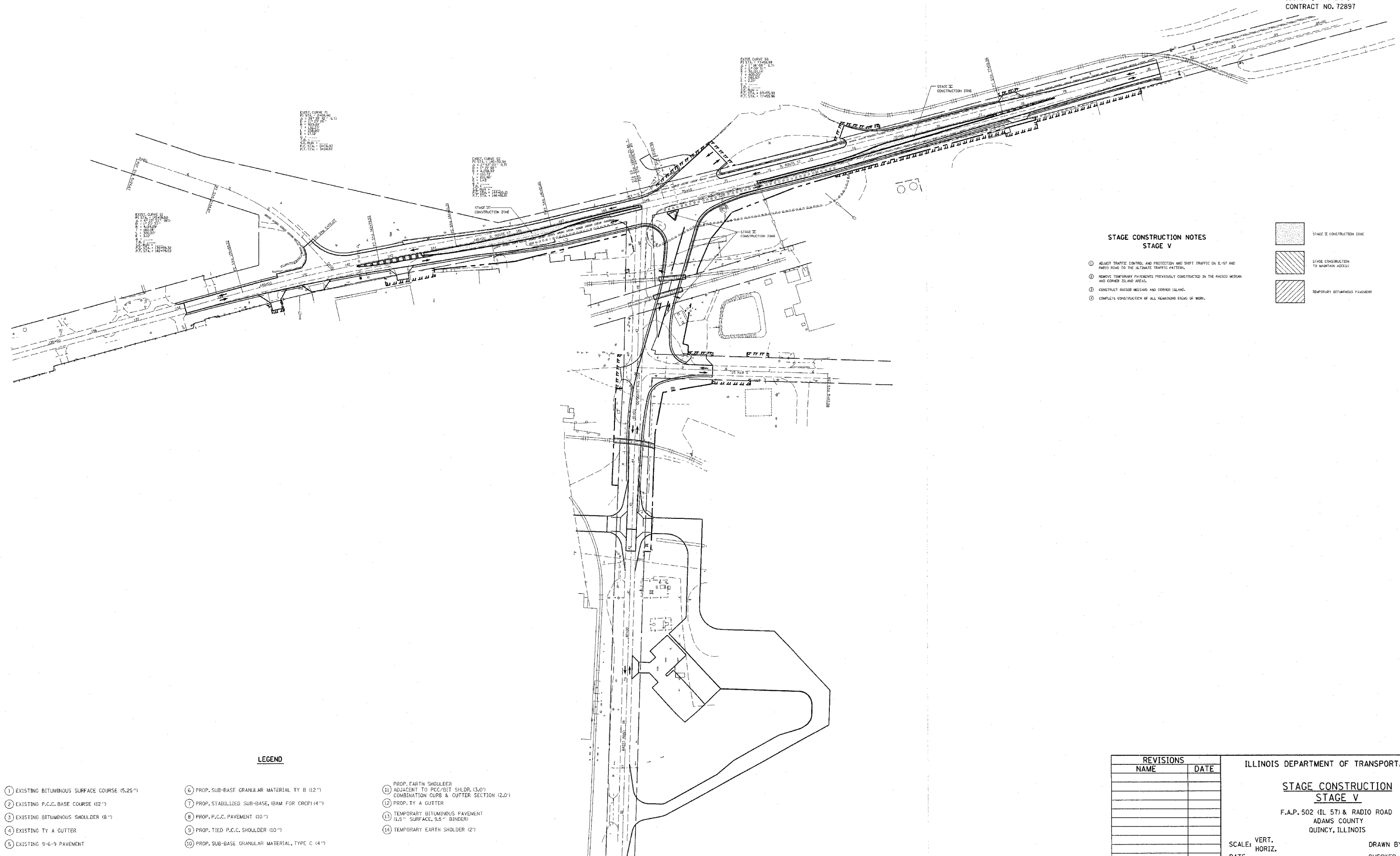


F.A.P. RTE.	SECTION	COUNTY	TOTAL SHEETS	SHEET NO.
502		ADAMS	315	31

STA. TO STA.
FED. ROAD DIST. NO. ILLINOIS FED. AID PROJECT

• (53RS-7, PIRS-2)JN, TS
CONTRACT NO. 72897



**STAGE CONSTRUCTION NOTES
STAGE V**

- ① ADJUST TRAFFIC CONTROL AND PROTECTION AND SHIFT TRAFFIC ON IL-57 AND RADIO ROAD TO THE ULTIMATE TRAFFIC PATTERN.
- ② REMOVE TEMPORARY PAVEMENTS PREVIOUSLY CONSTRUCTED IN THE RAISED MESSIAN AND CORNER ISLAND AREAS.
- ③ CONSTRUCT RAISED MESSIAN AND CORNER ISLAND.
- ④ COMPLETE CONSTRUCTION OF ALL REMAINING ITEMS OF WORK.

	STAGE II CONSTRUCTION ZONE
	STAGE CONSTRUCTION TO MAINTAIN ACCESS
	TEMPORARY BITUMINOUS PAVEMENT

LEGEND

- | | | |
|--|--|---|
| ① EXISTING BITUMINOUS SURFACE COURSE (5.25") | ⑥ PROP. SUB-BASE GRANULAR MATERIAL TY B (12") | ⑪ PROP. EARTH SHOULDER ADJACENT TO PCC/BIT SHLDR. (3.0') COMBINATION CURB & GUTTER SECTION (2.0') |
| ② EXISTING P.C.C. BASE COURSE (12") | ⑦ PROP. STABILIZED SUB-BASE, (BAM FOR CRCP) (4") | ⑫ PROP. TY A GUTTER |
| ③ EXISTING BITUMINOUS SHOULDER (8") | ⑧ PROP. P.C.C. PAVEMENT (10") | ⑬ TEMPORARY BITUMINOUS PAVEMENT (1.5" SURFACE, 5.5" BINDER) |
| ④ EXISTING TY A GUTTER | ⑨ PROP. TIED P.C.C. SHOULDER (10") | ⑭ TEMPORARY EARTH SHOULDER (2') |
| ⑤ EXISTING 9-6-9 PAVEMENT | ⑩ PROP. SUB-BASE GRANULAR MATERIAL, TYPE C (4") | |

REVISIONS	
NAME	DATE

ILLINOIS DEPARTMENT OF TRANSPORTATION
**STAGE CONSTRUCTION
STAGE V**
F.A.P. 502 (IL 57) & RADIO ROAD
ADAMS COUNTY
QUINCY, ILLINOIS

SCALE: VERT. _____
HORIZ. _____
DATE _____

DRAWN BY _____
CHECKED BY _____

c:\projects\d653004\woolpert_080204\radio rd stage 5.dgn
2/2/2005
*REF01