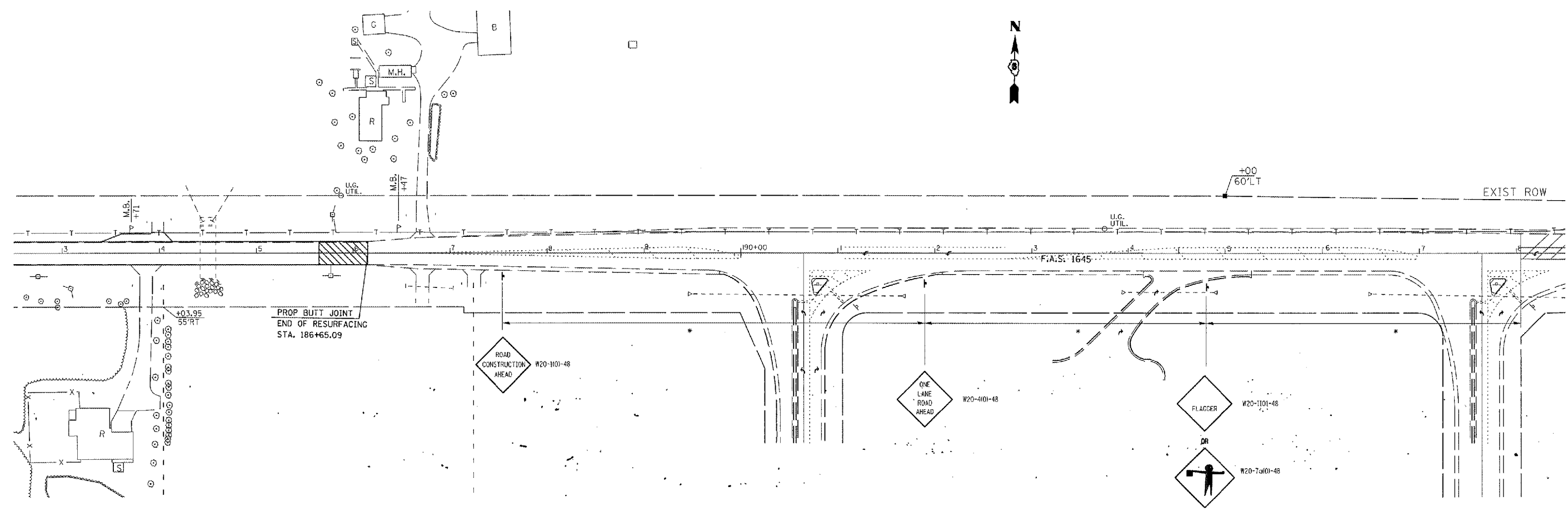


| | | | | |
|-----------------------|------------|----------|------------------|--------------|
| K.L. SHEET | SECTION | COUNTY | TOTAL SHEETS | SHEET NO. |
| 1645 | 150R,B,B-1 | SANGAMON | 28 | 21 |
| STA. | | TO STA. | | |
| FED. ROAD DIST. NO. 5 | | ILLINOIS | FED. AID PROJECT | |

72876



* PLACEMENT OF SIGN
TO BE DETERMINED BY
RESIDENT ENGINEER

ILLINOIS DEPARTMENT OF TRANSPORTATION

TRAFFIC CONTROL
F.A.S. ROUTE 1645
SECTION 150R
SANGAMON COUNTY

| REVISIONS | |
|-----------|---------|
| NAME | DATE |
| CAD | 4-10-89 |
| | |
| | |
| | |
| | |