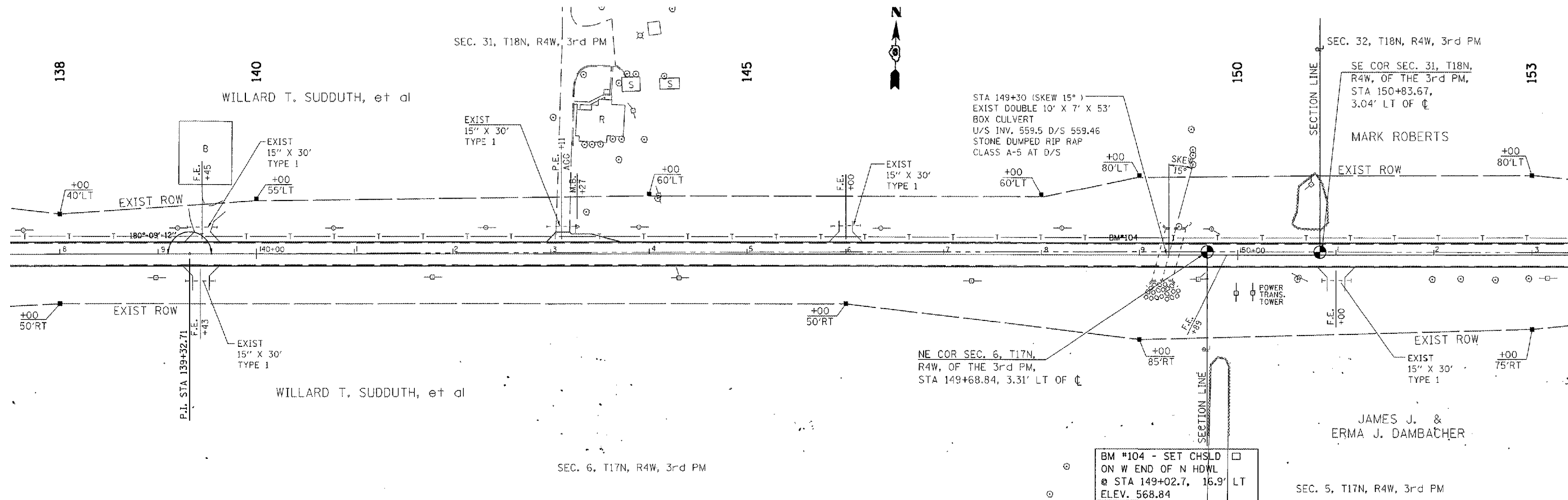


F.A.S. ETC.	SECTION	COUNTY	TOTAL SHEETS	SHEET NO.
1645	150RS	SANGAMON	28	15
STA. 138+00		TO STA. 153+00		
FED. ROAD DIST. NO. 1		ILLINOIS	FED. AID PROJECT	

CONTRACT NO. 72876

PLAN	DATE
DESIGNED BY	
CHECKED BY	
DATE	
NOTE BOOK NO.	
FIELD FILE NAME	

PROFILE	DATE
DESIGNED BY	
CHECKED BY	
DATE	
NOTE BOOK NO.	
FIELD FILE NAME	



BM #104 - SET CHSLD ON W END OF N HDWL @ STA 149+02.7, 16.9' LT ELEV. 568.84

ILLINOIS DEPARTMENT OF TRANSPORTATION

F.A.S. ROUTE 1645
SECTION 150RS
SANGAMON COUNTY