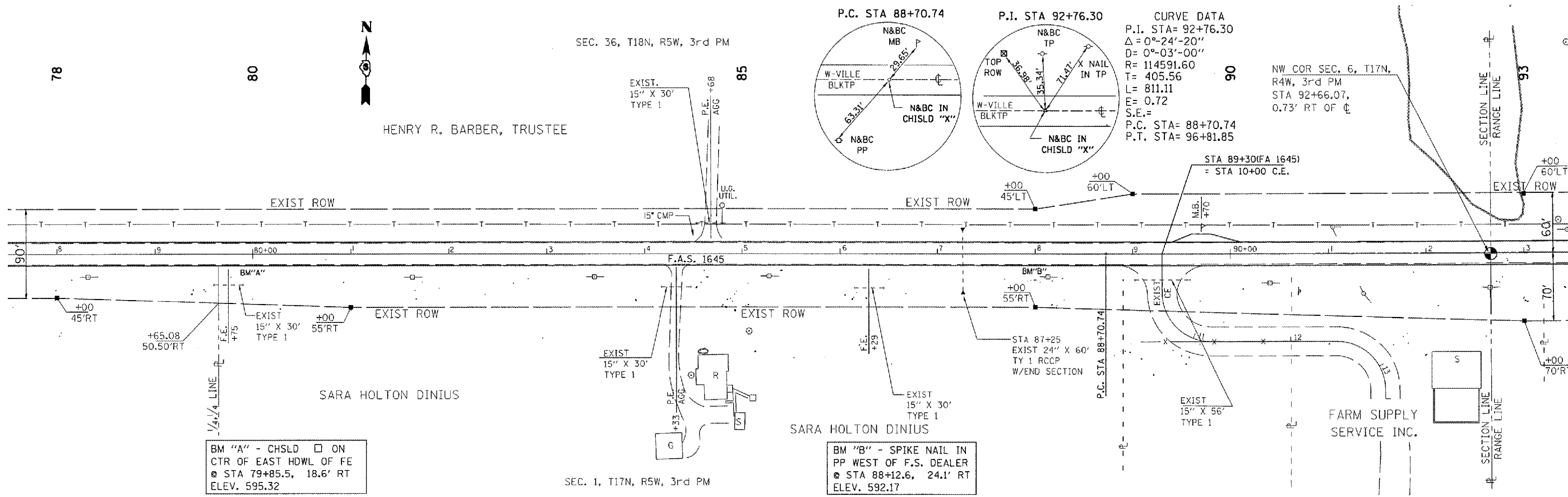


P.A. NO.	SECTION	COUNTY	TOTAL SHEETS	SHEET NO.
1645	150RS	SANGAMON	28	11
STA. 78+00		TO STA. 93+00		
FED. ROAD DIST. NO. 1		ILLINOIS	FED. AID PROJECT	

CONTRACT NO. 72876

PLAN	DATE
BY	
CHECKED	
DATE	
NO.	

PROFILE	DATE
BY	
CHECKED	
DATE	
NO.	



BM "A" - CHSLD □ ON
CTR OF EAST HDWL OF FE
@ STA 79+85.5, 18.6' RT
ELEV. 595.32

BM "B" - SPIKE NAIL IN
PP WEST OF F.S. DEALER
@ STA 88+12.6, 24.1' RT
ELEV. 592.17

ILLINOIS DEPARTMENT OF TRANSPORTATION

F.A.S. ROUTE 1645
SECTION 150RS
SANGAMON COUNTY