

F. A.S. SHE.	SECTION	COUNTY	TOTAL SHEETS	SHEET NO.
1645	150RS	SANGAMON	28	9
STA. 63+00		TO STA. 63+00		
FED. ROAD DIST. NO. 1		ILLINOIS	FED. AID PROJECT	

CONTRACT NO. 72876

PLAN

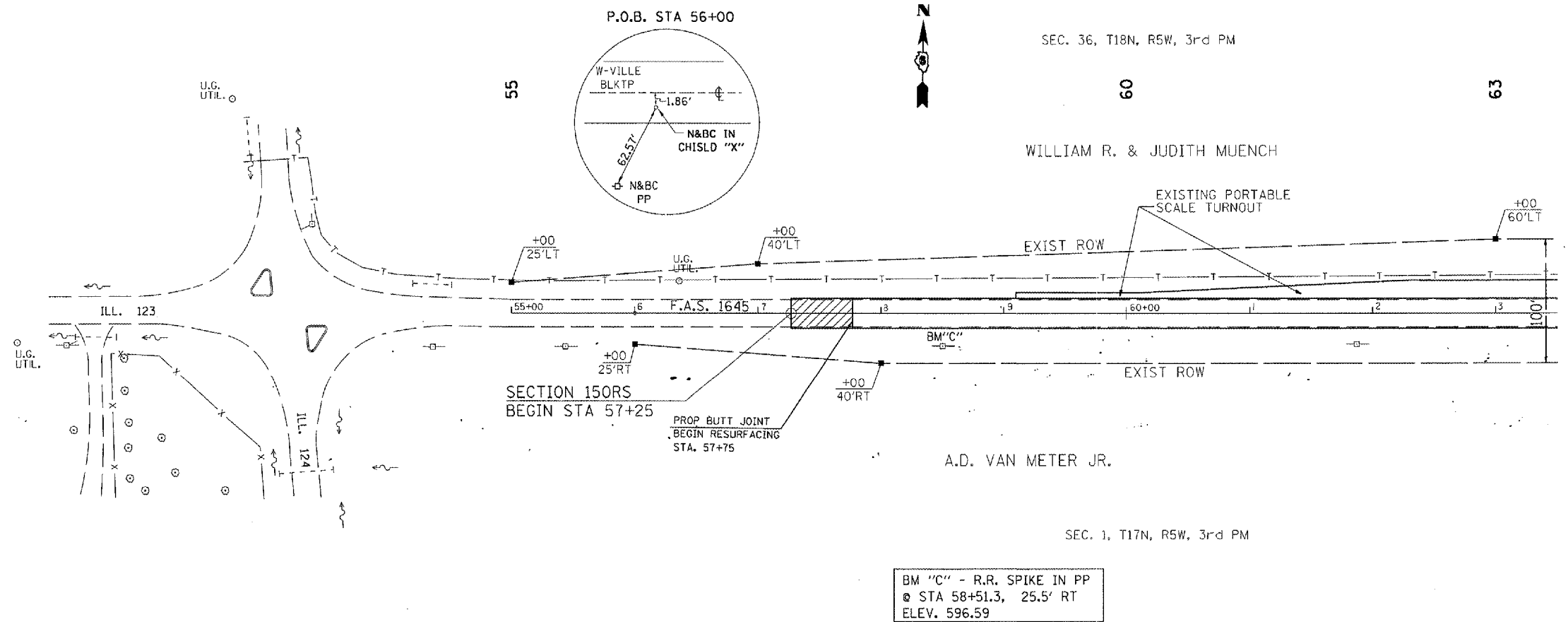
DATE	BY

REVISIONS
 PLANNED
 CHECKED
 DATE FILE NAME

PROFILE

DATE	BY

REVISIONS
 PLANNED
 CHECKED
 DATE FILE NAME



BM "C" - R.R. SPIKE IN PP
 @ STA 58+51.3, 25.5' RT
 ELEV. 596.59

ILLINOIS DEPARTMENT OF TRANSPORTATION

F.A.S. ROUTE 1645
 SECTION 150RS
 SANGAMON COUNTY